

HI-ILS or LOC Z RWY 16

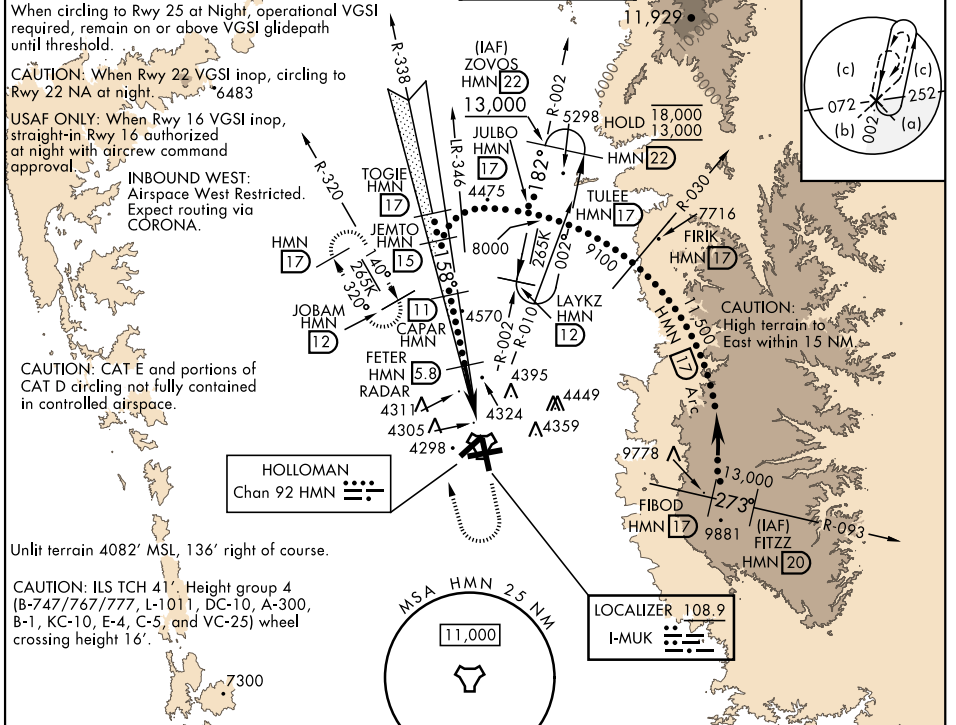
LOC I-MUK 108.9	APCH CRS 158°	Rwy ldg 12,134 TDZE 4083 Arprt Elev 4093
---------------------------	-------------------------	--

AL-7 [USAF]

HOLLOMAN AFB (KHMN)

RADAR or DME required.		ALSIF-1 	MISSED APPROACH: Climb straight ahead to 7000, passing 5000 turn right and intercept HMN R-320 outbound to JOBAM and hold.
<p>▼ *When ALS inop, increase CAT CDE vis to 3/4 mile. **When ALS inop, increase CAT CDE vis to 1 3/8 miles.</p>			

ATIS ★ 273.5	ALBUQUERQUE CENTER 132.65 257.6	APP CON 120.6 269.225	TOWER ★ 119.3 254.4	GND CON 127.05 275.8	CLNC DEL 126.7 289.4
------------------------	---	---------------------------------	-------------------------------	--------------------------------	--------------------------------



SW-1, 28 NOV 2024 to 26 DEC 2024

SW-1, 28 NOV 2024 to 26 DEC 2024

ELEV 4093	TDZE 4083		
EMERG SAFE ALT 100 NM 14,200			
VGSI and ILS glidepath not coincident (VGSI angle 3.00/TCH 50).			
CATEGORY	C	D	E
S-ILS 16 *	4283-1/2	200	(200-1/2)
S-LOC 16**	4600-1	517	(600-1)
CIRCLING	4680-1 1/2 587 (600-1 1/2)	4740-2 647 (700-2)	4780-2 1/2 687 (700-2 1/2)
	HIRL all rwys REIL Rwy 22		
FAF to MAP 5.0 NM			
Knots	120	140	160 180 200
Min:Sec	2:30	2:09	1:53 1:40 1:30

HI-ILS or LOC Z RWY 16