

HI-TACAN RWY 16

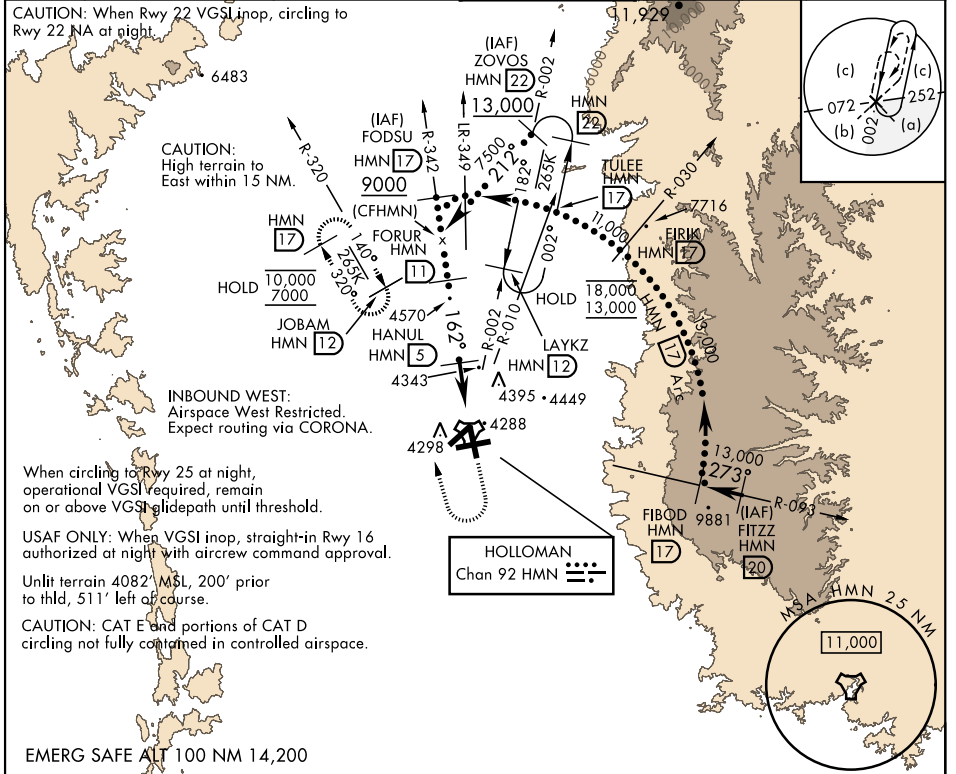
TACAN HMN Chan 92	APCH CRS 162°	Rwy ldg 12,134 TDZE 4083 Arprt Elev 4093	AL-7 [USAF]	HOLLOMAN AFB (KHMN)
-----------------------------	-------------------------	---	-------------	---------------------

▼ * When ALS inop, increase CAT CDE vis to 1½ miles.
When VGSi inop, procedure NA at night.

ALS-F-1 

MISSED APPROACH: Climb straight ahead to 7000, passing 5000 turn right and intercept HMN R-320 outbound to JOBAM and hold.

ATIS * 273.5	ALBUQUERQUE CENTER 132.65 257.6	APP CON 120.6 269.225	TOWER * 119.3 254.4	GND CON 127.05 275.8	CLNC DEL 126.7 289.4
------------------------	---	---------------------------------	-------------------------------	--------------------------------	--------------------------------



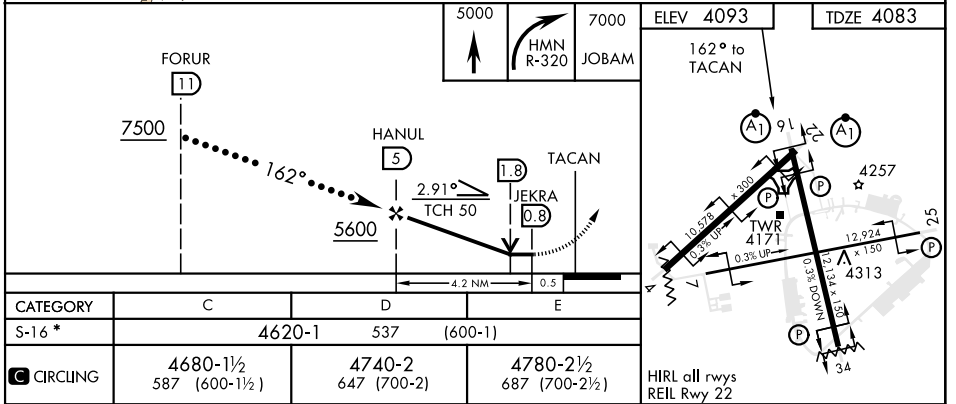
When circling to Rwy 25 at night, operational VGSi required, remain on or above VGSi glidepath until threshold.


USAF ONLY: When VGSi inop, straight-in Rwy 16 authorized at night with aircrew command approval.

Unlit terrain 4082' MSL, 200' prior to thld, 511' left of course.

CAUTION: CAT E and portions of CAT D circling not fully contained in controlled airspace.

EMERG SAFE ALT 100 NM 14,200



CATEGORY	C	D	E
S-16 *	4620-1	537 (600-1)	
 CIRCLING	4680-1½ 587 (600-1½)	4740-2 647 (700-2)	4780-2½ 687 (700-2½)

HI-TACAN RWY 16

SW-1, 28 NOV 2024 to 26 DEC 2024

SW-1, 28 NOV 2024 to 26 DEC 2024