

# HI-TACAN RWY 34

TACAN HMN Chan 92	APCH CRS 334°	Rwy ldg 12,134 TDZE 4058 Arpt Elev 4093
----------------------	------------------	-----------------------------------------------

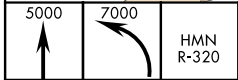
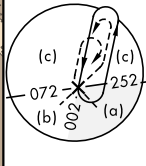
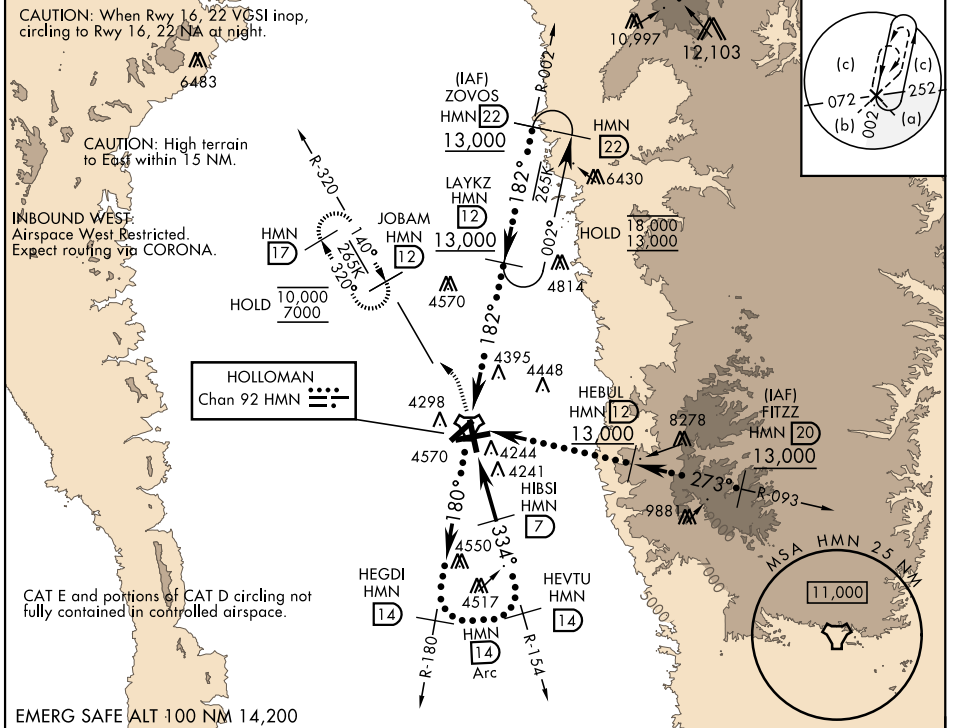
AL-7 [USAF]

HOLLOMAN AFB (KHMN)

When circling to Rwy 25 at night, operational VGSI required, remain on or above VGSI glidepath until threshold.

MISSÉ APPROACH: Climb straight ahead to 7000, passing 5000 turn left to intercept HMN TACAN R-320 to JOBAM and hold.

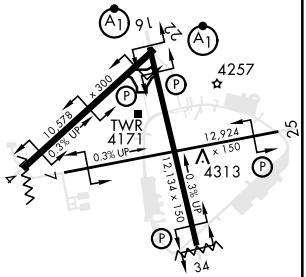
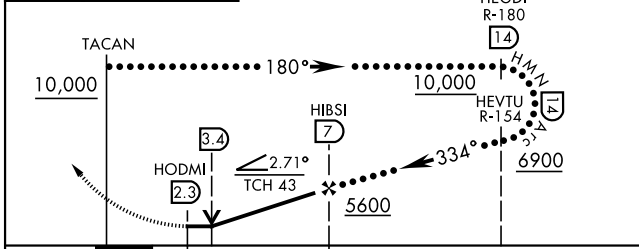
ATIS ★ 273.5	ALBUQUERQUE CENTER 132.65 257.6	APP CON 120.6 269.225	TOWER ★ 119.3 254.4	GND CON 127.05 275.8	CLNC DEL 126.7 289.4
-----------------	------------------------------------	--------------------------	------------------------	-------------------------	-------------------------



VGSI and descent angles not coincident (VGSI Angle 2.50/TCH 43).

ELEV 4093

TDZE 4058



CATEGORY	A	B	C	D	E
S-34	4540-1	482 (500-1)	4540-1 <sup>3</sup> / <sub>8</sub>	482 (500-1 <sup>3</sup> / <sub>8</sub> )	
<b>C</b> CIRCLING	4640-1	547 (600-1)	4680-1 <sup>1</sup> / <sub>2</sub> 587 (600-1 <sup>1</sup> / <sub>2</sub> )	4740-2 647 (700-2)	4780-2 <sup>1</sup> / <sub>2</sub> 687 (700-2 <sup>1</sup> / <sub>2</sub> )

HIRL all rwys  
REIL Rwy 22

334° to TACAN

# HI-TACAN RWY 34

SW-1, 28 NOV 2024 to 26 DEC 2024

SW-1, 28 NOV 2024 to 26 DEC 2024