

IZZYY ONE DEPARTURE (RNAV) (IZZYY1•IZZYY)

HOLLOMAN AFB (KHMN)

ALAMOGORDO, NEW MEXICO

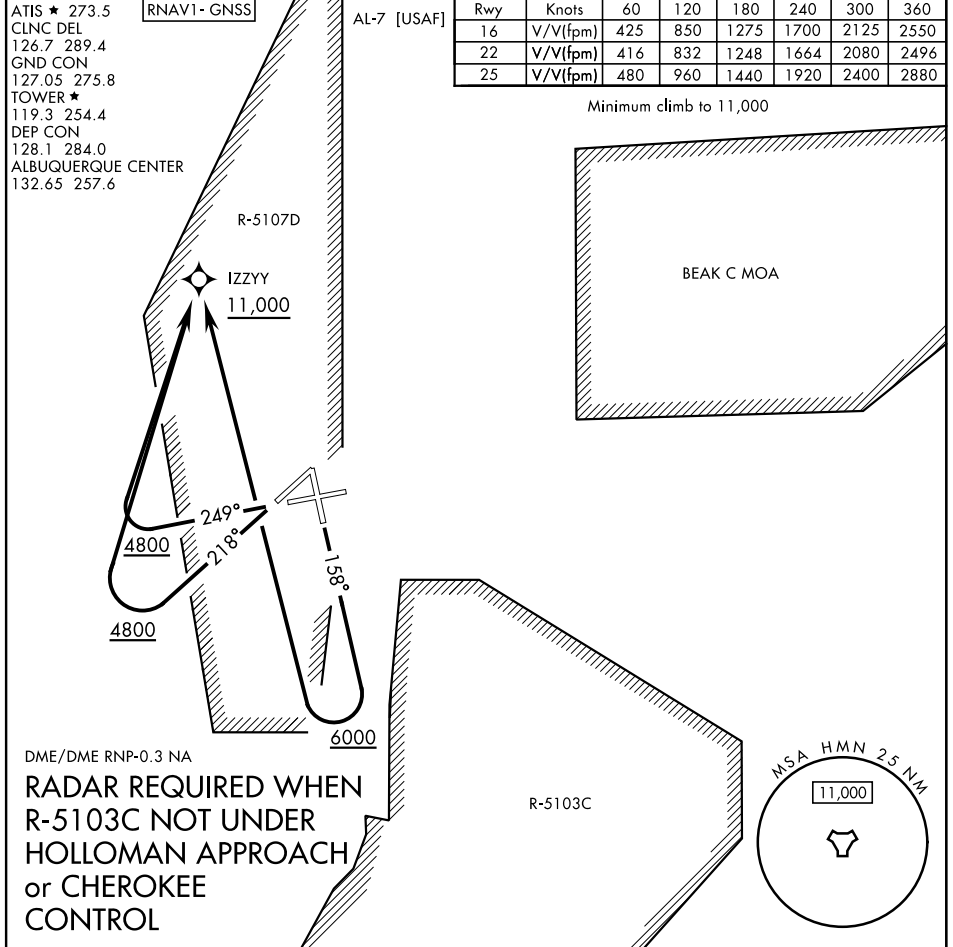
ATIS ★ 273.5
 CLNC DEL 126.7 289.4
 GND CON 127.05 275.8
 TOWER ★ 119.3 254.4
 DEP CON 128.1 284.0
 ALBUQUERQUE CENTER 132.65 257.6

RNAV1-GNSS

AL-7 [USAF]

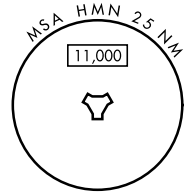
Rwy	Knots	60	120	180	240	300	360
16	V/V(fpm)	425	850	1275	1700	2125	2550
22	V/V(fpm)	416	832	1248	1664	2080	2496
25	V/V(fpm)	480	960	1440	1920	2400	2880

Minimum climb to 11,000



DME/DME RNP-0.3 NA

RADAR REQUIRED WHEN R-5103C NOT UNDER HOLLOMAN APPROACH or CHEROKEE CONTROL



DEPARTURE ROUTE DESCRIPTION

TAKEOFF RWY 16: Climb on track 158° when leaving 6000 turn right direct IZZYY, then via assigned routing. Cross IZZYY at or above 11,000.

TAKEOFF RWY 22: Climb on track 218° when leaving 4800 turn right direct IZZYY, then via assigned routing. Cross IZZYY at or above 11,000.

TAKEOFF RWY 25: Climb on track 249° when leaving 4800 turn right direct IZZYY, then via assigned routing. Cross IZZYY at or above 11,000.

IZZYY ONE DEPARTURE (RNAV) (IZZYY1•IZZYY)

Amdt1 10AUG23

ALAMOGORDO, NEW MEXICO

HOLLOMAN AFB (KHMN)

SW-1, 28 NOV 2024 to 26 DEC 2024

SW-1, 28 NOV 2024 to 26 DEC 2024