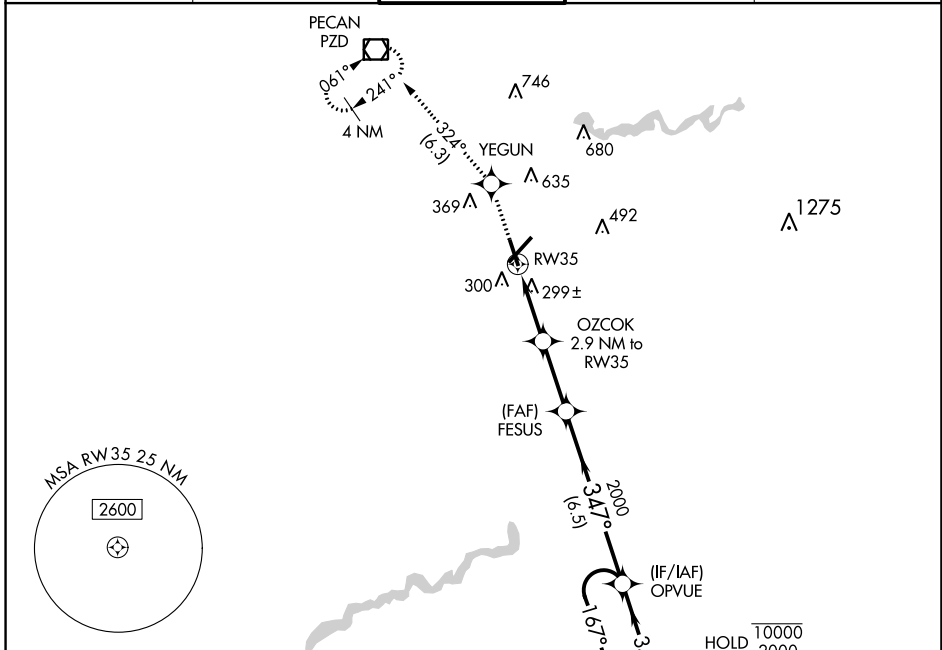


WAAS CH 97415 W35A	APP CRS 347°	Rwy Idg 5219 TDZE 196 Apt Elev 196
--	------------------------	---

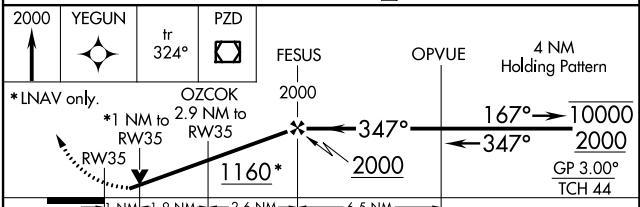
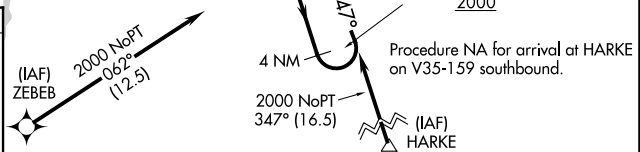
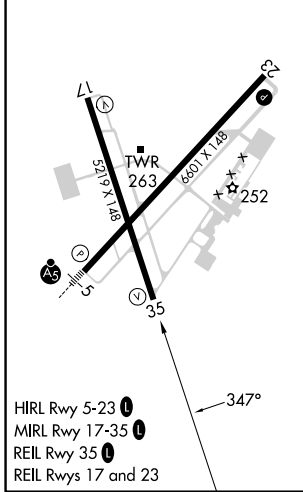
RNAV (GPS) RWY 35

SOUTHWEST GEORGIA RGNL (ABY)

RNP APCH.		MISSED APPROACH: Climb to 2000 direct YEGUN and on track 324° to PZD VOR/DME and hold.	
▼ For uncompensated Baro-VNAV systems, LNAV/VNAV NA below -7°C or above 54°C. Rwy 35 helicopter visibility reduction below 3/4 SM NA.			
ATIS 133.05	JACKSONVILLE CENTER 125.75 363.075	ALBANY TOWER * 120.25 (CTAF) 0336.4	GND CON 121.9 348.6
		UNICOM 122.95	



ELEV 196	D TDZE 196
----------	-------------------



2000	YEGUN	tr 324°	PZD	FESUS	OPVUE	4 NM Holding Pattern
*LNAV only.		OZCOK 2.9 NM to RW35		*1 NM to RW35		
RW35		1160*		2000		
1 NM		1.9 NM		2.6 NM		6.5 NM
CATEGORY	A	B	C	D		
LPV DA	495-1 299 (300-1)					
LNAV/VNAV DA	475-1 279 (300-1)					
LNAV MDA	560-1 364 (400-1)					
C CIRCLING	640-1 444 (500-1)	660-1 464 (500-1)	940-2 1/4 744 (800-2 1/4)	940-2 1/2 744 (800-2 1/2)		

SE-4, 28 NOV 2024 to 26 DEC 2024

SE-4, 28 NOV 2024 to 26 DEC 2024