

WAAS CH 56302 W19A	APP CRS 191°	Rwy Idg 8500 TDZE 280 Apt Elev 285
--	------------------------	---

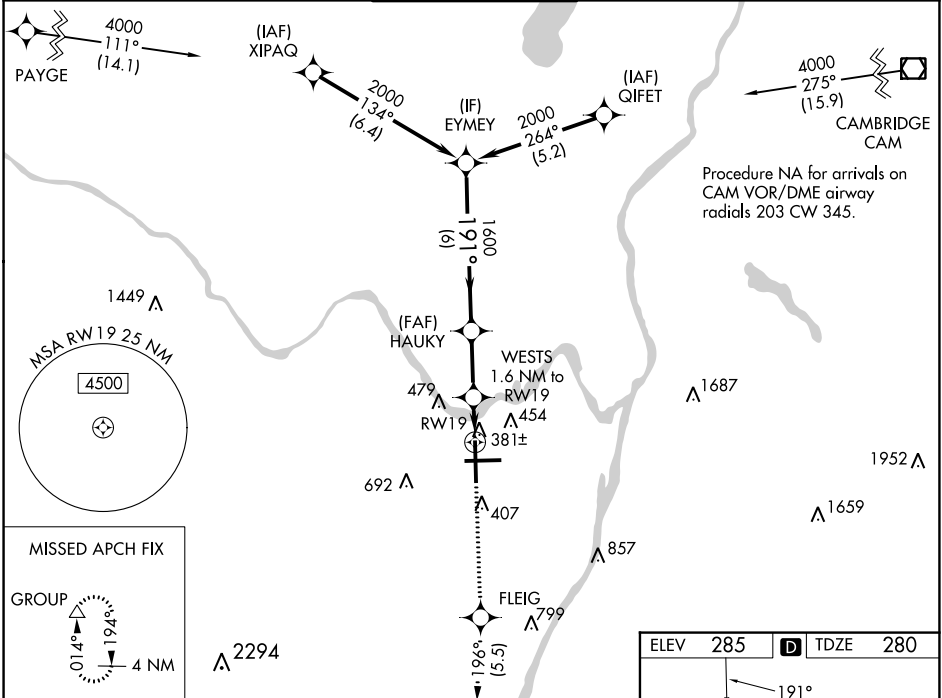
RNAV (GPS) Y RWY 19

ALBANY INTL (ALB)

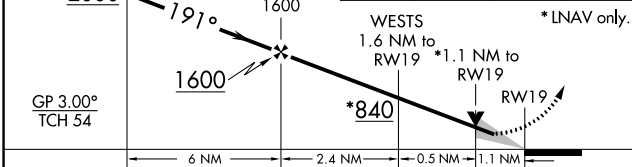
⚠ For uncompensated Baro-VNAV systems, LNAV/VNAV NA below -5°C (23°F) or above 54°C (130°F). For inop ALS, increase LNAV/VNAV all Cats visibility to RVR 4500. Circling NA west of Rwy 1-19. Circling Rwy 10 NA at night. DME/DME RNP-0.3 NA.

MALSR MISSED APPROACH: Climb to 3000 direct FLEIG and on track 196° to GROUP and hold.

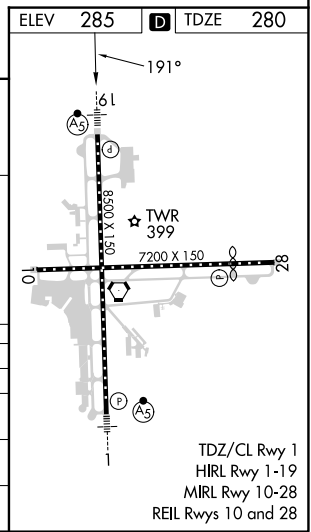
D-ATIS 120.45	ALBANY APP CON 132.825 307.2	ALBANY TOWER 119.5 257.8	GND CON 121.7 348.6	CLNC DEL 127.50
-------------------------	--	------------------------------------	-------------------------------	---------------------------



EYMEY	HAUKY	3000	FLEIG	tr 196°	GROUP
-------	-------	------	-------	---------	-------



CATEGORY	A	B	C	D
LPV DA	480/18 200 (200-½)			
LNAV/VNAV DA	590/24 310 (400-½)			
LNAV MDA	680/24 400 (400-½)	680/35 400 (400-⅝)		
C CIRCLING	820-1 535 (600-1)	860-1½ 575 (600-½)	960-2¼ 675 (700-2¼)	



NE-2, 28 NOV 2024 to 26 DEC 2024

NE-2, 28 NOV 2024 to 26 DEC 2024

TDZ/CL Rwy 1
HIRL Rwy 1-19
MIRL Rwy 10-28
REIL Rwy 10 and 28