

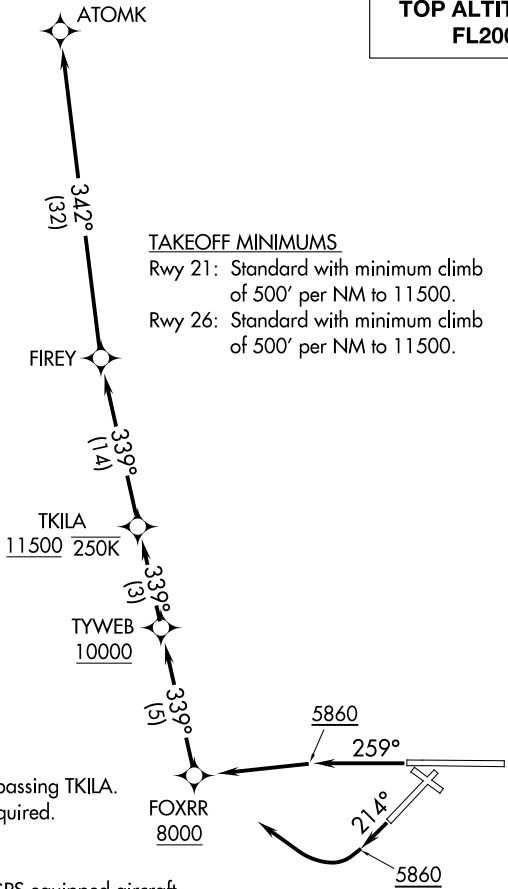
(ATOMK3.ATOMK) 21336

# ATOMK THREE DEPARTURE (RNAV) AL-12 (FAA)

ALBUQUERQUE INTL SUNPORT (ABQ)  
ALBUQUERQUE, NEW MEXICO

D-ATIS  
118.0 257.7  
CLNC DEL  
119.2 259.3  
CPDLC  
GND CON  
121.9 348.6  
ALBUQUERQUE TOWER  
120.3 351.9  
ALBUQUERQUE DEP CON  
127.4 253.5

**TOP ALTITUDE:  
FL200**



**TAKEOFF MINIMUMS**  
Rwy 21: Standard with minimum climb of 500' per NM to 11500.  
Rwy 26: Standard with minimum climb of 500' per NM to 11500.

- NOTE: Do not exceed 250K until passing TKILA.
- NOTE: DME/DME/IRU or GPS required.
- NOTE: For turbojet aircraft only.
- NOTE: RNAV 1.
- NOTE: RADAR required for non-GPS equipped aircraft.
- NOTE: If unable to accept climb gradient, advise ATC on initial contact.

NOTE: Chart not to scale.

SW-1, 28 NOV 2024 to 26 DEC 2024

SW-1, 28 NOV 2024 to 26 DEC 2024

**DEPARTURE ROUTE DESCRIPTION**

**TAKEOFF RUNWAY 21:** Climb heading 214° to 5860, then right turn direct FOXR, cross FOXR at or above 8000, then on track 339° to TYWEB, cross TYWEB at or above 10000, then on track 339° to TKILA, cross TKILA at or above 11500, then on depicted route to ATOMK, thence. . . .

**TAKEOFF RUNWAY 26:** Climb heading 259° to 5860, then direct FOXR, cross FOXR at or above 8000, then on track 339° to TYWEB, cross TYWEB at or above 10000, then on track 339° to TKILA, cross TKILA at or above 11500, then on depicted route to ATOMK, thence . . . .

. . . . Maintain FL200. Expect filed altitude 10 minutes after departure.

ATOMK THREE DEPARTURE (RNAV)  
(ATOMK3.ATOMK) 25JUN15

ALBUQUERQUE, NEW MEXICO  
ALBUQUERQUE INTL SUNPORT (ABQ)