

HI-TACAN RWY 8

VORTAC ABQ 113.2 Chan 79	APCH CRS 077	Rwy ldg 12,793	TDZE 5320
		Arprt Elev 5355	

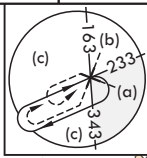
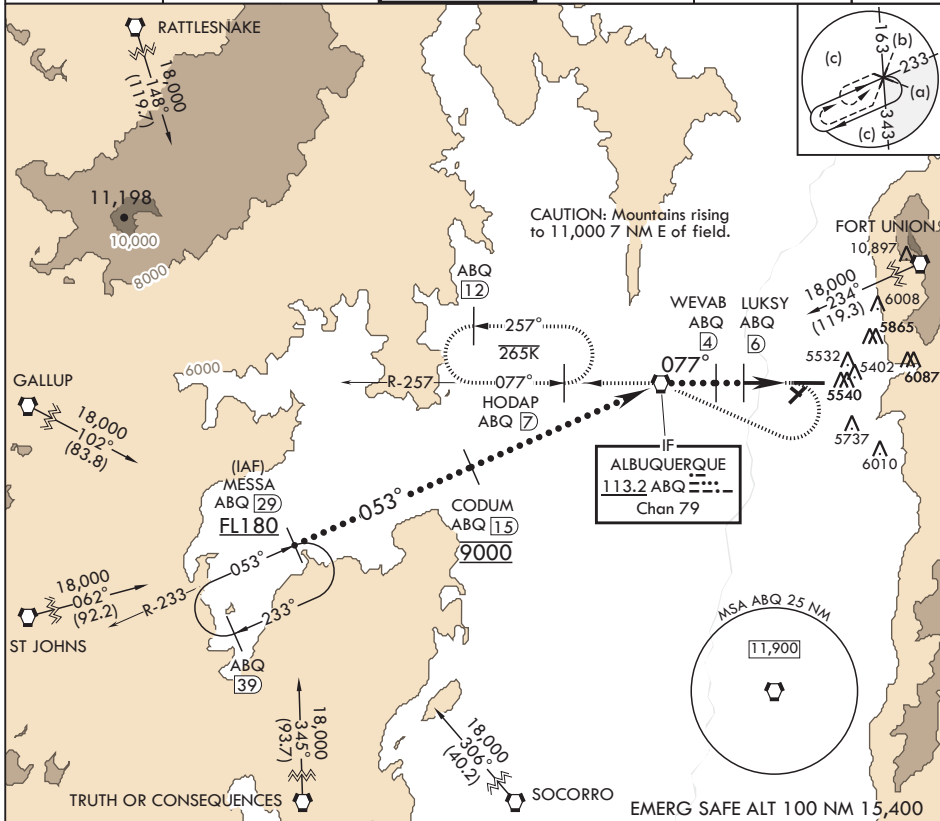
JAL-12 (USAF)

ALBUQUERQUE INTL SUNPORT (KABQ)

⚠ * When ALS inop, increase CAT CDE RVR to 55, vis to 1 1/8 miles.
 ** Circling NA for CAT E SE of Rwy 3-21 and NE of Rwy 12-30.
 When local altimeter is not received, procedure NA.

MALSR MISSED APPROACH: Climb to 5800 then climbing right turn to 8000 direct ABQ VORTAC R-257 to HODAP/ABQ 7 DME and hold.

D ATIS 118.0 257.7	APP CON/DEP CON 123.9 253.5	TOWER 120.3 351.9	GND CON 121.9 348.6	CLNC DEL 119.2 259.3	ASR
-----------------------	--------------------------------	----------------------	------------------------	-------------------------	-----



SW-1, 28 NOV 2024 to 26 DEC 2024

SW-1, 28 NOV 2024 to 26 DEC 2024

MESSA R-233 (29)	CODUM (15)	(IF) ABQ VORTAC	WEVAB (4)	LUKSY (6)	EYECO (9)	ELEV 5355	TDZE 5320
FL180	9000	8000	077	6800	6600	ABQ	Rwy 8 ldg 12,793'
3.08 > TCH 54							
CATEGORY	C	D	E				
S-8*	5700/35	380	(400-5/8)				
CIRCLING**	5920-1 1/2 565 (600-1 1/2)	6460-3	1105	(1200-3)	REIL Rws 21, 26, 30 HIRL Rws 3-21, 8-26 MIRL Rwy 12-30 TDZL/CL Rws 3, 8		

HI-TACAN RWY 8