

MNZNO THREE DEPARTURE (RNAV)
 (MNZNO3.MNZNO) 25JUN15

ALBUQUERQUE INTL SUNPORT (ABQ)
 (MNZNO3.MNZNO) 25JUN15

(MNZNO3.MNZNO) 21336
 MNZNO THREE DEPARTURE (RNAV)
 AL-12 (FAA)

ALBUQUERQUE INTL SUNPORT (ABQ)
 ALBUQUERQUE, NEW MEXICO

D-ATIS
 118.0 257.7
 CLNC DEL
 119.2 259.3
 CPDLC
 GND CON
 121.9 348.6
 ALBUQUERQUE TOWER
 120.3 351.9
 ALBUQUERQUE DEP CON
 123.9 354.1

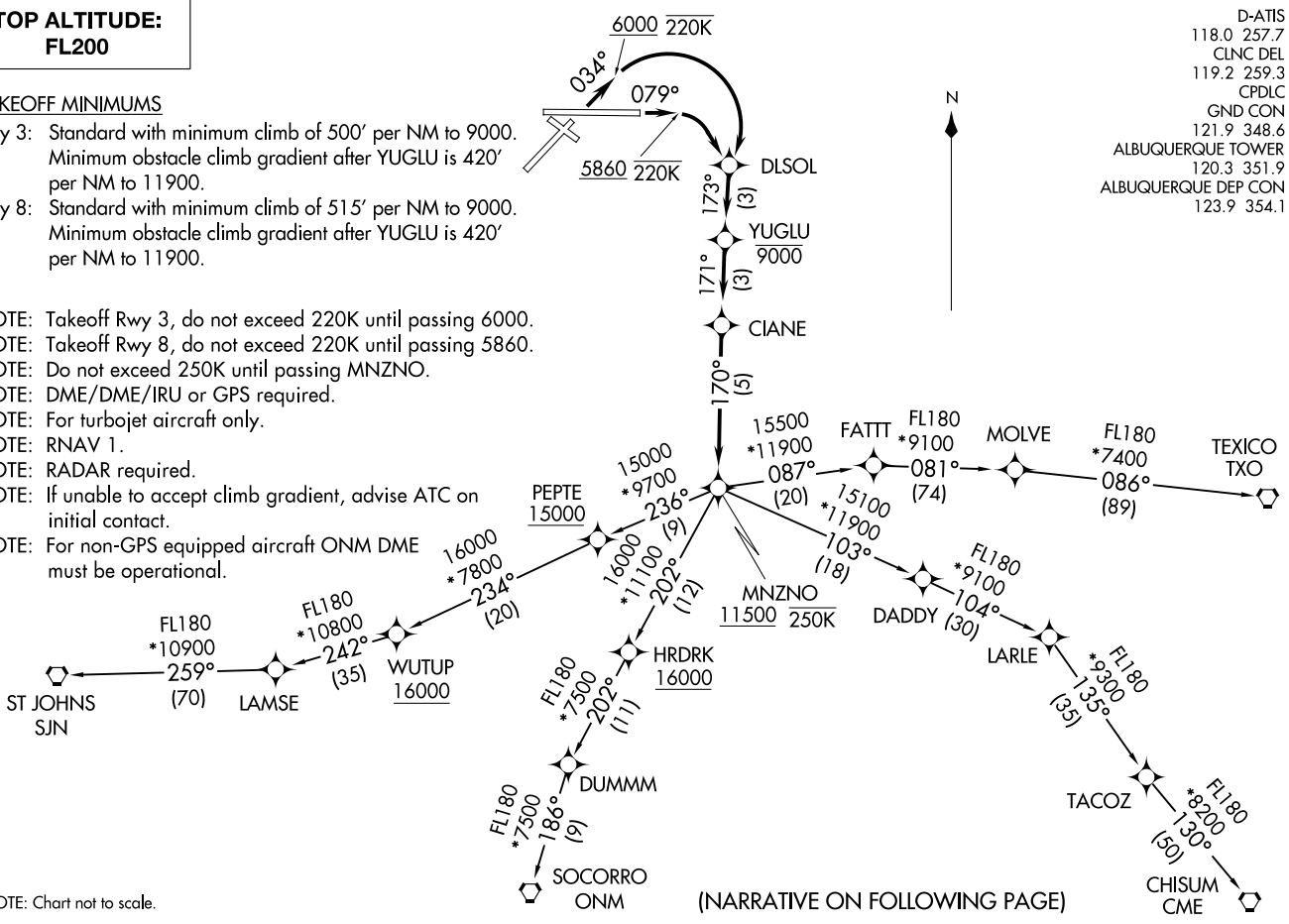
**TOP ALTITUDE:
FL200**

TAKEOFF MINIMUMS

- Rwy 3: Standard with minimum climb of 500' per NM to 9000. Minimum obstacle climb gradient after YUGLU is 420' per NM to 11900.
- Rwy 8: Standard with minimum climb of 515' per NM to 9000. Minimum obstacle climb gradient after YUGLU is 420' per NM to 11900.

- NOTE: Takeoff Rwy 3, do not exceed 220K until passing 6000.
- NOTE: Takeoff Rwy 8, do not exceed 220K until passing 5860.
- NOTE: Do not exceed 250K until passing MNZNO.
- NOTE: DME/DME/IRU or GPS required.
- NOTE: For turbojet aircraft only.
- NOTE: RNAV 1.
- NOTE: RADAR required.
- NOTE: If unable to accept climb gradient, advise ATC on initial contact.
- NOTE: For non-GPS equipped aircraft ONM DME must be operational.

NOTE: Chart not to scale.



(NARRATIVE ON FOLLOWING PAGE)



DEPARTURE ROUTE DESCRIPTION

TAKEOFF RUNWAY 3: Climb heading 034° to 6000, then right turn direct DLSOL, then on track 173° to YUGLU, cross YUGLU at or below 9000, then on depicted route to MNZNO, cross MNZNO at or above 11500. Thence

TAKEOFF RUNWAY 8: Climb heading 079° to 5860, then right turn direct DLSOL, then on track 173° to YUGLU, cross YUGLU at or below 9000, then on depicted route to MNZNO, cross MNZNO at or above 11500. Thence

. . . . (transition). Maintain FL200, expect filed altitude ten minutes after departure.

CHISUM TRANSITION (MNZNO3.CME)

LAMSE TRANSITION (MNZNO3.LAMSE)

MOLVE TRANSITION (MNZNO3.MOLVE)

SOCORRO TRANSITION (MNZNO3.ONM)

ST JOHNS TRANSITION (MNZNO3.SJN)

TEXICO TRANSITION (MNZNO3.TXO)

SW-1, 28 NOV 2024 to 26 DEC 2024

SW-1, 28 NOV 2024 to 26 DEC 2024