

WAAS CH 61200 W18A	APP CRS 186°	Rwy Idg 7001 TDZE 84 Apt Elev 89
--	------------------------	---

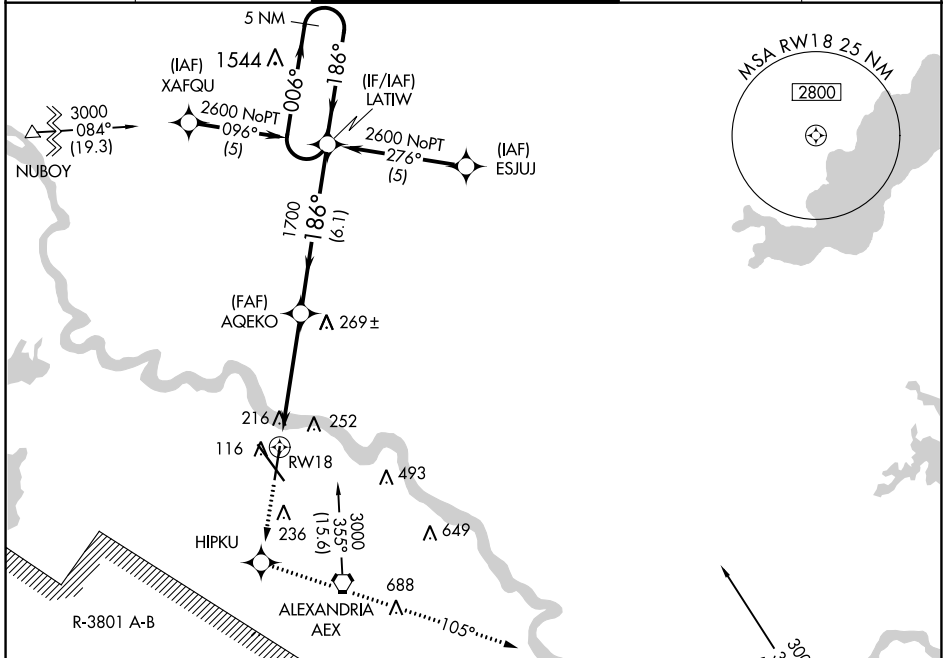
RNAV (GPS) RWY 18

ALEXANDRIA INTL (AEX)

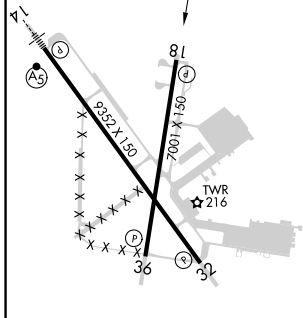
▼ DME/DME RNP-0.3 NA. Radar required when R-3801 A-B in use. For uncompensated Baro-VNAV systems, LNAV/VNAV NA below -15°C (5°F) or above 48°C (119°F).
▲ Visibility reduction by helicopters NA.

MISSED APPROACH: Climb to 4000 direct HIPKU and via 105° track to MUSHE and hold.

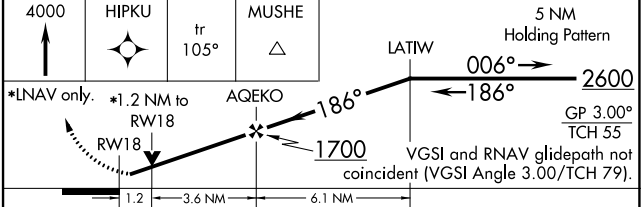
ASOS 123.975	POLK APP CON 125.4 254.8	ALEXANDRIA TOWER 127.35 (CTAF) 269.2	GND CON 121.9 372.0	CLNC DEL 121.9
------------------------	------------------------------------	--	-------------------------------	--------------------------



ELEV 89	D	TDZE 84
---------	----------	---------



TDZL Rwy 14
 REIL Rws 18, 32 and 36
 HIRL Rws 18-36 and 14-32



CATEGORY	A	B	C	D
LPV DA	395-1 311 (400-1)			
LNAV/VNAV DA	539-1½ 455 (500-1½)			
LNAV MDA	520-1	436 (500-1)	520-1¼ 436 (500-1¼)	520-1½ 436 (500-1½)
CIRCLING	540-1 451 (500-1)	560-1 471 (500-1)	700-1¾ 611 (700-1¾)	860-2½ 771 (800-2½)

SC-4, 28 NOV 2024 to 26 DEC 2024

SC-4, 28 NOV 2024 to 26 DEC 2024