

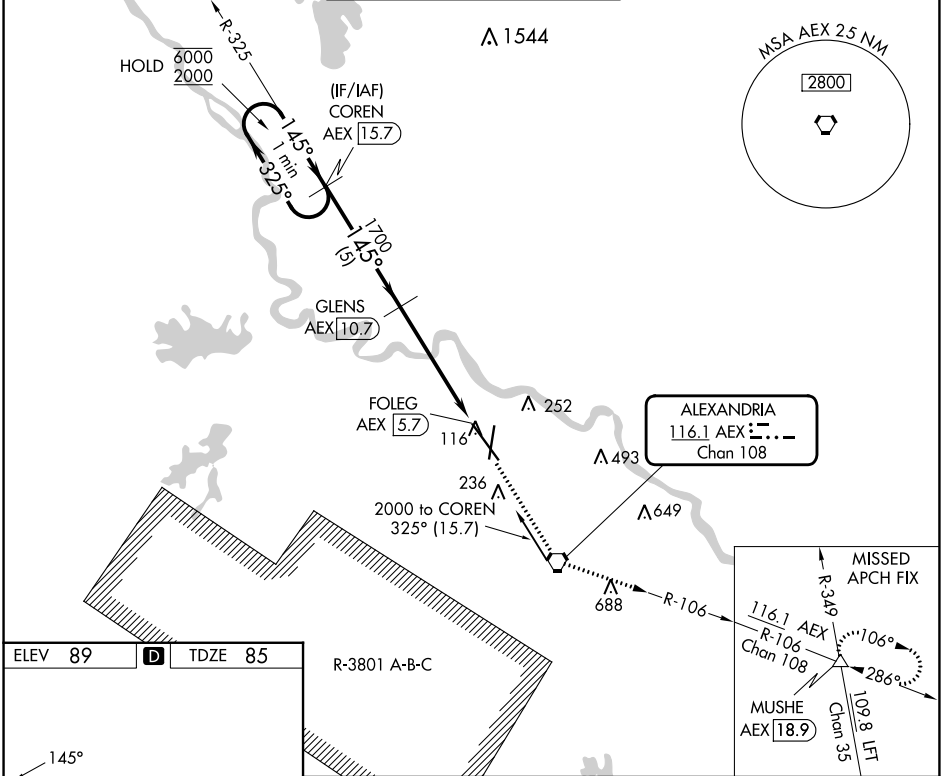
VORTAC AEX 116.1 Chan 108	APP CRS 145°	Rwy ldg TDZE 85 Apt Elev 89	9352
---	------------------------	---	-------------

VOR RWY 14

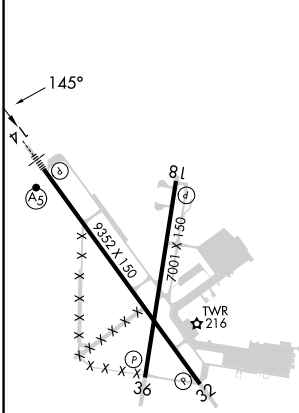
ALEXANDRIA INTL (AEX)

DME required.	MALS/R	MISSED APPROACH: Climb to 4000 direct AEX VORTAC, then on AEX VORTAC R-106 to MUSHE INT and hold.
<p>▼ When R-3801B active, RADAR required.</p> <p>▲ Rwy 14 helicopter visibility reduction below ¾ SM NA.</p>		

ASOS 123.975	POLK APP CON 125.4 254.8	ALEXANDRIA TOWER 127.35 (CTAF) 269.2	GND CON 121.9 372.0	CLNC DEL 121.9
------------------------	------------------------------------	--	-------------------------------	--------------------------

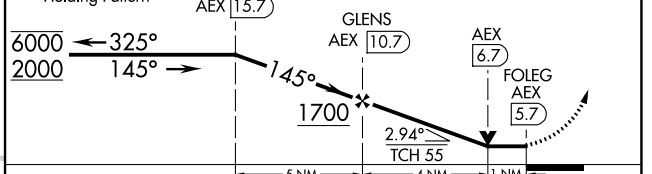


ELEV 89	D	TDZE 85
---------	----------	---------



TDZL Rwy 14
REIL Rws 18, 32 and 36
HIRL Rws 18-36 and 14-32

VGSIs and descent angles not coincident (VGSIs Angle 3.00/TCH 71).			
One Minute Holding Pattern	COREN AEX [15.7]	GLENS AEX [10.7]	FOLEG AEX [5.7]



CATEGORY	A	B	C	D
S-14	500/40	415 (500-¾)		500/55 415 (500-1)
CIRCLING	540-1 451 (500-1)	560-1 471 (500-1)	700-1¾ 611 (700-1¾)	860-2½ 771 (800-2½)

SC-4, 28 NOV 2024 to 26 DEC 2024

SC-4, 28 NOV 2024 to 26 DEC 2024