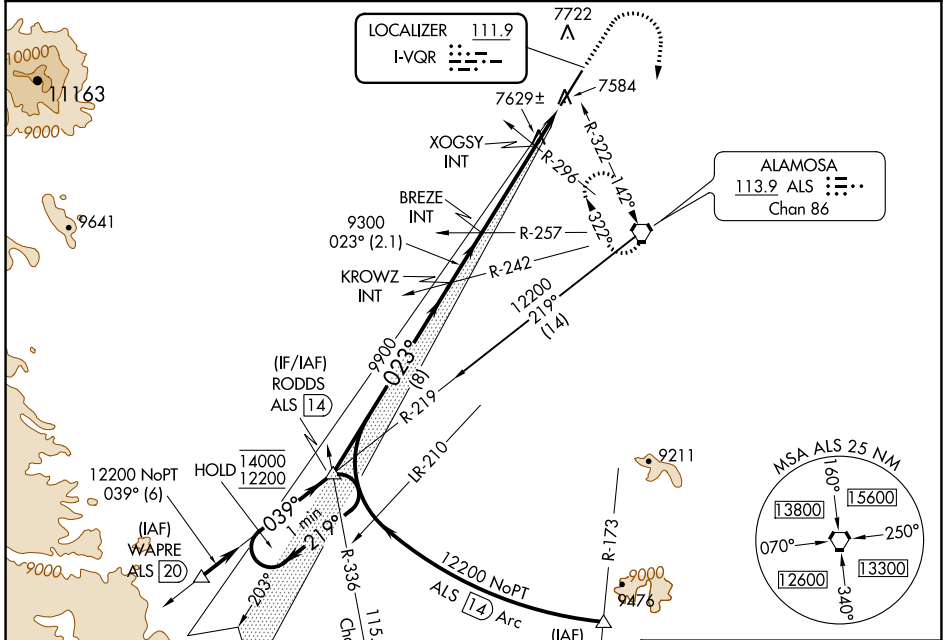


LOC I-VQR 111.9	APP CRS 023°	Rwy ldg 8519
		TDZE 7540
		Apt Elev 7540

ILS or LOC RWY 2
SAN LUIS VALLEY RGNL/BERGMAN FLD (ALS)

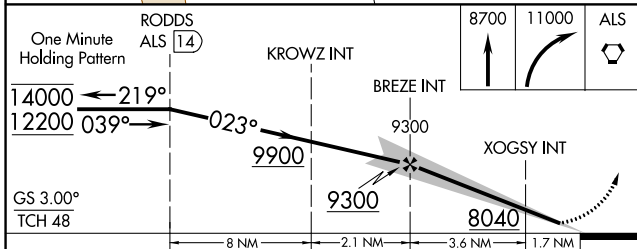
NA For inop ALS, increase S-LOC 2 Cats C/D visibility to 1 3/8 SM. -26°C	MALS ALS	MISSED APPROACH: Climb to 8700 then climbing right turn to 11000 direct ALS VORTAC and hold, continue climb in hold to 11000.
---	-------------	---

ASOS 135.175	DENVER CENTER 128.375 379.95	UNICOM 122.8 (CTAF)
------------------------	--	-------------------------------

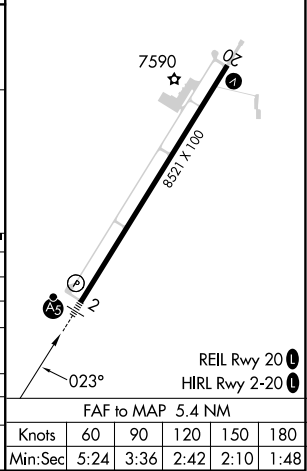


Procedure NA for arrivals at WAPRE on V368 southwest bound.

ELEV 7540	TDZE 7540
-----------	-----------



CATEGORY	A	B	C	D
S-ILS 2	7740-1/2 200 (200-1/2)			
S-LOC 2	8040-1/2 500 (500-1/2)	8040-1 500 (500-1)		
CIRCLING	8040-1 500 (500-1)	8080-1 1/2 540 (600-1 1/2)	8100-2 560 (600-2)	
XOGSY FIX MINIMUMS (DUAL VOR RECEIVERS REQUIRED)				
S-LOC 2	7880-1/2 340 (400-1/2)			
CIRCLING	8040-1 500 (500-1)	8080-1 1/2 540 (600-1 1/2)	8100-2 560 (600-2)	



SW-1, 28 NOV 2024 to 26 DEC 2024

SW-1, 28 NOV 2024 to 26 DEC 2024