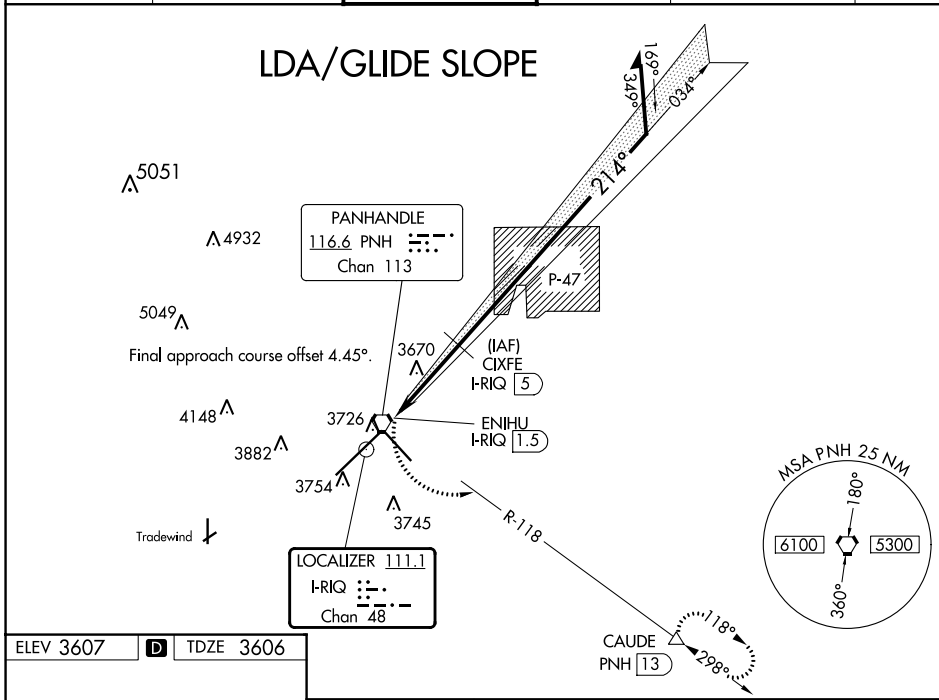


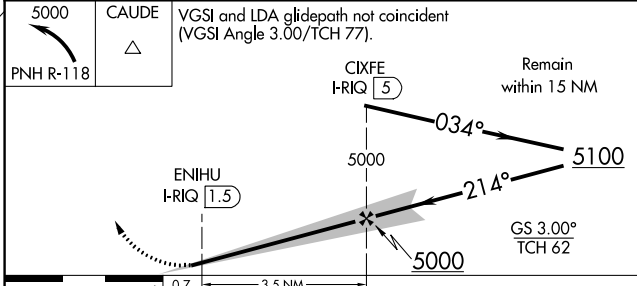
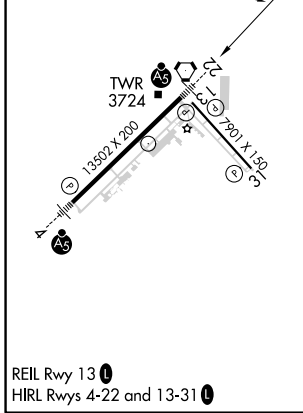
LOC/DME I-RQ <b>111.1</b> Chan <b>48</b>	APP CRS <b>214°</b>	Rwy Idg <b>13502</b> TDZE <b>3606</b> Apt Elev <b>3607</b>
--	------------------------	--

**LDA RWY 22**  
RICK HUSBAND AMARILLO INTL (AMA)

RADAR required for procedure entry.		MALS R-118	MISSED APPROACH: Climbing left turn to 5000 on PNH VORTAC R-118 to CAUDE and hold.				
⚠ For inop ALS, increase LDA/GS-22 all Cats visibility to ¾ SM; increase LDA-22 Cat C/D/E visibility to ⅞ SM. Final approach course offset 4.45 degrees intersects the runway centerline 2509' from Rwy 22 thld. ASR		ATIS <b>118.85 350.3</b>	AMARILLO APP CON* <b>119.5 307.0</b>	AMARILLO TOWER* <b>118.3(CTAF) 257.9</b>	GND CON <b>121.9 348.6</b>	CLNC DEL <b>121.65 239.275</b>	UNICOM <b>122.95</b>



ELEV 3607	D	TDZE 3606
-----------	---	-----------



CATEGORY	A	B	C	D	E
S-LDA/GS 22	3856-½ 250 (300-½)				
S-LDA 22	3920-½	314 (400-½)	3920-¾	314 (400-¾)	
CIRCLING	4080-1	473 (500-1)	4240-1¾ 633 (700-1¾)	4280-2¼ 673 (700-2¼)	4460-3 853 (900-3)

SC-2, 28 NOV 2024 to 26 DEC 2024

SC-2, 28 NOV 2024 to 26 DEC 2024