

APP CRS 309°	Rwy Idg TDZE Apt Elev	7901 3601 3607
------------------------	-----------------------------	---

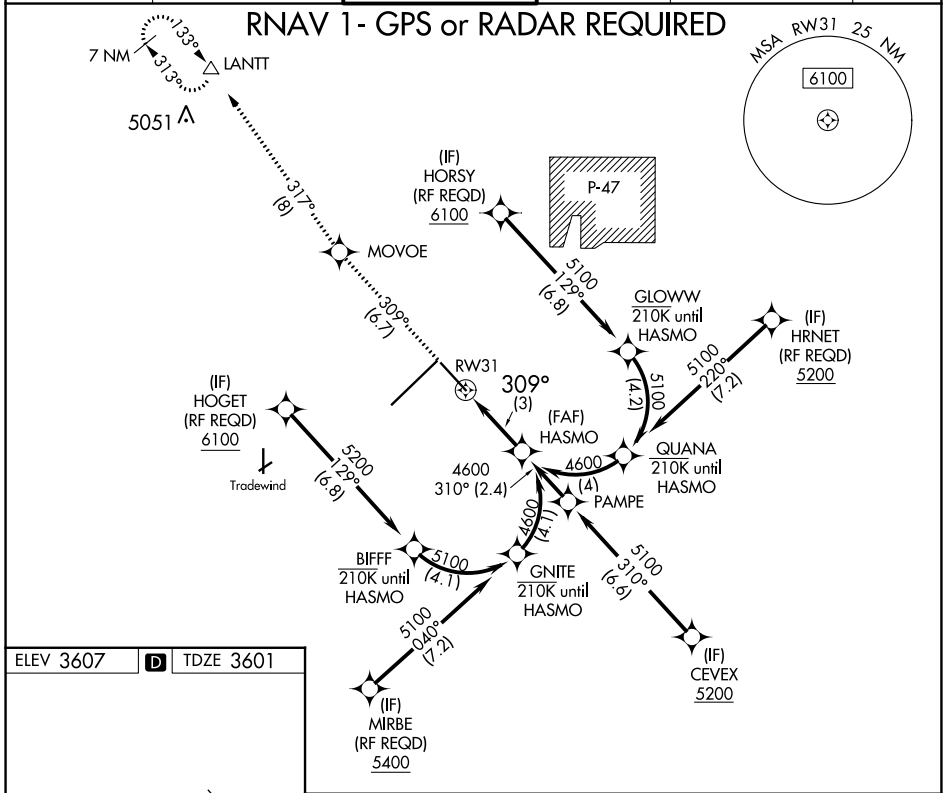
RNAV (RNP) Z RWY 31

RICK HUSBAND AMARILLO INTL (AMA)

ASR For uncompensated Baro-VNAV systems, procedure NA below -14°C (7°F) or above 51°C (124°F). GPS required.

MISSED APPROACH: Climb to 6200 on track 309° to MOVOE and track 317° to LANITT and hold.

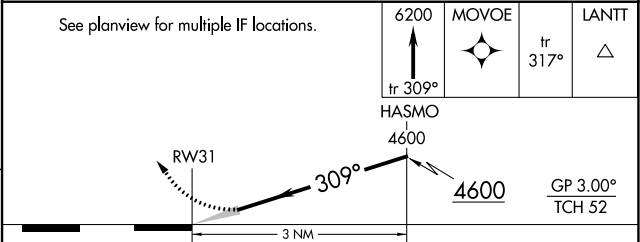
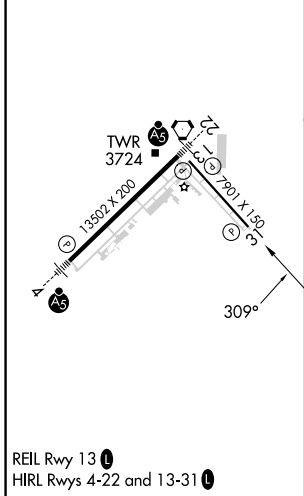
ATIS 118.85 350.3	AMARILLO APP CON* 119.5 307.0	AMARILLO TOWER* 118.3(CTAF) 257.9	GND CON 121.9 348.6	CLNC DEL 121.65 239.275	UNICOM 122.95
-----------------------------	---	---	-------------------------------	-----------------------------------	-------------------------



SC-2, 28 NOV 2024 to 26 DEC 2024

SC-2, 28 NOV 2024 to 26 DEC 2024

ELEV 3607	D	TDZE 3601
-----------	----------	-----------



CATEGORY	A	B	C	D
RNP 0.30 DA		3930-1½	329 (400-1½)	

AUTHORIZATION REQUIRED