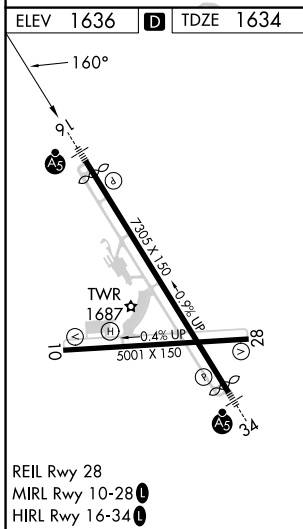
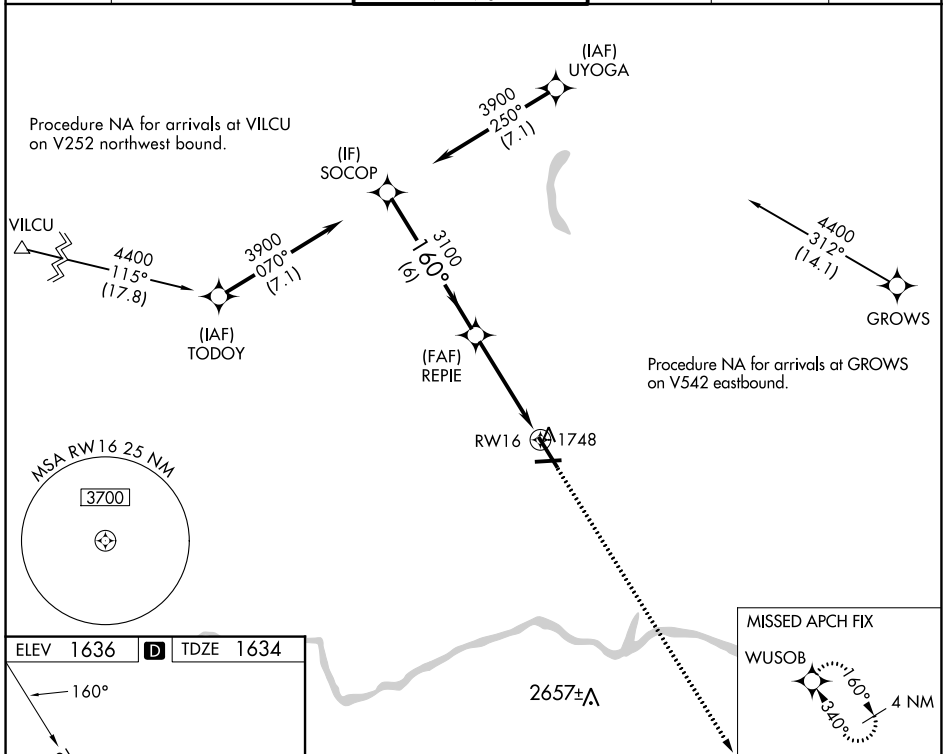


WAAS CH 66015 W16A	APP CRS 160°	Rwy ldg 6905 TDZE 1634 Apt Elev 1636
--	------------------------	---

RNAV (GPS) RWY 16

GREATER BINGHAMTON/EDWIN A LINK FLD (BGM)

RNP APCH.				MALSR MISSED APPROACH: Climb to 4000 direct WUSOB and hold.	
⚠ For uncompensated Baro-VNAV systems, LNAV/VNAV NA below -21°C or above 54°C. For inop ALS, increase LNAV/VNAV all Cats visibility to RVR 5500.					
ATIS 128.15	BINGHAMTON APP CON * 118.6 257.625	BINGHAMTON TOWER * 119.3 (CTAF) 239.25	GND CON 121.9	CLNC DEL 125.05	UNICOM 122.95



SOCOP VGSI and RNAV glidepath not coincident (VGSI Angle 3.00/TCH 61).			
REPIE 3900 160° 3100		RW16 4000 WUSOB *1.1 NM to RW16 *LNAV only	
6 NM		3.3 NM	
1.1 NM			
CATEGORY	A	B	C
LPV DA	1884/24 250 (300-1/2)		
LNAV/VNAV DA	1984/30 350 (400-3/8)		
LNAV MDA	2060/24	426 (500-1/2)	2060/40 426 (500-3/4)
C CIRCLING	2120-1	484 (500-1)	2120-1 1/2 2200-2 484 (500-1 1/2) 564 (600-2)

NE-2, 28 NOV 2024 to 26 DEC 2024

NE-2, 28 NOV 2024 to 26 DEC 2024