

LOC I-AIW 108.9	APP CRS 309°	Rwy Idg 9002
		TDZE 733
		Apt Elev 777

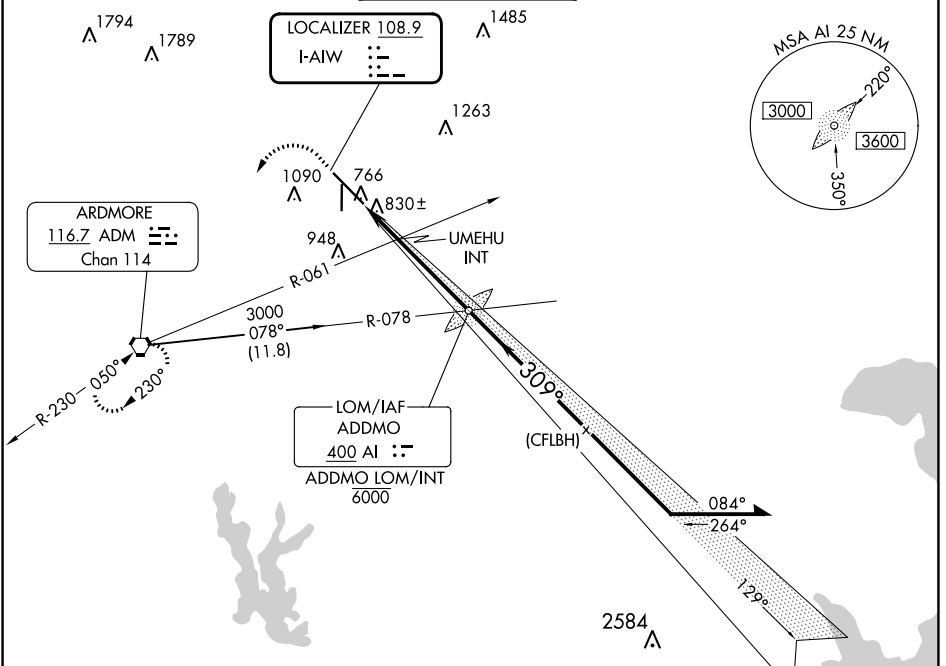
ILS or LOC RWY 31

ARDMORE MUNI (ADM)

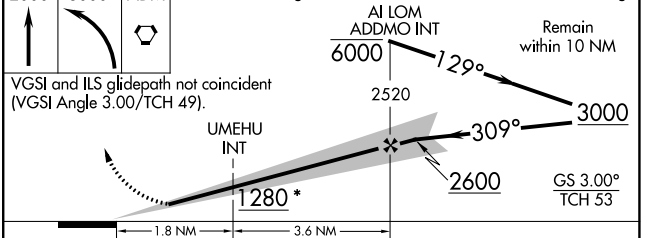
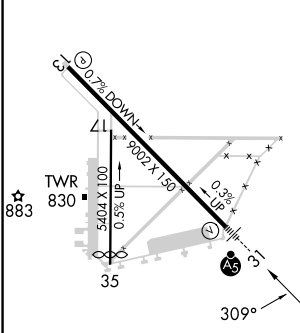
⚠ Autopilot coupled approach NA below 1360. Inop table does not apply to S-ILS 31 all Cats, S-LOC 31 Cats A and B, and UMEHU fix minimums S-LOC 31 Cats A and B. For inop ALS, increase UMEHU fix minimums S-LOC 31 Cats C and D visibility to 1 SM.

MALSR
 MISSED APPROACH: Climb to 2000 then climbing left turn to 3000 direct ADM VORTAC and hold.

ATIS 125.6	FORT WORTH CENTER 124.75 323.0	ARDMORE TOWER ★ 118.5 (CTAF) 257.7	GND CON 121.8	UNICOM 122.95
----------------------	--	--	-------------------------	-------------------------



ELEV 777	D	TDZE 733
----------	----------	----------



	2000	3000	ADM	*1320 when using Ardmore Downtown Executive altimeter setting.											
	↑	↩	⬢	Remain within 10 NM											
	VGSi and ILS glidepath not coincident (VGSi Angle 3.00/TCH 49).														
	<table border="1"> <tr> <td>AI LOM ADDMO INT</td> <td>6000</td> <td>2520</td> <td>3000</td> <td>3000</td> </tr> <tr> <td>Angle</td> <td>129°</td> <td>309°</td> <td>309°</td> <td>GS 3.00° TCH 53</td> </tr> </table>					AI LOM ADDMO INT	6000	2520	3000	3000	Angle	129°	309°	309°	GS 3.00° TCH 53
AI LOM ADDMO INT	6000	2520	3000	3000											
Angle	129°	309°	309°	GS 3.00° TCH 53											
CATEGORY	A	B	C	D											
S-ILS 31	936-1/2 203 (200-1/2)														
S-LOC 31*	1280-1/2	547 (600-1/2)	1280-1 1/8	547 (600-1 1/8)											
CIRCLING	1300-1 523 (600-1)	1440-1 663 (700-1)	1500-2 723 (800-2)	1700-3 923 (1000-3)											
UMEHU FIX MINIMUMS (DUAL RECEIVERS REQUIRED)															
S-LOC 31	1080-1/2	347 (400-1/2)	1080-5/8	347 (400-5/8)											
CIRCLING	1300-1 523 (600-1)	1440-1 663 (700-1)	1500-2 723 (800-2)	1700-3 923 (1000-3)											

HIRL Rwy 13-31	MIRL Rwy 17-35				
FAF to MAP 5.4 NM					
Knots	60	90	120	150	180
Min:Sec	5:24	3:36	2:42	2:10	1:48

SC-1, 28 NOV 2024 to 26 DEC 2024

SC-1, 28 NOV 2024 to 26 DEC 2024