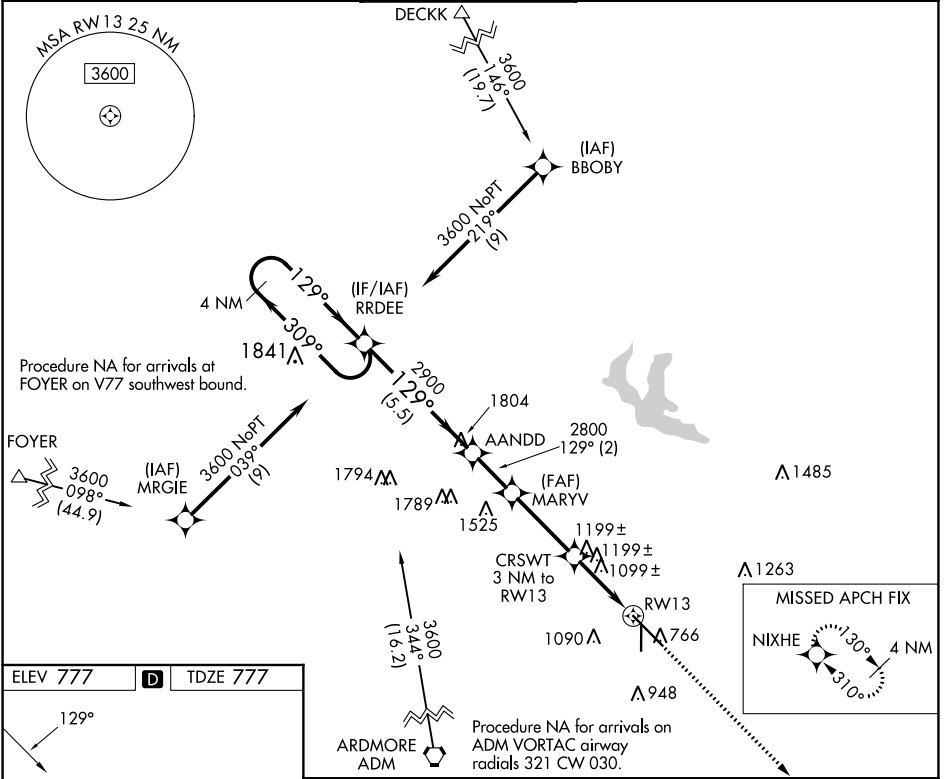


WAAS CH <b>53725</b> W13A	APP CRS <b>129°</b>	Rwy Idg TDZE Apt Elev	<b>9002</b> <b>777</b> <b>777</b>
---------------------------------	------------------------	-----------------------------	-----------------------------------------

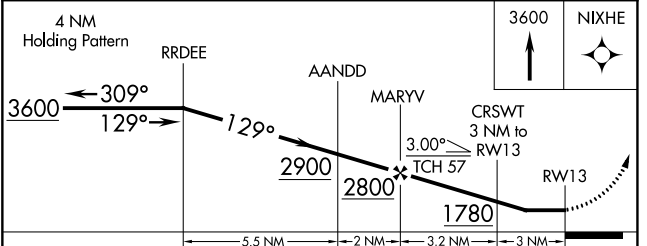
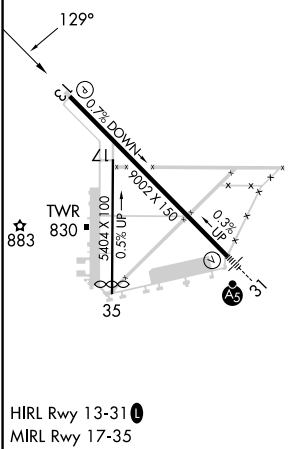
# RNAV (GPS) RWY 13

ARDMORE MUNI (ADM)

RNP APCH.		ARDMORE TOWER ★ <b>118.5 (CTAF) 0 257.7</b>		GND CON <b>121.8</b>	UNICOM <b>122.95</b>
Rwy 13 helicopter visibility reduction below 1 SM NA. When local altimeter setting not received, use Ardmore Downtown Exec altimeter setting and increase all MDA 40 feet. Procedure NA at night.	MISSED APPROACH: Climb to 3600 direct NIXHE and hold.				



ELEV <b>777</b>	<b>D</b>	TDZE <b>777</b>
-----------------	----------	-----------------



CATEGORY	A	B	C	D
LP MDA	1360-1	583 (600-1)	1360-1 $\frac{3}{4}$	583 (600-1 $\frac{3}{4}$ )
LNAV MDA	1460-1	683 (700-1)	1460-2	683 (700-2)

SC-1, 28 NOV 2024 to 26 DEC 2024

SC-1, 28 NOV 2024 to 26 DEC 2024