

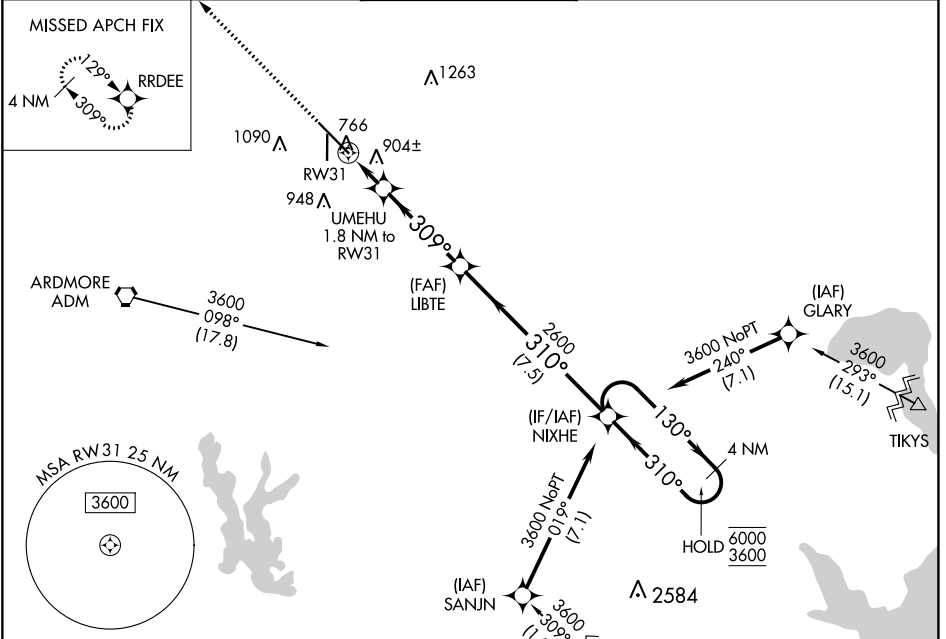
WAAS CH 69625 W31A	APP CRS 309°	Rwy Idg 9002 TDZE 733 Apt Elev 777
----------------------------------------	------------------------	---------------------------------------------------------------

RNAV (GPS) RWY 31

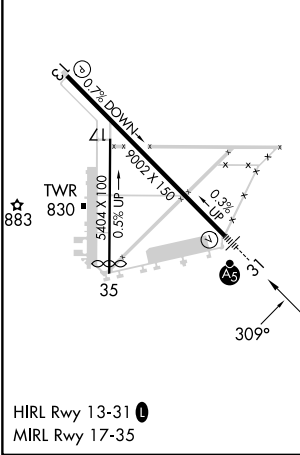
ARDMORE MUNI (ADM)

RNP APCH - GPS.		MALS R	MISSED APPROACH: Climb to 3600 direct RRDEE and hold.
<p>⚠ For uncompensated Baro-VNAV systems, LNAV/VNAV NA below -16°C or above 54°C. Inop table does not apply to LPV all Cats. For inop ALS, increase LNAV/VNAV all Cats and LNAV Cats C and D visibility to 1½ SM.</p>			

ATIS 125.6	FORT WORTH CENTER 124.75 323.0	ARDMORE TOWER ★ 118.5 (CTAF) 0 257.7	GND CON 121.8	UNICOM 122.95
----------------------	------------------------------------------	------------------------------------------------	-------------------------	-------------------------



ELEV 777	D	TDZE 733
----------	----------	----------



	3600 RRDEE	UMEHU 1.8 NM to RW31	LIBTE 2600	NIXHE	4 NM Holding Pattern
		1.2 NM to RW31			130° → 6000 ← 310° 3600
		1.2 NM	0.6	3.9 NM	7.5 NM
CATEGORY	A	B	C	D	
LPV DA		933-½	200 (200-½)		
LNAV/VNAV DA		1200-1	467 (500-1)		
LNAV MDA	1160-½	427 (400-½)	1160-¾	427 (400-¾)	
CIRCLING	1300-1 523 (600-1)	1440-1 663 (700-1)	1500-2 723 (800-2)	1700-3 923 (1000-3)	

SC-1, 28 NOV 2024 to 26 DEC 2024

SC-1, 28 NOV 2024 to 26 DEC 2024