

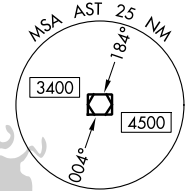
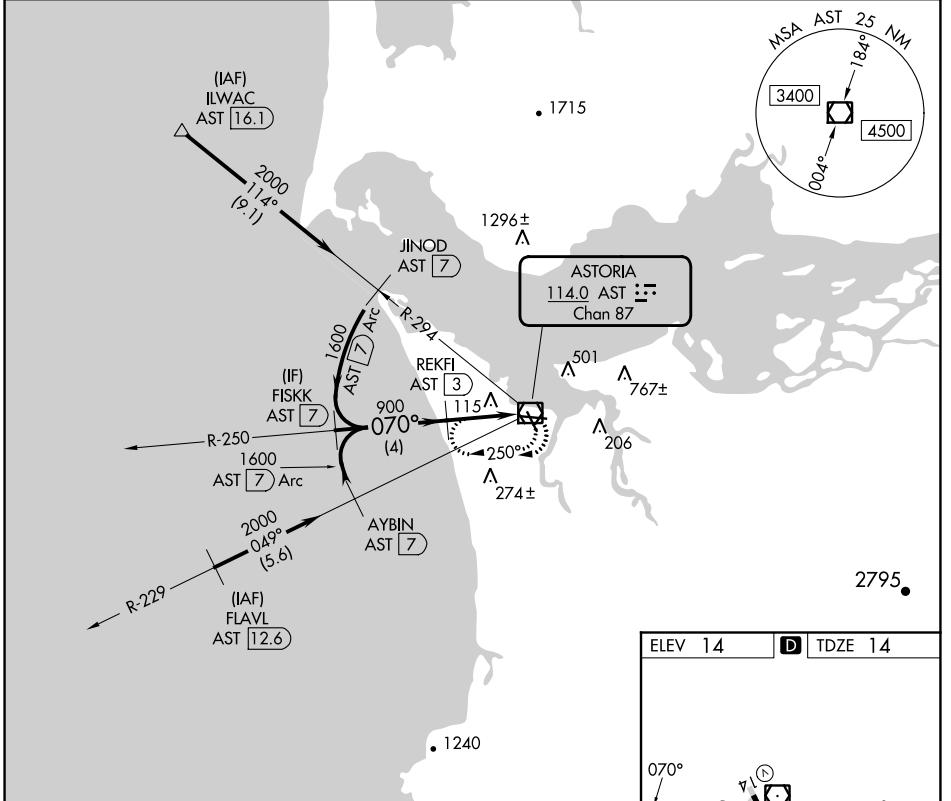
VOR/DME AST 114.0 Chan 87	APP CRS 070°	Rwy Idg 4894 TDZE 14 Apt Elev 14
---	------------------------	---

COPTER VOR RWY 8

ASTORIA RGNL (AST)

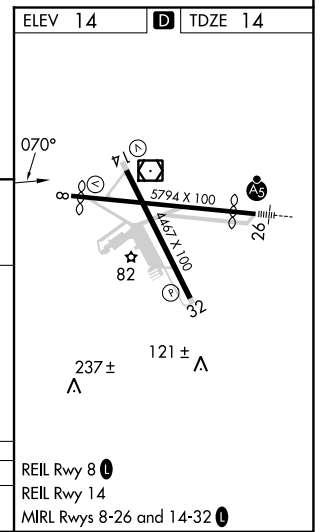
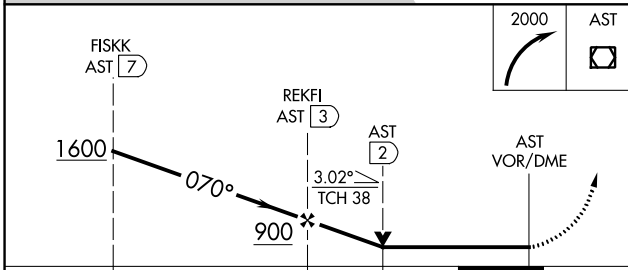
DME required.	MISSED APPROACH: Climbing right turn to 2000 in AST VOR/DME holding pattern.
---------------	--

ASOS 135.375	SEATTLE CENTER 124.2 317.6	UNICOM 122.8 (CTAF) 0
------------------------	--------------------------------------	---------------------------------



NW-1, 28 NOV 2024 to 26 DEC 2024

NW-1, 28 NOV 2024 to 26 DEC 2024



CATEGORY	COPTER	REIL Rwy 8 REIL Rwy 14 MIRL Rwy 8-26 and 14-32
H-8	580-3/4 566 (600-3/4)	