

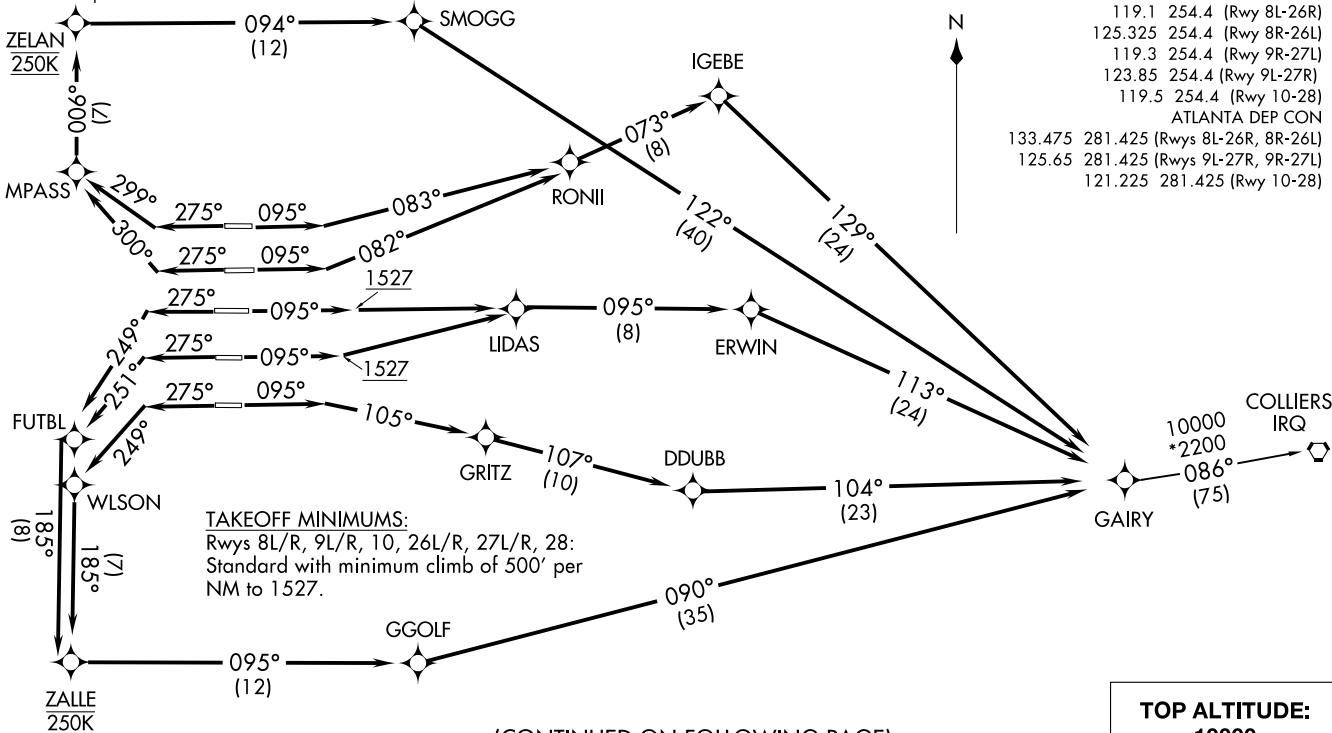
GAIRY TWO DEPARTURE (RNAV)
(GAIRY2, GAIRY) 10 NOV 16

HARTSFIELD/JACKSON ATLANTA INTL (ATL)
ATLANTA, GEORGIA

NOTE: If unable to accept climb rate, advise Clearance Delivery on initial contact.
 NOTE: Use departure frequency depicted unless otherwise advised.
 NOTE: For Turbojet aircraft only.
 NOTE: DME/DME/IRU or GPS Required.
 NOTE: RNAV 1.
 NOTE: RADAR Required for non-GPS equipped aircraft.
 NOTE: Accelerate to 250K, if unable, advise both tower and Departure Control on initial contact.

NOTE: Transponder code will be issued via PDC or Atlanta Clearance Delivery.
 NOTE: Aircraft at Midfield Ramps will advise Ramp Towers of departure SID prior to pushback. Upon receipt of ATC clearance (from ATL Clearance Delivery), read back only your call sign and transponder code, unless you have a question.

D-ATIS 125.55
 CLNC DEL 118.1
 CPDLC
 GND CON
 121.9 254.4 (Rwys 8L-26R, 8R-26L)
 121.75 254.4 (Rwys 9L-27R, 9R-27L)
 121.65 254.4 (Rwy 10-28)
 ATLANTA TOWER
 119.1 254.4 (Rwy 8L-26R)
 125.325 254.4 (Rwy 8R-26L)
 119.3 254.4 (Rwy 9R-27L)
 123.85 254.4 (Rwy 9L-27R)
 119.5 254.4 (Rwy 10-28)
 ATLANTA DEP CON
 133.475 281.425 (Rwys 8L-26R, 8R-26L)
 125.65 281.425 (Rwys 9L-27R, 9R-27L)
 121.225 281.425 (Rwy 10-28)



(CONTINUED ON FOLLOWING PAGE)

NOTE: Chart not to scale.

(GAIRY2, GAIRY) 24305
GAIRY TWO DEPARTURE (RNAV)

HARTSFIELD/JACKSON ATLANTA INTL (ATL)
ATLANTA, GEORGIA
AL-26 (FAA)



DEPARTURE ROUTE DESCRIPTION
SEE ADDITIONAL REQUIREMENTS ON AAUP

TAKEOFF RWY 8L: Climb heading 095° to intercept course 083° to RONII, then on depicted route to GAIRY, thence. . . .

TAKEOFF RWY 8R: Climb heading 095° to intercept course 082° to RONII, then on depicted route to GAIRY, thence. . . .

TAKEOFF RWYS 9L/R: Climb heading 095° to 1527, then direct LIDAS, then on depicted route to GAIRY, thence. . . .

TAKEOFF RWY 10: Climb heading 095° to intercept course 105° to GRITZ, then on depicted route to GAIRY, thence. . . .

TAKEOFF RWY 26L: Climb heading 275° to intercept course 300° to MPASS, then on depicted route to GAIRY, maintain 250K until ZELAN, thence. . . .

TAKEOFF RWY 26R: Climb heading 275° to intercept course 299° to MPASS, then on depicted route to GAIRY, maintain 250K until ZELAN, thence. . . .

TAKEOFF RWY 27L: Climb heading 275° to intercept course 251° to FUTBL, then on depicted route to GAIRY, maintain 250K until ZALLE, thence. . . .

TAKEOFF RWY 27R: Climb heading 275° to intercept course 249° to FUTBL, then on depicted route to GAIRY, maintain 250K until ZALLE, thence. . . .

TAKEOFF RWY 28: Climb heading 275° to intercept course 249° to WLSON, then on depicted route to GAIRY, maintain 250K until ZALLE, thence. . . .

. . . .maintain 10000. Expect clearance to filed altitude ten minutes after departure.

COLLIERS TRANSITION (GAIRY2.IRQ)

SE-4, 28 NOV 2024 to 26 DEC 2024

SE-4, 28 NOV 2024 to 26 DEC 2024