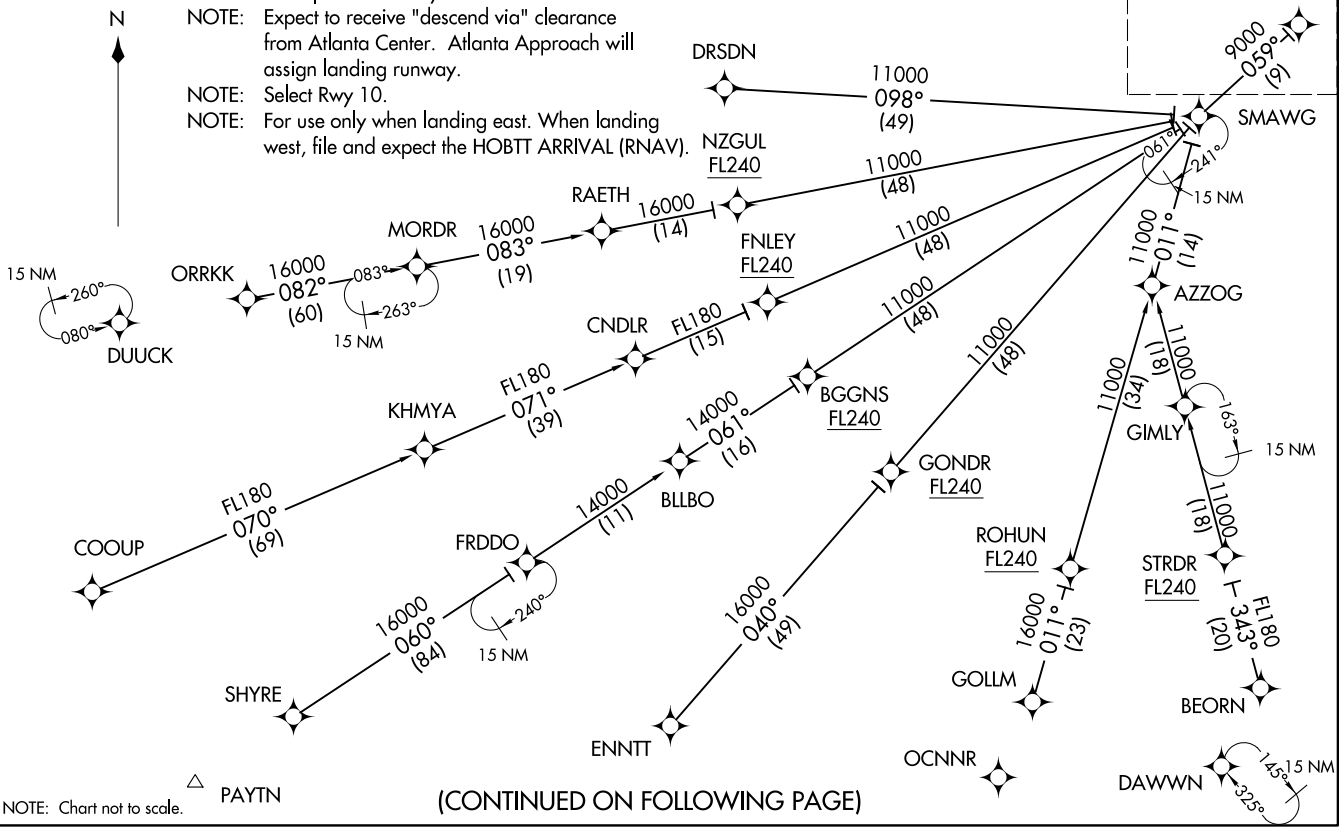


GNDLF TWO ARRIVAL (RNAV) Transition Routes
ATLANTA, GEORGIA
HARTSFIELD/JACKSON ATLANTA INTL (ATL)
(GNDLF:GNDLF2) 01FEB18

D-ATIS ARR
119.65
ATLANTA APP CON
127.9 379.9

- NOTE: RADAR required.
- NOTE: RNAV 1.
- NOTE: DME/DME/IRU or GPS required.
- NOTE: Turbojet aircraft only.
- NOTE: Expect to receive "descend via" clearance from Atlanta Center. Atlanta Approach will assign landing runway.
- NOTE: Select Rwy 10.
- NOTE: For use only when landing east. When landing west, file and expect the HOBTT ARRIVAL (RNAV).

See following page for Arrival Routes. GNDLF
11000 250K



(CONTINUED ON FOLLOWING PAGE)

(GNDLF:GNDLF2) 24305
AL-26 (FAA) HARTSFIELD/JACKSON ATLANTA INTL (ATL)
ATLANTA, GEORGIA
GNDLF TWO ARRIVAL (RNAV) Transition Routes

(GNDLF.GNDLF2) 01FEB18
GNDLF TWO ARRIVAL (RNAV) Arrival Routes
 HARTSFIELD/JACKSON ATLANTA INTL (ATL)
 ATLANTA, GEORGIA

ARRIVAL ROUTE DESCRIPTION

BEORN TRANSITION (BEORN.GNDLF2):
COOUP TRANSITION (COOUP.GNDLF2): Assigned by ATC only.
DRSDN TRANSITION (DRSDN.GNDLF2):
ENNTT TRANSITION (ENNTT.GNDLF2):
FRDDO TRANSITION (FRDDO.GNDLF2):
GOLLM TRANSITION (GOLLM.GNDLF2):
KHMYA TRANSITION (KHMYA.GNDLF2): Assigned by ATC only.
ORRKK TRANSITION (ORRKK.GNDLF2):
SHYRE TRANSITION (SHYRE.GNDLF2):
STRDR TRANSITION (STRDR.GNDLF2):

From GNDLF on track 059° to cross HALRR at or above 10000 and at 250K, then on track 059° to cross SHULR at 8000, then on track 036° to JNGLE, then on track 005° to QUBIT, then on track 005°. Expect RADAR vectors to final approach course.

LOST COMMUNICATIONS:

ASSIGNED RWY 10 or NOT ASSIGNED: Cross HALRR at or above 10000; cross SHULR at 8000; cross QUBIT at 5000; after QUBIT descend to 3000 and proceed direct DEWHY; proceed on the ILS or RNAV Rwy 10 approach.

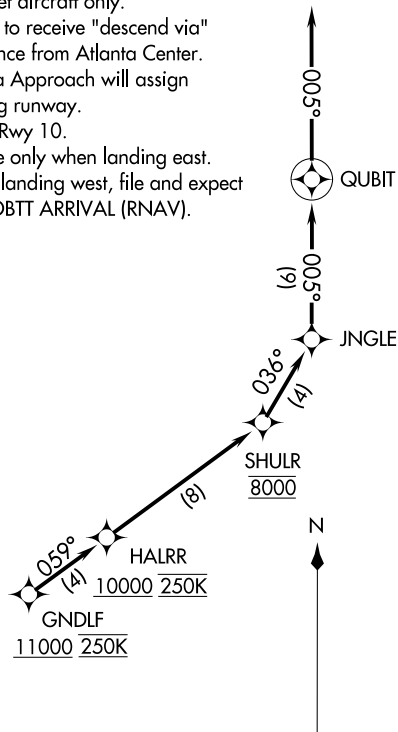
ASSIGNED RWY 9L: Cross HALRR at or above 10000; cross SHULR at 8000; cross QUBIT at 6000; after QUBIT proceed direct RYENN and proceed on the ILS or RNAV Rwy 9L approach.

ASSIGNED RWY 9R: Cross HALRR at or above 10000; cross SHULR at 8000; cross QUBIT at 6000; after QUBIT proceed direct ANDIY and proceed on the ILS or RNAV Rwy 9R approach.

ASSIGNED RWY 8L: Cross HALRR at or above 10000; cross SHULR at 8000; cross QUBIT at 6000; after QUBIT proceed direct LARII and proceed on the ILS or RNAV Rwy 8L approach.

ASSIGNED RWY 8R: Cross HALRR at or above 10000; cross SHULR at 8000; cross QUBIT at 6000; after QUBIT proceed direct GPEAT and proceed on the ILS or RNAV Rwy 8R approach.

NOTE: RADAR required.
 NOTE: RNAV 1.
 NOTE: DME/DME/IRU or GPS required.
 NOTE: Turbojet aircraft only.
 NOTE: Expect to receive "descend via" clearance from Atlanta Center. Atlanta Approach will assign landing runway.
 NOTE: Select Rwy 10.
 NOTE: For use only when landing east. When landing west, file and expect the HOBTT ARRIVAL (RNAV).



D-ATIS ARR
 119.65
 ATLANTA APP CON
 127.9 379.9

NOTE: Chart not to scale.

(GNDLF.GNDLF2) 24305
GNDLF TWO ARRIVAL (RNAV) Arrival Routes
 ATLANTA, GEORGIA
 HARTSFIELD/JACKSON ATLANTA INTL (ATL)
 ATLANTA, GEORGIA
 AL-26 (FAA)