

LOC/DME I-OMO 111.55 Chan 52 (Y)	APP CRS 095°	Rwy Idg TDZE 1000 Apt Elev 1026
--	------------------------	---

ILS RWY 10 (CAT II & III)

HARTSFIELD/JACKSON ATLANTA INTL (ATL)

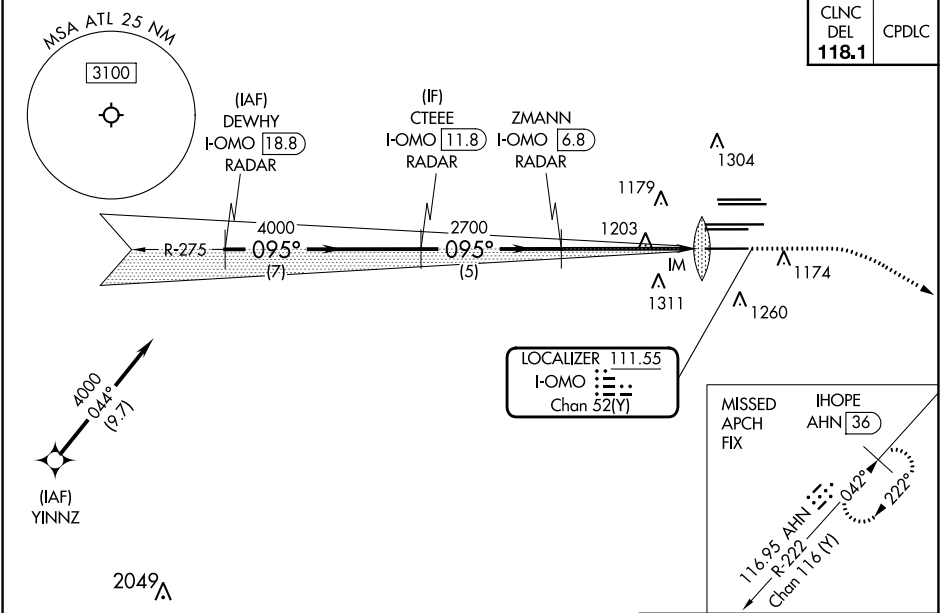
DME or RADAR required. RNP APCH - GPS from YNNZ.

Simultaneous approach authorized with Rwy 9L or 8R or 8L, or Rwy 9L and 8L.

ALSF-2

MISSED APPROACH: Climb to 1400 then climbing right turn to 3000 on heading 120° and AHN R-222 to IHOPE/AHN 36 DME and hold.

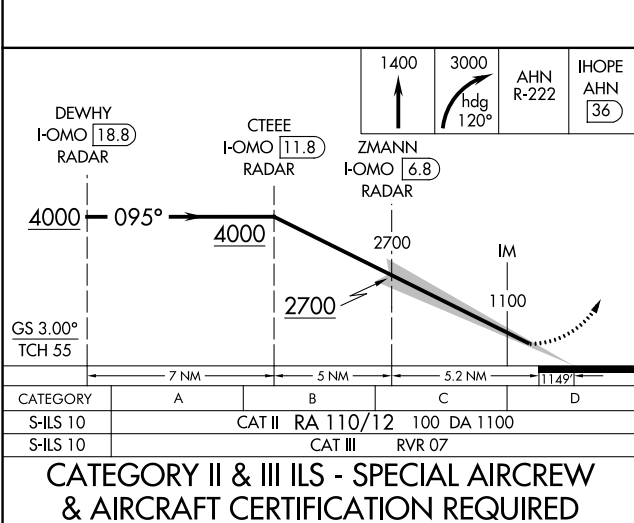
D-ATIS ARR 119.65	ATLANTA APP CON 127.9 379.9	ATLANTA TOWER 8L-26R 8R-26L 9L-27R 9R-27L 10-28 RWYS 119.1 125.325 123.85 119.3 119.5 254.4	ALL RWYS 121.9	GND CON 8L-26R,8R-26L 9L-27R,9R-27L 10-28 RWYS 121.75 121.65 254.4	ALL RWYS 254.4
-----------------------------	--	--	-----------------------------	---	-----------------------------



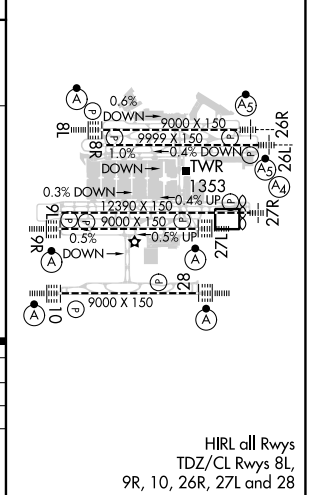
CLNC DEL 118.1	CPDLC
-----------------------------	-------

SE-4, 28 NOV 2024 to 26 DEC 2024

SE-4, 28 NOV 2024 to 26 DEC 2024



ELEV 1026	D	TDZE 1000
------------------	----------	------------------



CATEGORY II & III ILS - SPECIAL AIRCREW & AIRCRAFT CERTIFICATION REQUIRED

HIRL all Rwy
TDZ/CL Rwy 8L,
9R, 10, 26R, 27L and 28