

LOC/DME I-HFW 109.3 Chan 30	APP CRS 095°	Rwy Idg 8800 TDZE 1015 Apt Elev 1026
---	------------------------	---

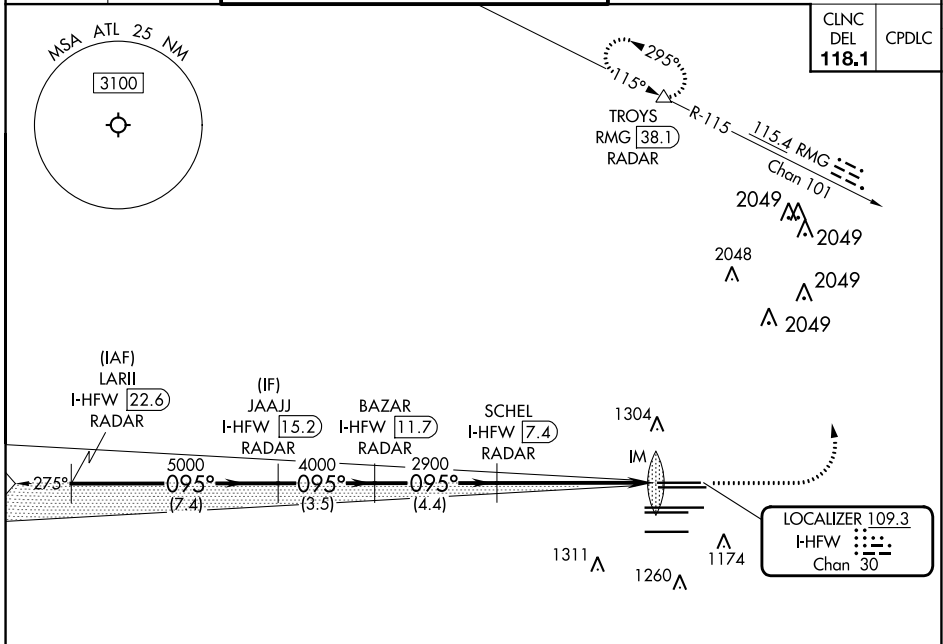
ILS RWY 8L (CAT II & III)

HARTSFIELD/JACKSON ATLANTA INTL (ATL)

RADAR required for procedure entry. DME or RADAR required. **ALSIF-2** MISSED APPROACH: Climb to 1500 then climbing left turn to 3500 on heading 360° and RMG VORTAC R-115 to TROYS/RMG 38.1 DME/RADAR and hold.

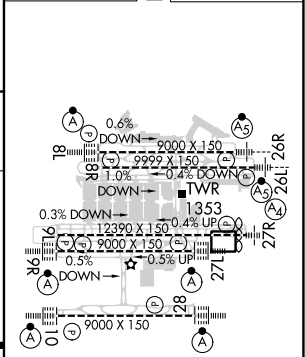
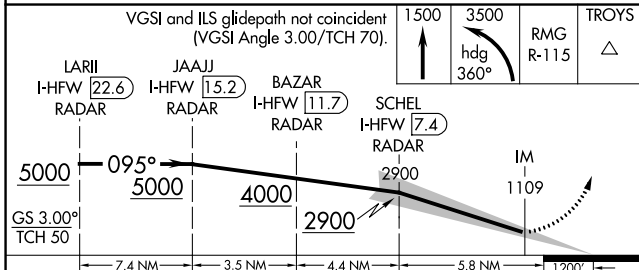
Simultaneous approach authorized.

D-ATIS ARR 119.65 DEP 125.55	ATLANTA APP CON 127.9 379.9	ATLANTA TOWER 8L-26R 8R-26L 9L-27R 9R-27L 10-28 RWYWS 119.1 125.325 123.85 119.3 119.5 254.4	ALL RWYWS 121.9 121.75 121.65 254.4	GND CON 9L-27R, 9R-27L 10-28 121.9 121.75 121.65 254.4	ALL RWYWS
--	--	---	--	---	--------------



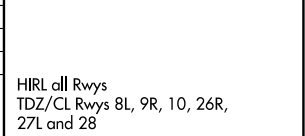
CLNC DEL 118.1	CPDLC
-----------------------------	-------

ELEV 1026	D TDZE 1015
-----------	--------------------



CATEGORY	A	B	C	D
S-ILS 8L	CAT II RA 105/12 100 DA 1115			
S-ILS 8L	CAT III RVR 06			

CATEGORY II & III ILS SPECIAL AIRCREW & AIRCRAFT CERTIFICATION REQUIRED



SE-4, 28 NOV 2024 to 26 DEC 2024

SE-4, 28 NOV 2024 to 26 DEC 2024