

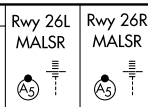
LOC/DME I-BRU <b>108.7</b> Chan 24	APP CRS <b>275°</b>	Rwy Idg TDZE Apt Elev	26L <b>9999</b> <b>996</b> <b>1026</b>	26R <b>8500</b> <b>990</b> <b>1026</b>
--	------------------------	-----------------------------	---	---

# ILS or LOC RWY 26L

HARTSFIELD/JACKSON ATLANTA INTL (ATL)

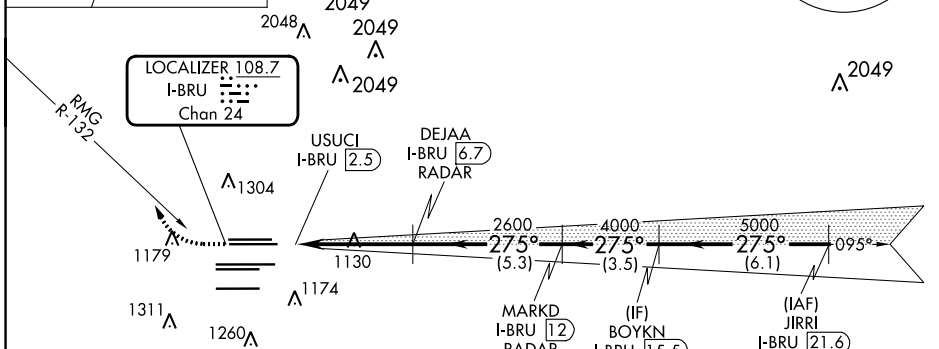
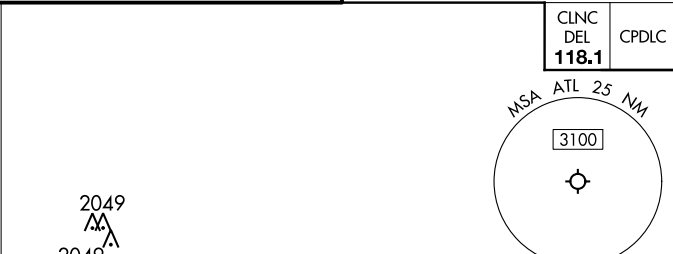
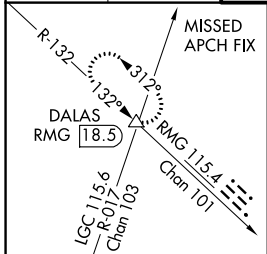
RADAR required.

▼ Inop table does not apply to sidestep Rwy 26R Cats A and B. For inop ALS, increase S-ILS 26L all Cats visibility to RVR 4500 and S-LOC 26L Cat E visibility to RVR 6000. For inop ALS to Rwy 26R, increase sidestep 26R Cat E visibility to 2 SM. Simultaneous approach authorized.

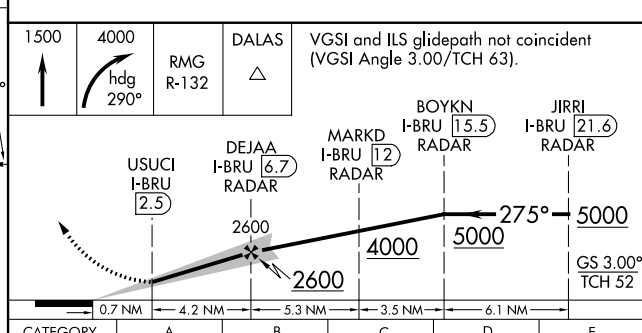
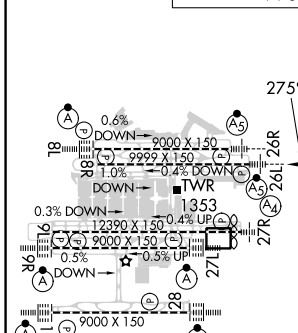


MISSED APPROACH: Climb to 1500 then climbing right turn to 4000 on heading 290° and RGM R-132 to DALAS INT/RMG VORTAC 18.5 DME and hold.

D-ATIS ARR <b>119.65</b>	ATLANTA APP CON <b>127.9</b>	ATLANTA TOWER				ALL RWYS	GND CON	ALL RWYS
DEP <b>125.55</b>	<b>127.9</b>	8L-26R	8R-26L	9L-27R	9R-27L	10-28	(8L-26R, 8R-26L) (9L-27R, 9R-27L)	10-28
		<b>119.1</b>	<b>125.325</b>	<b>123.85</b>	<b>119.3</b>	<b>119.5</b>	<b>121.9</b>	<b>121.65</b>
							<b>254.4</b>	<b>254.4</b>



ELEV 1026	<b>D</b>	TDZE 26L 996	TDZE 26R 990
-----------	----------	--------------	--------------



FAF to MAP 4.2 NM	HIRL all Rwsy TDZ/CL Rwsy 8L, 9R, 10, 26R, 27L and 28				
Knots	60	90	120	150	180
Min:Sec	4:12	2:48	2:06	1:41	1:24
S-ILS 26L	1280/24 284 (300-1/2)				
S-LOC 26L	1380/24	384 (400-1/2)	1380/35	384 (400-3/8)	
SIDESTEP 26R	1380/55 390 (400-1)		1380-1 1/2 390 (400-1 1/2)		

SE-4, 28 NOV 2024 to 26 DEC 2024

SE-4, 28 NOV 2024 to 26 DEC 2024