

LOC/DME I-ATL <b>109.9</b> Chan <b>36</b>	APP CRS <b>095°</b>	Rwy Idg TDZE Apt Elev	8R <b>9999 8800</b> <b>1024 1015</b> <b>1026 1026</b>	8L <b>8800</b> <b>1015</b> <b>1026</b>
---	------------------------	-----------------------------	--	---

# ILS or LOC RWY 8R

HARTSFIELD/JACKSON ATLANTA INTL (ATL)

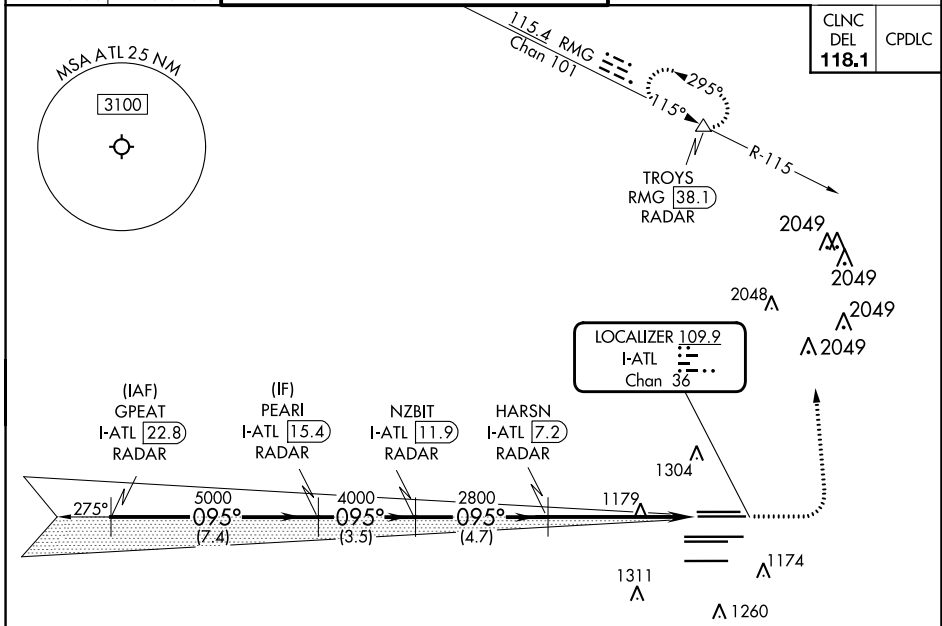
RADAR required for procedure entry.  
DME or RADAR required.

Simultaneous approach authorized. Sidestep 8L for inop ALSF-2, increase Cat E visibility to 2.



MISSED APPROACH: Climb to 1500 then climbing left turn to 3500 on heading 360° and RMG VORTAC R-115 to TROYS/RMG 38.1 DME/RADAR and hold.

D-ATIS ARR <b>119.65</b>	ATLANTA APP CON	ATLANTA TOWER	ALL RWYS	GND CON	ALL RWYS
DEP <b>125.55</b>	<b>127.9 379.9</b>	8L-26R 8R-26L 9L-27R 9R-27L 10-28 <b>119.1 125.325 123.85 119.3 119.5 254.4</b>	(8L-26R,8R-26L) (9L-27R,9R-27L) <b>121.9</b>	10-28 <b>121.75</b>	10-28 <b>121.65 254.4</b>

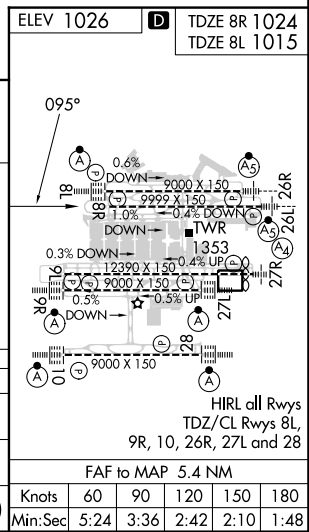


CINCL DEL	CPDLC
<b>118.1</b>	

SE-4, 28 NOV 2024 to 26 DEC 2024

SE-4, 28 NOV 2024 to 26 DEC 2024

VGSi and ILS glidepath not coincident (VGSi Angle 3.00/TCH 67).		1500	3500	RMG R-115	TROYS
		↑	hdg 360°		△
GPEAT I-ATL [22.8] RADAR	PEARL I-ATL [15.4] RADAR	NZBIT I-ATL [11.9] RADAR	HARSN I-ATL [7.2] RADAR	I-ATL [2.9]	I-ATL [1.8]
5000		4000	2800	2800	2800
GS 3.00° TCH 53		5000	4000	2800	2800
7.4 NM		3.5 NM	4.7 NM	4.3 NM	1.1 NM
CATEGORY	A	B	C	D	E
S-ILS 8R	1282/40		258 (300-¾)		
S-LOC 8R	1440/55	416 (500-1)	1440/60		416 (500-1½)
SIDESTEP 8L	1440/55	425 (500-1)	1440/60	1440-1½	425 (500-1½)



FAF to MAP 5.4 NM					
Knots	60	90	120	150	180
Min:Sec	5:24	3:36	2:42	2:10	1:48