

ATLANTA, GEORGIA

AL-26 (FAA)

24305

WAAS CH 65700 W27A	APP CRS 275°	Rwy Idg TDZE 999 Apt Elev 1026
--	------------------------	--

RNAV (GPS) RWY 27L

HARTSFIELD/JACKSON ATLANTA INTL (ATL)

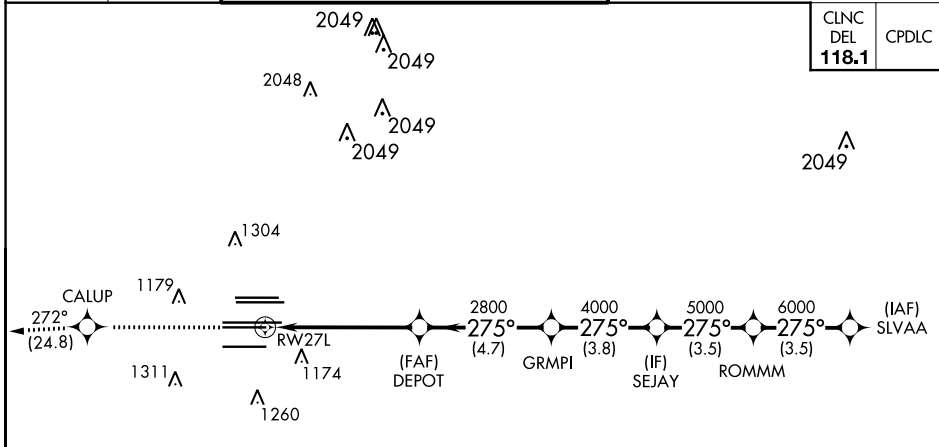
For uncompensated Baro-VNAV systems, LNAV/VNAV NA below -7°C (20°F) or above 54°C (130°F). DME/DME RNP-0.3 NA. Simultaneous approach authorized with Rwy 26R or 26L. LNAV procedure NA during simultaneous operations. Use of FD or AP providing RNAV track guidance required during simultaneous operations.

ALSF-2



MISSED APPROACH: Climb to 4000 direct CALUP and on track 272° to TEMPO and hold.

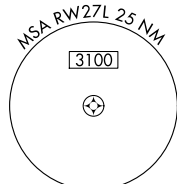
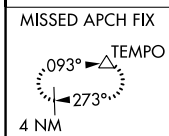
D-ATIS ARR 119.65	ATLANTA APP CON 127.9 379.9	ATLANTA TOWER				ALL RWYS	GND CON	ALL RWYS
DEP 125.55		8L-26R	8R-26L	9L-27R	9R-27L	10-28	(8L-26R,8R-26L) (9L-27R,9R-27L)	10-28
		119.1	125.325	123.85	119.3	119.5	121.9	121.75
					254.4			121.65
								254.4



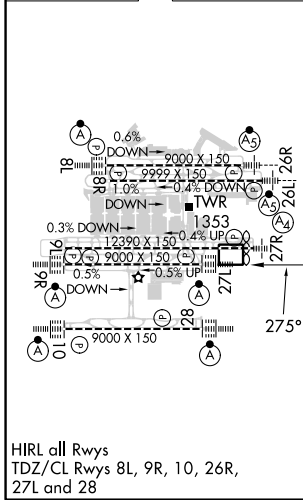
CLNC DEL	CPDLC
118.1	

SE-4, 28 NOV 2024 to 26 DEC 2024

SE-4, 28 NOV 2024 to 26 DEC 2024

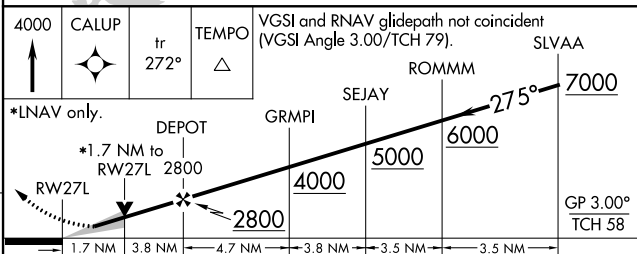


ELEV 1026	D	TDZE 999
-----------	----------	----------



ATLANTA, GEORGIA
Amdt 5A 12OCT17

RADAR REQUIRED



4000	CALUP	tr 272°	TEMPO	VGSI and RNAV glidepath not coincident (VGSI Angle 3.00/TCH 79).	SLVAA
*LNAV only.					
	DEPOT	GRMPI	SEJAY	ROMMMM	SLVAA
	1.7 NM	3.8 NM	4.7 NM	3.8 NM	3.5 NM
CATEGORY	A	B	C	D	
LPV DA	1199/18		200 (200-½)		
LNAV/VNAV DA	1528-1¾		529 (600-1¾)		
LNAV MDA	1620/24	621 (600-½)	1620-1¾	621 (600-1¾)	

33°38'N-84°26'W

RNAV (GPS) RWY 27L

HARTSFIELD/JACKSON ATLANTA INTL (ATL)