

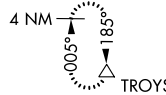
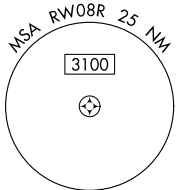
WAAS CH <b>48800</b>	APP CRS <b>095°</b>	Rwy Idg TDZE <b>1024</b>	<b>9999</b>
<b>W08D</b>		Apt Elev <b>1026</b>	

# RNAV (GPS) RWY 8R

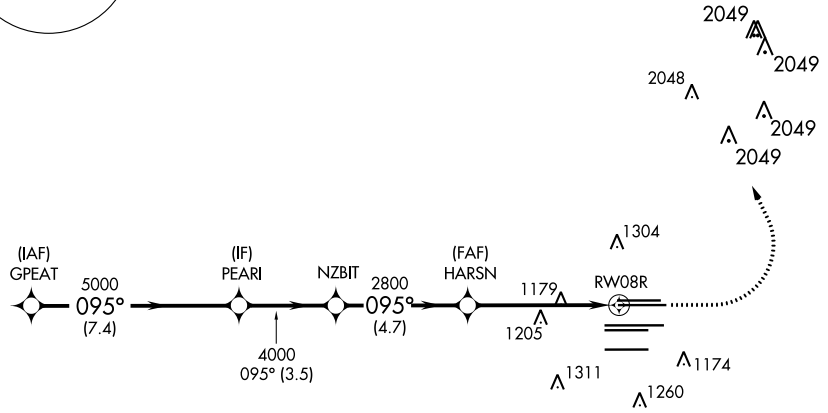
HARTSFIELD/JACKSON ATLANTA INTL (ATL)

RNP APCH - GPS. RADAR required.	MISSED APPROACH: Climb to 1500 then climbing left turn to 3500 direct TROYS and hold.
<p>▼ For uncompensated Baro-VNAV systems, LNAV/VNAV NA below -5°C or above 54°C. Simultaneous approach authorized with Rwy 9L or 9R or 10. LNAV procedure NA during simultaneous operations. Use of FD or AP providing RNAV track guidance required during simultaneous operations.</p>	

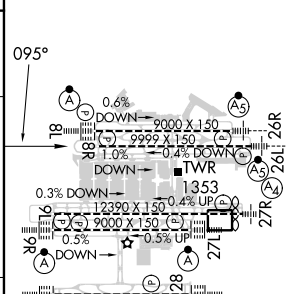
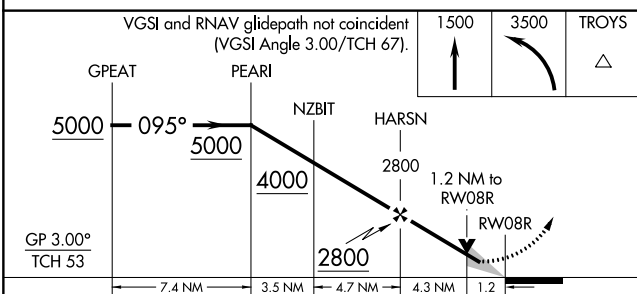
D-ATIS ARR <b>119.65</b>	ATLANTA APP CON DEP <b>127.9 379.9</b>	ATLANTA TOWER 8L-26R 8R-26L 9L-27R 9R-27L 10-28 RWYS				ALL RWYS	GND CON (8L-26R,8R-26L) (9L-27R,9R-27L) 10-28	ALL RWYS			
DEP <b>125.55</b>	<b>127.9 379.9</b>	<b>119.1</b>	<b>125.325</b>	<b>123.85</b>	<b>119.3</b>	<b>119.5</b>	<b>254.4</b>	<b>121.9</b>	<b>121.75</b>	<b>121.65</b>	<b>254.4</b>



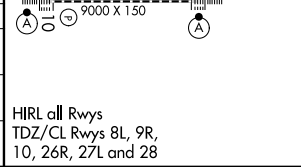
CLNC DEL <b>118.1</b>	CPDLC
-----------------------------	-------



ELEV 1026	<b>D</b> TDZE 1024
-----------	--------------------



CATEGORY	A	B	C	D
LPV DA		1282/40	258 (300-¾)	
LNAV/VNAV DA		1440/60	416 (500-1¼)	
LNAV MDA	1460/55	436 (500-1)	1460-1¼	436 (500-1¼)



SE-4, 28 NOV 2024 to 26 DEC 2024

SE-4, 28 NOV 2024 to 26 DEC 2024