

ATLANTA, GEORGIA

AL-26 (FAA)

24305

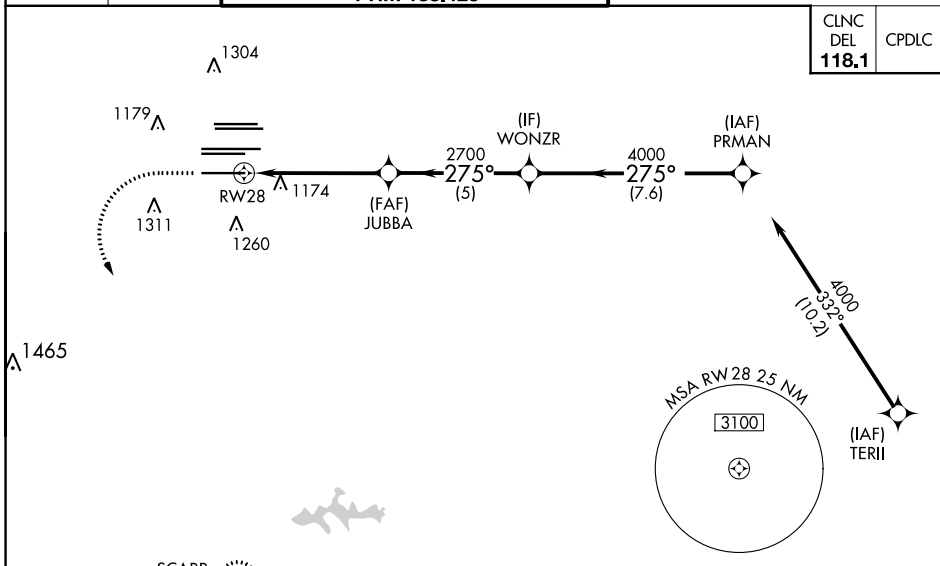
RNAV (GPS) PRM Y RWY 28 (SIMULTANEOUS CLOSE PARALLEL) HARTSFIELD/JACKSON ATLANTA INTL (ATL)

WAAS CH 61299 W28A	APP CRS 275°	Rwy Idg TDZE 998 Apt Elev 1026	9000
--	------------------------	--	-------------

For uncompensated Baro-VNAV systems, LNAV/VNAV NA below -7°C (20°F) or above 54°C (130°F). DME/DME RNP-0.3 NA. Simultaneous close parallel approach authorized with ILS PRM and RNAV PRM Rwy 26R or 26L or 27R or 27L, or Rwy 26R and 27R, or Rwy 26R and 27L, or Rwy 26L and 27R, or Rwy 26L and 27L. Use of FD or AP providing RNAV track guidance required during simultaneous operations. Dual VHF Comm required. See additional requirements on AAUP.

ALSF-2
MISSED APPROACH: Climb to 1500 then climbing left turn to 3000 direct SCARR and hold.

D-ATIS ARR 119.65 DEP 125.55	ATLANTA APP CON 127.9 379.9	ATLANTA TOWER 8L-26R 8R-26L 9L-27R 9R-27L 10-28 RWYS 119.1 125.325 123.85 119.3 119.5 254.4 PRM 133.425	ALL RWYS 121.9 121.75 121.65 254.4	GND CON 9L-27R, 9R-27L 10-28 RWYS 121.75 121.65 254.4
--	---------------------------------------	--	--	--

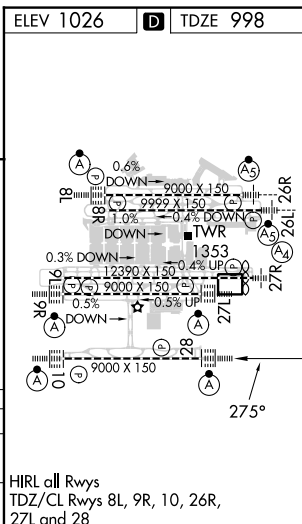


SE-4, 28 NOV 2024 to 26 DEC 2024

SE-4, 28 NOV 2024 to 26 DEC 2024

RADAR REQUIRED

ELEV 1026	D TDZE 998			
1500	3000	SCARR		
↑	↘	△		
CATEGORY	A	B	C	D
LPV DA	1198/18		200 (200-½)	
LNAV/VNAV DA	1250/24		252 (300-½)	



ATLANTA, GEORGIA
Orig-A 12OCT17
33°38'N-84°26'W
HARTSFIELD/JACKSON ATLANTA INTL (ATL)
RNAV (GPS) PRM Y RWY 28 (SIMULTANEOUS CLOSE PARALLEL)