

WIGLE THREE DEPARTURE (RNAV)

AL-26 (FAA)

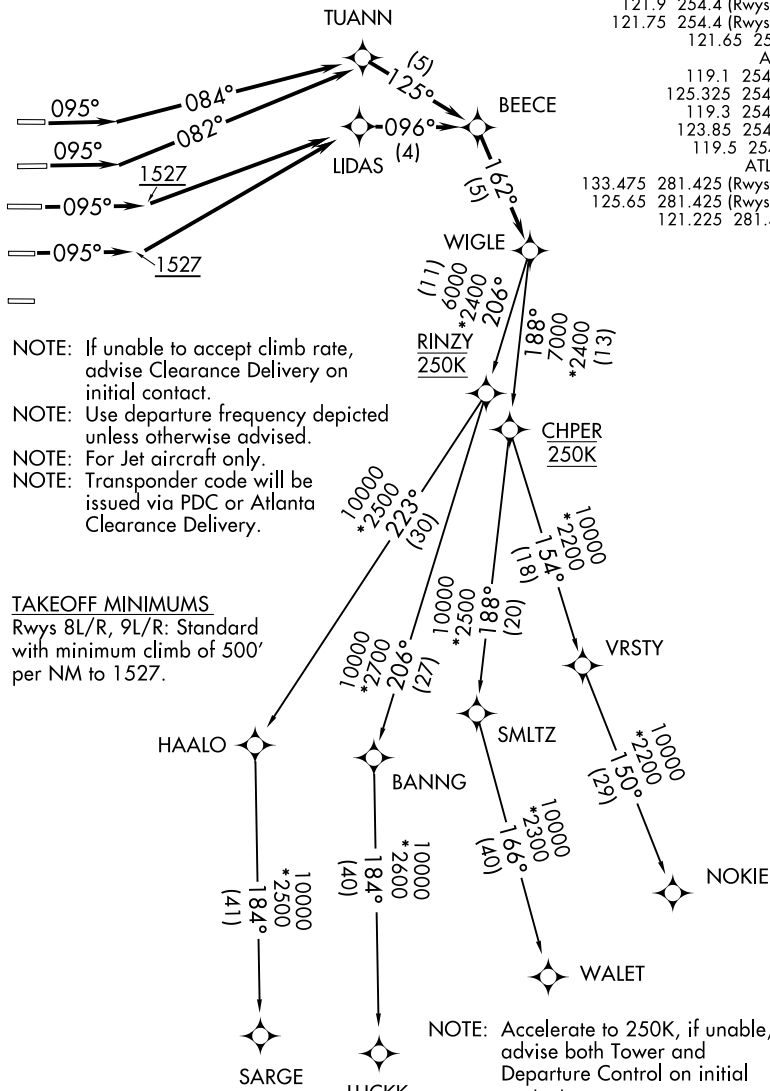
ATLANTA, GEORGIA

TOP ALTITUDE:
10000

RNAV 1 - DME/DME/IRU or GPS.
RADAR required for non-GPS equipped aircraft.

D-ATIS 125.55
CLNC DEL 118.1
CPDLC
GND CON

121.9 254.4 (Rwys 8L-26R, 8R-26L)
121.75 254.4 (Rwys 9L-27R, 9R-27L)
121.65 254.4 (Rwy 10-28)
ATLANTA TOWER
119.1 254.4 (Rwy 8L-26R)
125.325 254.4 (Rwy 8R-26L)
119.3 254.4 (Rwy 9R-27L)
123.85 254.4 (Rwy 9L-27R)
119.5 254.4 (Rwy 10-28)
ATLANTA DEP CON
133.475 281.425 (Rwys 8L-26R, 8R-26L)
125.65 281.425 (Rwys 9L-27R, 9R-27L)
121.225 281.425 (Rwy 10-28)



SE-4, 28 NOV 2024 to 26 DEC 2024

SE-4, 28 NOV 2024 to 26 DEC 2024

(CONTINUED ON FOLLOWING PAGE)

NOTE: Chart not to scale.

WIGLE THREE DEPARTURE (RNAV)

ATLANTA, GEORGIA



DEPARTURE ROUTE DESCRIPTION
SEE ADDITIONAL REQUIREMENTS ON AAUP

TAKEOFF RUNWAY 8L: Climb on heading 095° to intercept course 084° to TUANN, then on depicted route to WIGLE, thence. . . .

TAKEOFF RUNWAY 8R: Climb on heading 095° to intercept course 082° to TUANN, then on depicted route to WIGLE, thence. . . .

TAKEOFF RUNWAYS 9L/R: Climb on heading 095° to 1527, then direct LIDAS, then on depicted route to WIGLE, thence. . . .

. . . .(transition). Maintain 10000. Expect clearance to filed altitude 10 minutes after departure.

LUCKK TRANSITION (WIGLE3.LUCKK)

NOKIE TRANSITION (WIGLE3.NOKIE)

SARGE TRANSITION (WIGLE3.SARGE)

WALET TRANSITION (WIGLE3.WALET)

SE-4, 28 NOV 2024 to 26 DEC 2024

SE-4, 28 NOV 2024 to 26 DEC 2024