

WAAS CH <b>70720</b> <b>W17A</b>	APP CRS <b>171°</b>	Rwy Idg <b>5002</b> TDZE <b>348</b> Apt Elev <b>352</b>
--	------------------------	---

# RNAV (GPS) RWY 17

AUGUSTA STATE (AUG)

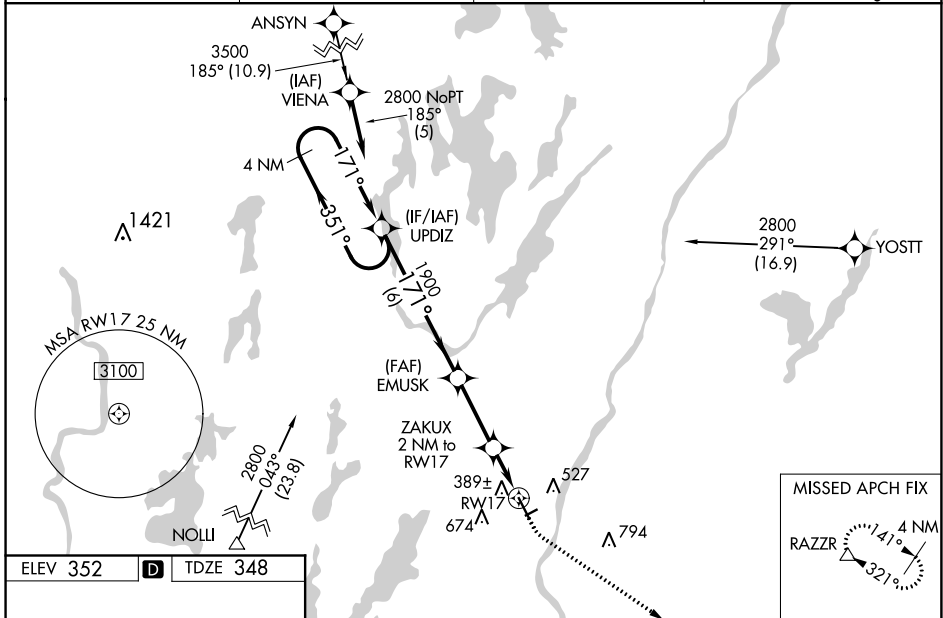
RNP APCH - GPS.

**⚠** For inop MALSR, increase LNAV/VNAV all Cats visibility to 1 mile. For inop MALSR when using Waterville altimeter setting, increase LNAV/VNAV all Cats visibility to 1½ mile. VDP and Baro-VNAV NA with Waterville altimeter setting. When local altimeter setting not received, use Waterville altimeter setting: increase LPV DA to 583 feet, LNAV/VNAV DA to 710 feet, and visibility LNAV/VNAV all Cats ½ SM; increase all MDA 40 feet and visibility LNAV Cats C and D ½ SM, and Circling Cat D ¼ SM. For uncompensated Baro-VNAV systems, LNAV/VNAV NA below -30°C or above 41°C. Circling Rwy 8, 26 NA at night.



**MISSED APPROACH:**  
Climb to 800 then climbing left turn to 3000 direct RAZZR and hold.

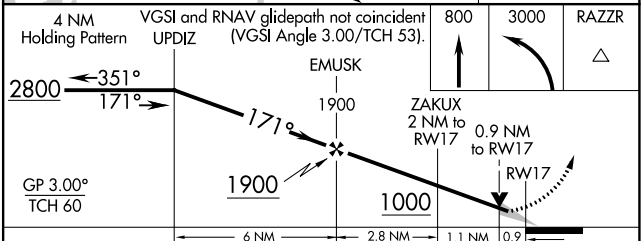
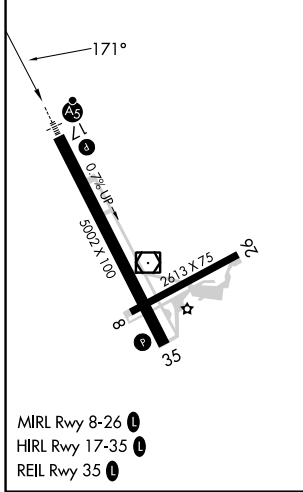
ASOS <b>118.325</b>	PORTLAND APP CON * <b>128.35 299.2</b>	CLNC DEL <b>119.95 299.2</b>	UNICOM <b>123.0 (CTAF) 0</b>
------------------------	---	---------------------------------	---------------------------------



NE-1, 28 NOV 2024 to 26 DEC 2024

NE-1, 28 NOV 2024 to 26 DEC 2024

ELEV 352	<b>D</b>	TDZE 348
----------	----------	----------



CATEGORY	A	B	C	D
LPV DA		548-½	200 (200-½)	
LNAV/VNAV DA		675-⅝	327 (400-⅝)	
LNAV MDA		640-½	292 (300-½)	
<b>C</b> CIRCLING	960-1 608 (700-1)	980-1 628 (700-1)	980-1¾ 628 (700-1¾)	1160-2½ 808 (900-2½)