

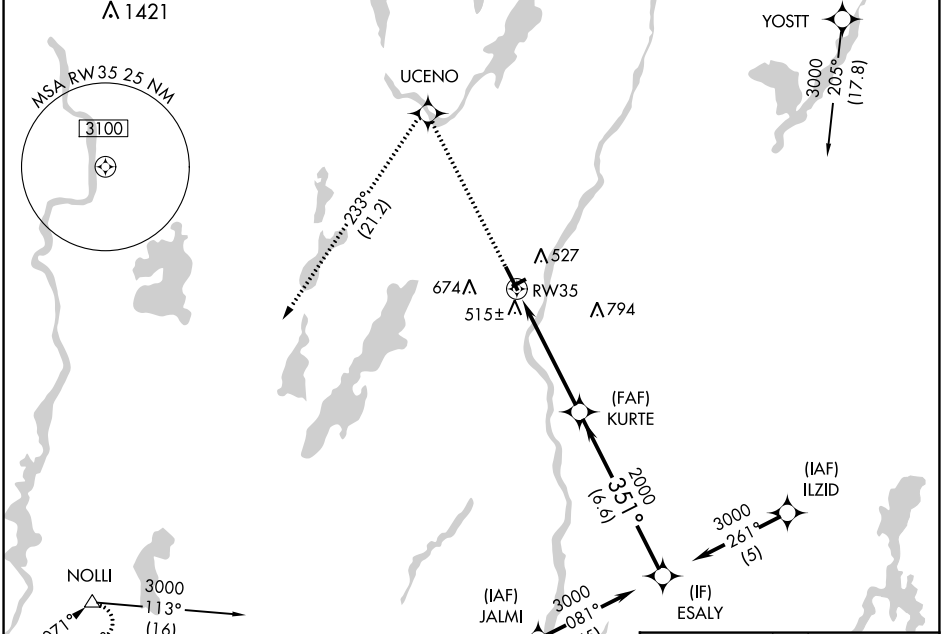
WAAS CH 70406 W35A	APP CRS 351°	Rwy Idg TDZE Apt Elev	5002 350 352
--	------------------------	-----------------------------	---

RNAV (GPS) RWY 35

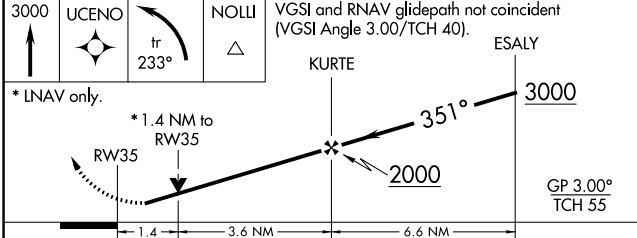
AUGUSTA STATE (AUG)

RNP APCH.	MISSED APPROACH: Climb to 3000 direct UCENO and left turn on track 233° to NOLLI and hold.
<p>⚠ Circling to Rwy 26 NA at night. Rwy 35 helicopter visibility reduction below 3/4 SM NA. ⚠ For uncompensated Baro-VNAV systems, LNAV/VNAV NA below -15°C or above 54°C.</p>	

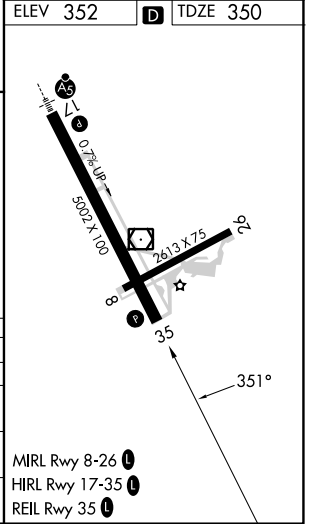
ASOS 118.325	PORTLAND APP CON * 128.35 299.2	CLNC DEL 119.95 299.2	UNICOM 123.0 (CTAF)
------------------------	---	---------------------------------	-------------------------------



ELEV 352		TDZE 350
----------	--	----------



CATEGORY	A	B	C	D
LPV DA	610-1 260 (300-1)			
LNAV/VNAV DA	850-1 500 (500-1 3/4)			
LNAV MDA	840-1	490 (500-1)	840-1 3/4 490 (500-1 3/4)	840-1 1/2 490 (500-1 1/2)
CIRCLING	880-1 3/4 528 (600-1 3/4)	980-1 3/4 628 (700-1 3/4)	1160-2 1/2 808 (900-2 1/2)	



NE-1, 28 NOV 2024 to 26 DEC 2024

NE-1, 28 NOV 2024 to 26 DEC 2024