

APP CRS
095°
 Rwy Idg **3844**
 TDZE **154**
 Apt Elev **160**

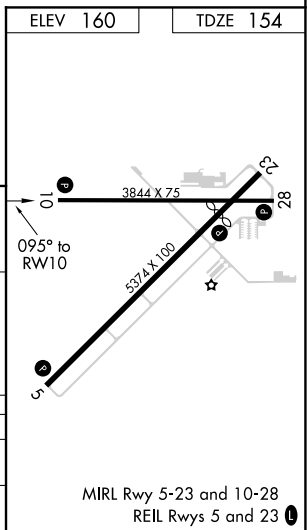
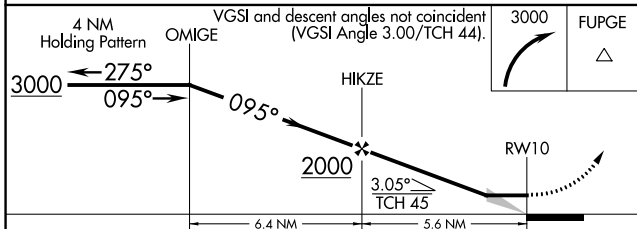
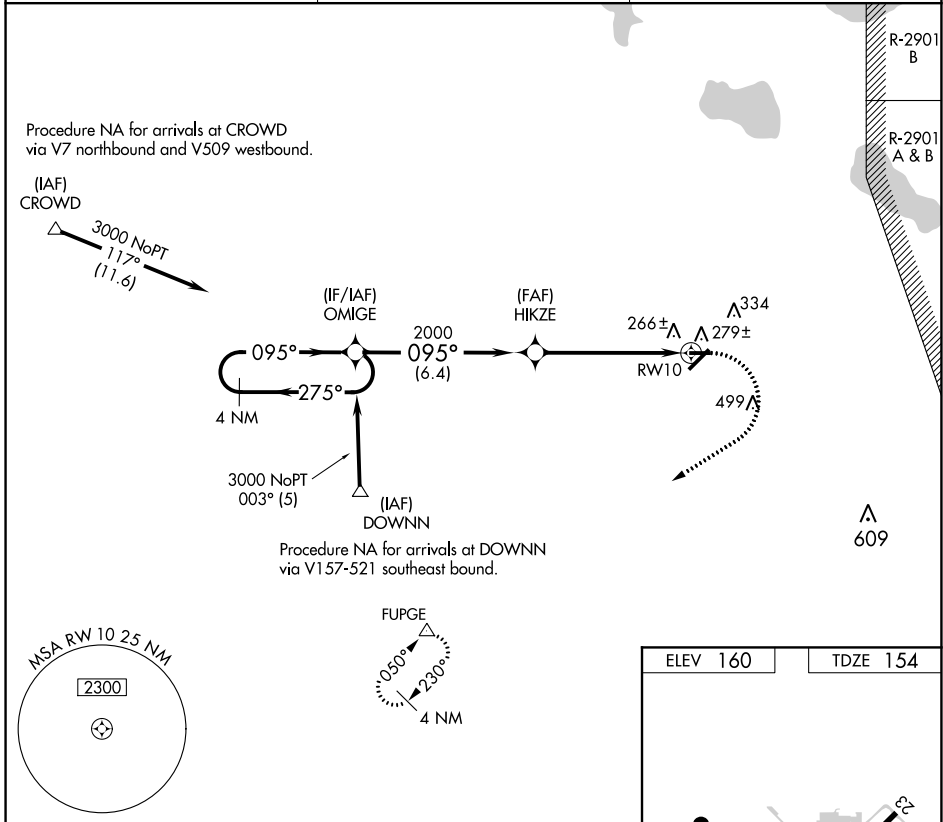
RNAV (GPS) RWY 10

AVON PARK EXEC (AVO)

⚠ DME/DME RNP-0.3 NA. Rwy 5,10,23,28 helicopter visibility reduction below
NA 1 SM NA. When local altimeter setting not received, use Orlando Intl altimeter setting; increase all MDA 140 feet. Procedure NA at night.

MISSED APPROACH: Climbing right turn 3000 direct FUPGE and hold.

AWOS-3 **118.725** MIAMI CENTER ★ **134.55 257.7** UNICOM **122.8** (CTAF) **0**



CATEGORY	A	B	C	D
LNVA MDA	640-1	486 (500-1)		NA
CIRCLING	680-1 520 (600-1)	840-1 680 (700-1)		NA

SE-3, 28 NOV 2024 to 26 DEC 2024

SE-3, 28 NOV 2024 to 26 DEC 2024