

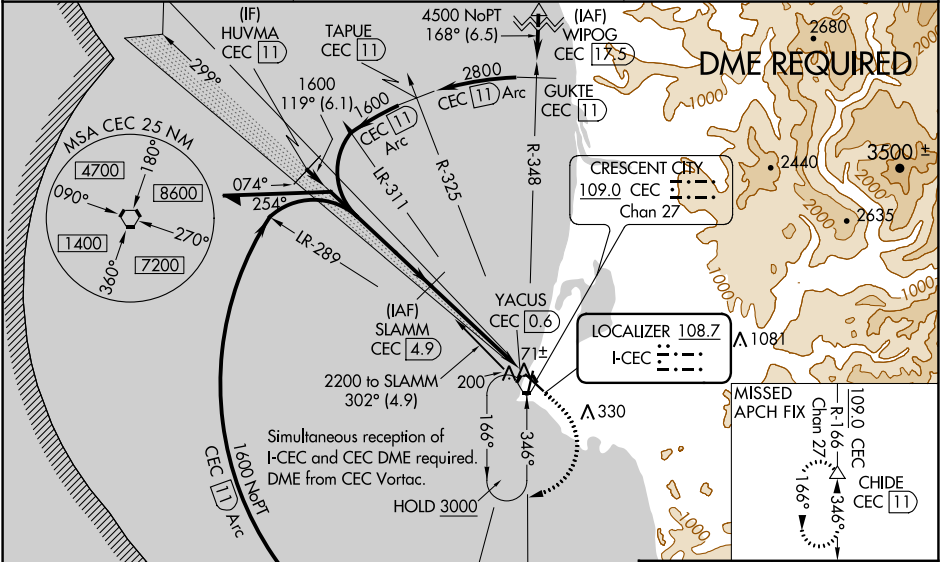
| | | | |
|---------------------------|------------------------|-----------------------------|---------------------------------------|
| LOC I-CEC 108.7 | APP CRS 119° | Rwy Idg TDZE Apt Elev | 5002 60 61 |
|---------------------------|------------------------|-----------------------------|---------------------------------------|

ILS or LOC RWY 12
JACK MC NAMARA FLD (CEC)

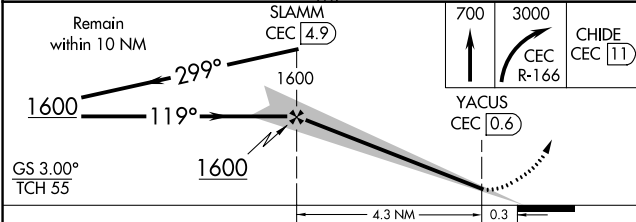
NA DME required. S-ILS 12: ½ mile visibility authorized with use of FD or AP or HUD to DA. Inop table does not apply to S-ILS 12, except with use of FD or AP or HUD to DA. For inop MALS, increase S-LOC 12 all Cats visibility ¼ mile. When local altimeter setting not received, use Brookings altimeter setting and increase DA to 407 feet and all MDA 100 feet; increase S-LOC 12 Cat C/D, and Circling Cat D visibilities ¼ mile. For inop MALS, when using Brookings altimeter setting, increase S-ILS 12 all Cats visibility to 1 mile. Night Landing: Rwy 36 operational VGSi required, remain on or above VGSi glidepath until threshold. Circling to Rwy 18, 30 NA at night.

MALS
MISSED APPROACH:
Climb to 700 then climbing right turn to 3000 on CEC VORTAC R-166 to CHIDE/CEC 11 DME and hold, continue climb-in-hold to 3000.

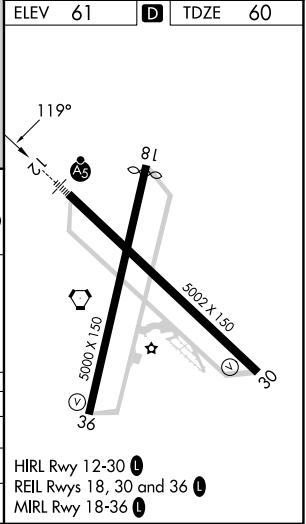
| | | |
|------------------------|---------------------------------------|-------------------------------|
| ASOS 119.925 | SEATTLE CENTER 124.85 306.3 | UNICOM 122.8 (CTAF) |
|------------------------|---------------------------------------|-------------------------------|



| | | |
|---------|----------|---------|
| ELEV 61 | D | TDZE 60 |
|---------|----------|---------|



| CATEGORY | A | B | C | D |
|-------------------|-------|-------------|------------------------|----------------------|
| S-ILS 12 | | 310-¾ | 250 (300-¾) | |
| S-LOC 12 | | 380-¾ | 320 (400-¾) | |
| C CIRCLING | 540-1 | 479 (500-1) | 640-1½ 579 (600-1½) | 640-2 579 (600-2) |



SW-2, 28 NOV 2024 to 26 DEC 2024

SW-2, 28 NOV 2024 to 26 DEC 2024