

VORTAC CEC <b>109.0</b> Chan <b>27</b>	APP CRS <b>131°</b>	Rwy Idg <b>5002</b> TDZE <b>60</b> Apt Elev <b>61</b>
--	------------------------	---

# VOR/DME RWY 12

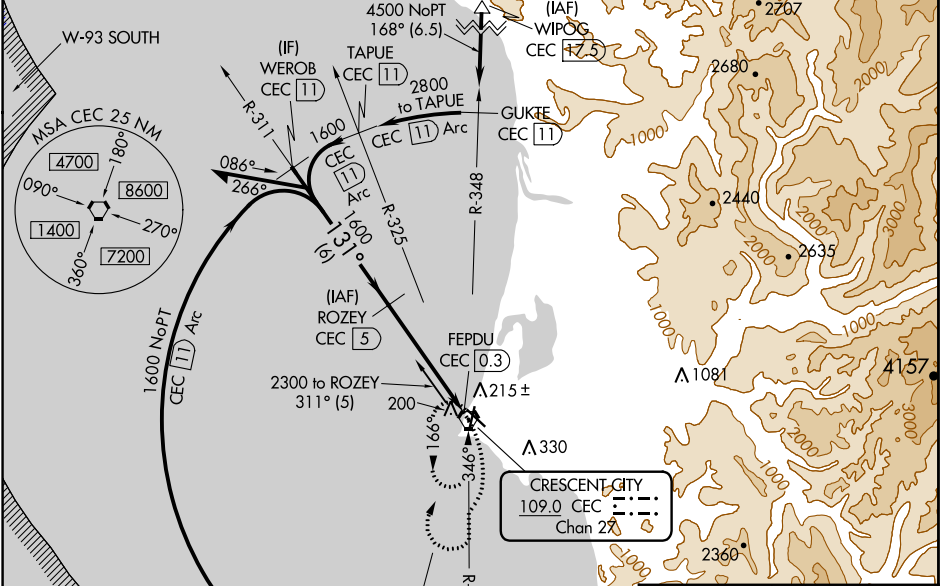
JACK MC NAMARA FLD (CEC)

**▽** VDP NA with Brookings altimeter setting. When local altimeter setting not received, use Brookings altimeter setting and increase all MDA 100 feet; increase S-12 Cat C/D, and Circling Cat D visibility ¼ mile, and Circling Cat C visibility ½ mile. For inop MALSRS, increase S-12 Cats A/B visibility to 1 mile, Cats C/D visibility to 1½ mile. For inop MALSRS when using Brookings altimeter setting, increase S-12 Cats A/B visibility to 1 mile, Cats C/D visibility to 1½ mile. Night Landing: Rwy 18, 30 NA. Night Landing: Rwy 36 operational VGSJ required, remain on or above VGSJ glidepath until threshold.

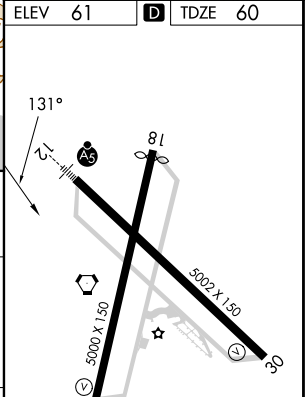
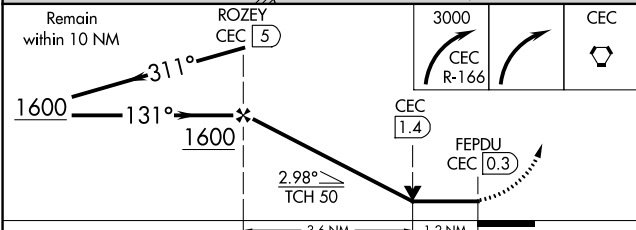
**MALSRS**

**MISSED APPROACH:**  
Climbing right turn to 3000 on CEC VORTAC R-166 then right turn direct CEC VORTAC and hold.

ASOS <b>119.925</b>	SEATTLE CENTER <b>124.85 306.3</b>	UNICOM <b>122.8 (CTAF)</b>
------------------------	---------------------------------------	-------------------------------



ELEV 61	<b>D</b> TDZE 60
---------	------------------



CATEGORY	A	B	C	D
S-12	480-¾ 420 (500-¾)		480-1 420 (500-1)	
<b>C</b> CIRCLING	540-1 479 (500-1)		640-1½ 579 (600-1½)	640-2 579 (600-2)

HIRL Rwy 12-30 **①**  
REIL Rwys 18, 30 and 36 **①**  
MIRL Rwy 18-36 **①**

SW-2, 28 NOV 2024 to 26 DEC 2024

SW-2, 28 NOV 2024 to 26 DEC 2024