

COCOA BEACH, FLORIDA

# ILS or LOC RWY 21

LOC I-PKC <b>110.9</b>	APCH CRS <b>207°</b>	Rwy ldg TDZE Arpt Elev <b>9008</b> <b>7</b> <b>8</b>
---------------------------	-------------------------	---

[USAF]

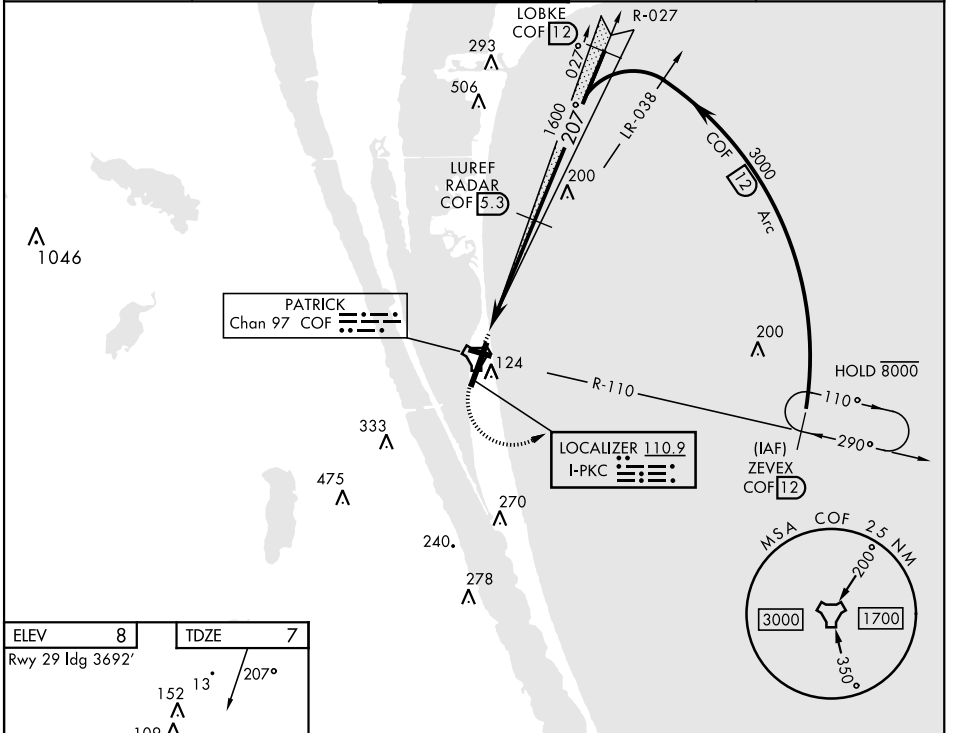
PATRICK SFB (KCOF)

DME required

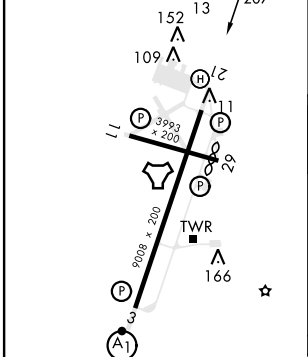
▼ \* When circling to Rwy 29 at night, operational VGSI required, remain on or above VGSI glidepath until threshold. Circling not authorized NW of Rwy 3-21.

MISSED APPROACH: Climb to 900, then climbing left turn to 3000 and intercept COF TACAN R-110 direct ZEVEX/12 DME and hold.

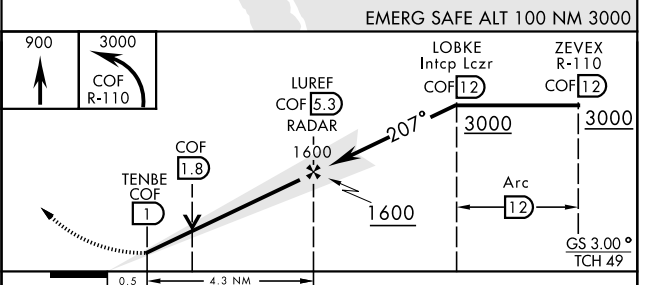
ATIS ★ <b>119.175 273.5</b>	ORLANDO APP CON★ <b>132.65 281.425</b>	TOWER★ <b>133.75 269.375</b>	GND CON★ <b>124.35 335.8</b>	CLNC DEL★ <b>118.4 289.4</b>
--------------------------------	---	---------------------------------	---------------------------------	---------------------------------



ELEV <b>8</b>	TDZE <b>7</b>
Rwy 29 ldg 3692'	



HIRL Rwy 3-21	MIRL Rwy 11-29
FAF to MAP 4.3 NM	
Knots	60 90 120 150 180
Min:Sec	4:18 2:52 2:09 1:43 1:26



EMERG SAFE ALT 100 NM 3000				
CATEGORY	A	B	C	D
S-ILS 21	207/40		200	(200-34)
S-LOC 21	460/55	453 (500-1)	460-1 4/8 453 (500-1 3/8)	560-2
☑ CIRCLING *	520-1	512 (600-1)	540-1 1/2 532 (600-1 1/2)	552 (600-2)

COCOA BEACH, FLORIDA

28° 14' N-80° 37' W

PATRICK SFB (KCOF)

Amdt 3 13JUN24

# ILS or LOC RWY 21

SE-3, 28 NOV 2024 to 26 DEC 2024

SE-3, 28 NOV 2024 to 26 DEC 2024