

COCOA BEACH, FLORIDA

# ILS or LOC RWY 3

LOC I-COF <b>109.1</b>	APCH CRS <b>027°</b>	Rwy ldg TDZE Arpt Elev <b>9008</b> <b>5</b> <b>8</b>
---------------------------	-------------------------	---

[USAF]

PATRICK SFB (KCOF)

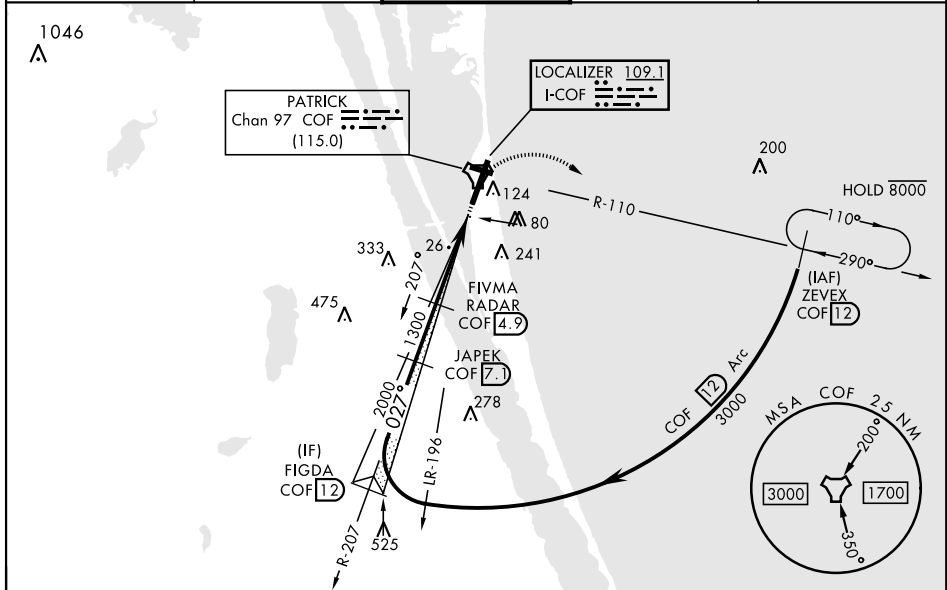
DME required

▼ \* When ALS inop, increase RVR to 40 and vis to 3/4 mile.  
 \*\* When ALS inop, increase CAT AB RVR to 55, vis to 1 mile;  
 CAT CD vis to 1 3/8 miles.  
 \*\*\* Circling not authorized NW of Rwy 3-21. When Rwy 29 VGSI inop, circling to Rwy 29 NA at night. When circling to Rwy 29 at night, operational VGSI required, remain on or above VGSI glidepath until threshold.

ALSF-1

MISSED APPROACH: Climb to 600, then climbing right turn to 3000 and intercept COF TACAN R-110 direct ZEVEX/COF 12 DME and hold.

ATIS ★ <b>119.175 273.5</b>	ORLANDO APP CON★ <b>132.65 281.425</b>	TOWER ★ <b>133.75 269.375</b>	GND CON ★ <b>124.35 335.8</b>	CLNC DEL ★ <b>118.4 289.4</b>
--------------------------------	---	----------------------------------	----------------------------------	----------------------------------



ELEV 8 TDZE 5

Rwy 29 ldg 3692'

FAF to MAP 3.4 NM

Knots	60	90	120	150	180
Min:Sec	3:24	2:16	1:42	1:22	1:08

EMERG SAFE ALT 100 NM 3000

ZEVEX COF 12	FIGDA Intcp COF 12	JAPEK COF 7.1	FIVMA COF 4.9	GEPRE COF 1.5	
3000	3000	2000	1300	1300	
Arc 12		GS 3.00° TCH 51	3.4 NM		
CATEGORY		A	B	C	D
S-ILS 3 *	205/24		200	(200-1/2)	
S-LOC 3 **	460/24	455 (500-1/2)	460/45	455 (500-7/8)	
*** CIRCLING	520-1	512 (600-1)	540-1 1/2	552 (600-2)	
			532 (600-1 1/2)		

SE-3, 28 NOV 2024 to 26 DEC 2024

SE-3, 28 NOV 2024 to 26 DEC 2024

COCOA BEACH, FLORIDA  
Amdt 3 02NOV23

28° 14' N-80° 37' W

PATRICK SFB (KCOF)

# ILS or LOC RWY 3