

OCEAN FOUR DEPARTURE

[USAF]

COCOA BEACH, FLORIDA

ATIS ★
 119.175 273.5
 CLNC DEL ★
 118.4 289.4
 GND CON ★
 124.35 335.8
 TOWER ★
 133.75 269.375
 ORLANDO DEP CON ★
 132.65 281.425

DME required

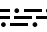
Rwy	Knots	60	120	180	240	300	360
03/21	V/V(fpm)	210	420	630	840	1050	1260

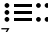
Minimum Climb Rate to 500

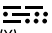
TOP ALTITUDE
2000

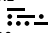
ORMOND BEACH
 112.6 OMN 
 Chan 73

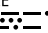
ORLANDO
 112.2 ORL 
 Chan 59

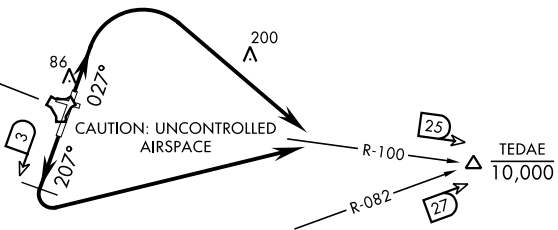
PATRICK
 Chan 97 COF 
 (115.0)

LAKELAND
 116.0 LAL 
 Chan 107

MELBOURNE
 115.85 MLB 
 Chan 105(Y)

TREASURE
 117.3 TRV 
 Chan 120

PAHOKEE
 115.4 PHK 
 Chan 101



NOTE: Chart not to scale.

DEPARTURE ROUTE DESCRIPTION

Expect clearance to filed altitude/flight level 10 minutes after departure.

TAKEOFF RWY 03: Climb on hdg 027°, then turn right to intercept COF TACAN R-100 to cross TEDAE (COF 25 DME/MLB VOR/DME 27 DME) at or below 10,000, maintain 2000 or higher as assigned.

TAKEOFF RWY 21: Climb on hdg 207° to COF TACAN 3 DME, then left turn to intercept COF TACAN R-100 to cross TEDAE (COF 25 DME/MLB VOR/DME 27 DME) at or below 10,000, maintain 2000 or higher as assigned.