

COCOA BEACH, FLORIDA

# RNAV (GPS) RWY 21

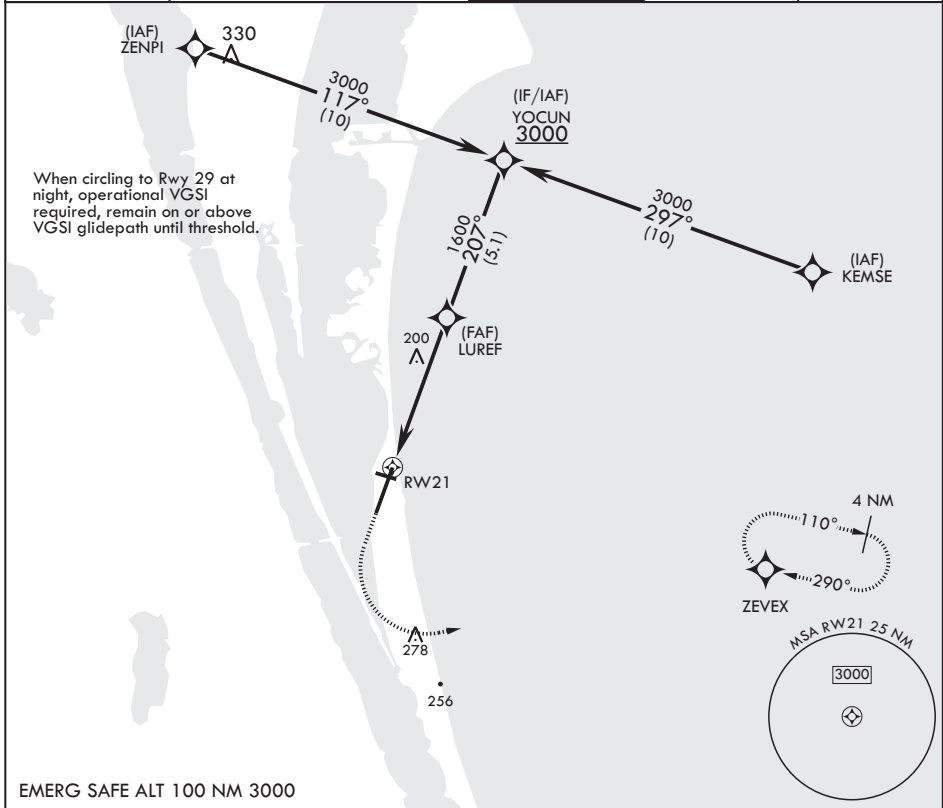
APCH CRS	Rwy Idg	9008
207°	TDZE	7
	Arprt Elev	8

(USAF)

PATRICK SFB (KCOF)

RNP APCH-GPS	MISSED APPROACH: Climb to 900 then climbing left turn to 3000 direct ZEVEX and hold.
* Circling NA NW of RWY 3-21.	

ATIS*	ORLANDO APP CON/DEP CON*	TOWER*	GND CON*	CLNC DEL*
119.175 273.5	132.65 281.425	133.75 269.375	124.35 335.8	118.4 289.4



EMERG SAFE ALT 100 NM 3000

	<p>YOCUN 3000</p> <p>Rwy 29 Idg 3692' 207° TDZE 7</p>				
CATEGORY	A	B	C	D	E
LNAV MDA	460/55	453 (500-1)	460-1½	453 (500-1%)	
CIRCLING*	520-1	512 (600-1)	540-1½ 532 (600-1½)	560-2 552 (600-2)	580-2 572 (600-2)

COCOA BEACH, FLORIDA

28°14'N - 80°37'W

PATRICK SFB (KCOF)

Amdt 1 02NOV23

# RNAV (GPS) RWY 21

SE-3, 28 NOV 2024 to 26 DEC 2024

SE-3, 28 NOV 2024 to 26 DEC 2024