

BANGOR, MAINE

HI-ILS Z or LOC Z RWY 15

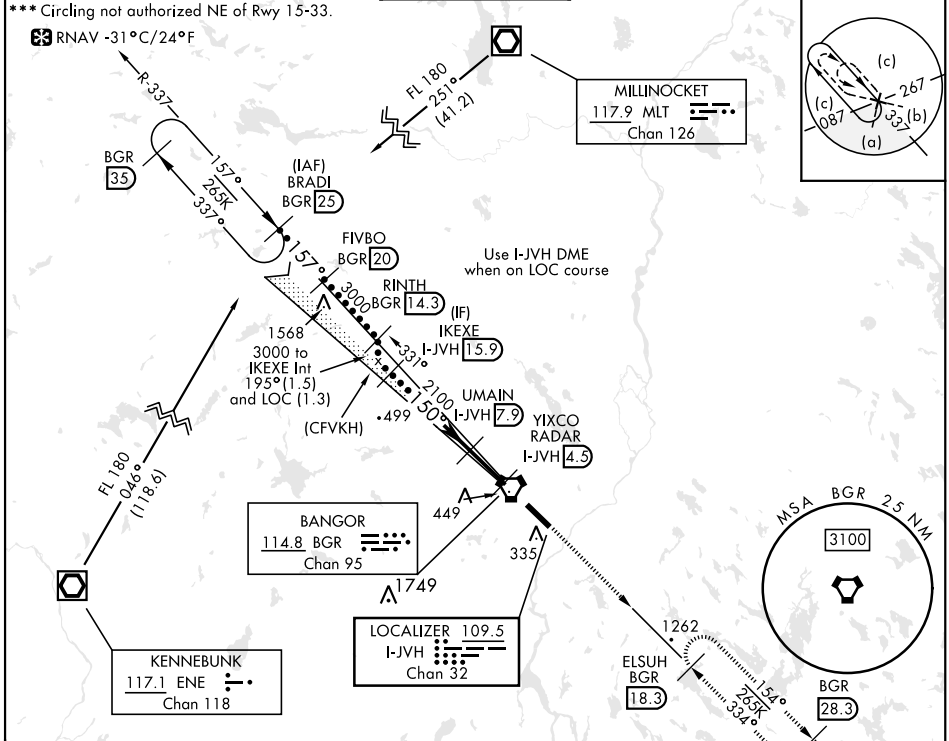
LOC/DME I-JVH 109.5 Chan 32	APCH CRS 150°	Rwy ldg 11,440 TDZE 192 Arprt Elev 192
---	-------------------------	---

AL-39 [USAF]

BANGOR INTL (KBGR)

DME required.	ALSIF-2	MISSED APPROACH: Climb to 3000 via heading 150° and BGR VORTAC R-154 to ELSUH (R-154/18.3 DME) and hold.
<p>▼ * When ALS inop, increase CAT E RVR to 40.</p> <p>** When ALS inop, increase CAT CDE vis to 1 1/2 miles.</p>		

ATIS 127.75	APP CON 118.925 239.3	TOWER 120.7 233.7	GND CON 121.9 348.6	ASR
-----------------------	---------------------------------	-----------------------------	-------------------------------	-----

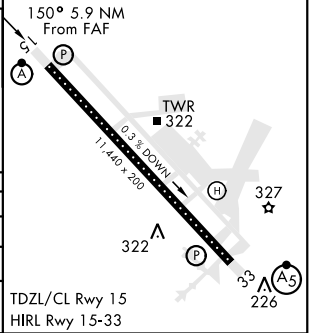


EMERG SAFE ALT 100 NM 7500

BRADI R-337 BGR [25]	FIVBO BGR [20]	RINTH BGR [14.3] (CFVKH)	IKEXE I-JVH [15.9]	UMAIN I-JVH [7.9]	YIXCO I-JVH [4.5]	ELSUH BGR [18.3]
Use I-JVH DME when on LOC course				3000	hdg 150°	BGR R-154
12,000	8,000	5,000	3,000	2,100	1,000	300
VGSI and ILS GS not coincident		GS 3.00° TCH 50				

ELEV 192	TDZE 192
----------	----------

CATEGORY	C	D	E
S-ILS 15*	392/18	200	(200-1/2)
S-LOC 15**	660/50	468	(500-1)
CIRCLING***	740-1 1/2 548 (600-1 1/2)	820-2 628 (700-2)	880-2 1/2 688 (700-2 1/2)



BANGOR, MAINE

44°48'N-68°50'W

BANGOR INTL (KBGR)

Amrd 2 02DEC21

HI-ILS Z or LOC Z RWY 15

NE-1, 28 NOV 2024 to 26 DEC 2024

NE-1, 28 NOV 2024 to 26 DEC 2024