

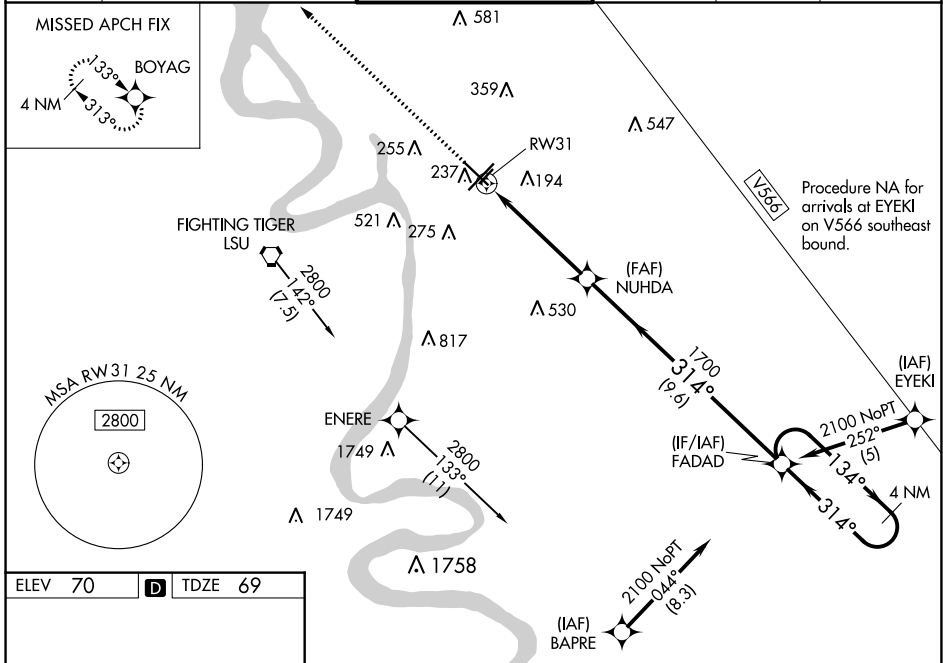
WAAS CH 90125 W31A	APP CRS 314°	Rwy Idg 6094 TDZE 69 Apt Elev 70
--	------------------------	---

RNAV (GPS) RWY 31

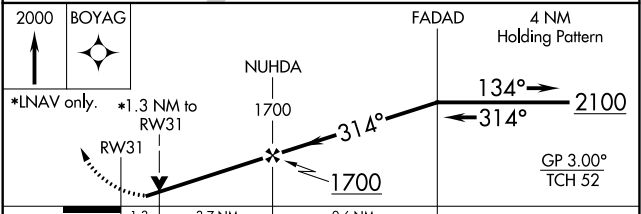
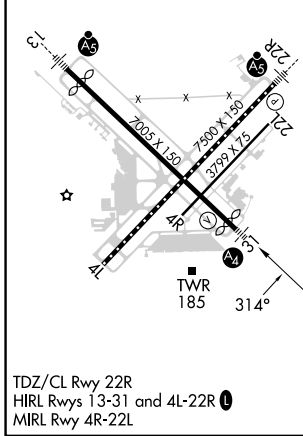
BATON ROUGE METRO, RYAN FLD (BTR)

RNP APCH.	MALS	MISSED APPROACH: Climb to 2000 direct BOYAG and hold.
<p>▼ For uncompensated Baro-VNAV systems, LNAV/VNAV NA below -5°C (23°F) or above 54°C (130°F). For inop MALS, increase LNAV Cat C/D visibility to 1½ mile. When local altimeter setting not received, use Hammond altimeter setting and increase all DA 91 feet and MDA 100 feet, increase LPV and LNAV/VNAV all Cats visibility ¾ mile, LNAV Cats C and D visibility ¾ mile, and Circling Cat C and D visibility ¼ mile. Baro-VNAV and VDP NA when using Hammond altimeter setting. Rwy 31 helicopter visibility reduction below ¾ SM NA.</p>		

ATIS 125.2	BATON ROUGE APP CON ★ 120.3 278.3	RYAN TOWER ★ 118.45 (CTAF) 257.8	GND CON 121.9	CLNC DEL 119.4	UNICOM 122.95
----------------------	---	--	-------------------------	--------------------------	-------------------------



ELEV 70	D	TDZE 69
----------------	----------	----------------



CATEGORY	A	B	C	D
LPV DA		366-¾	297 (300-¾)	
LNAV/VNAV DA		446-¾	377 (400-¾)	
LNAV MDA	520-¾	451 (500-¾)	520-1	451 (500-1)
C CIRCLING	560-1 490 (500-1)	660-1 590 (600-1)	780-2 710 (800-2)	840-2½ 770 (800-2½)

SC-4, 28 NOV 2024 to 26 DEC 2024

SC-4, 28 NOV 2024 to 26 DEC 2024