

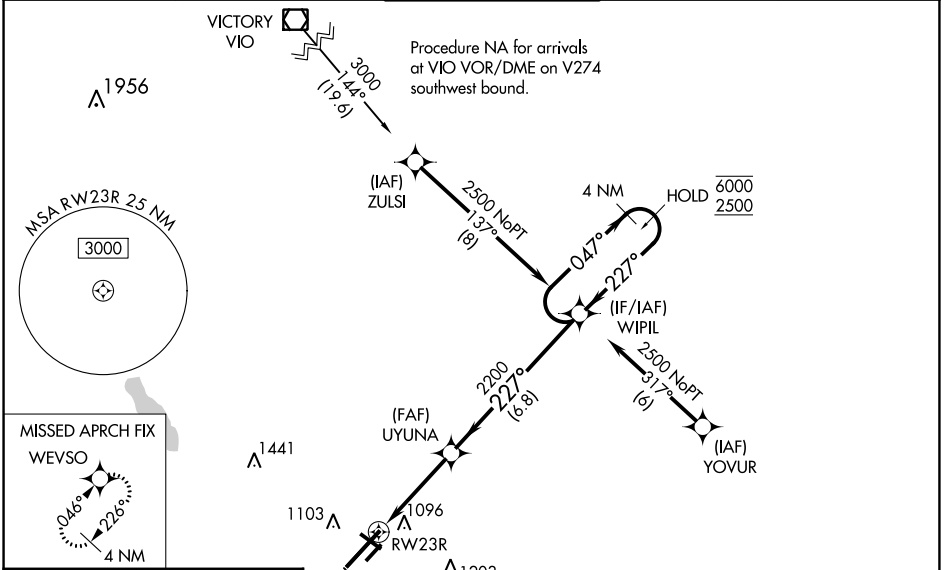
WAAS CH <b>56411</b> <b>W23A</b>	APP CRS <b>227°</b>	Rwy Idg <b>10004</b> TDZE <b>929</b> Apt Elev <b>952</b>
--	------------------------	--

# RNAV (GPS) RWY 23R

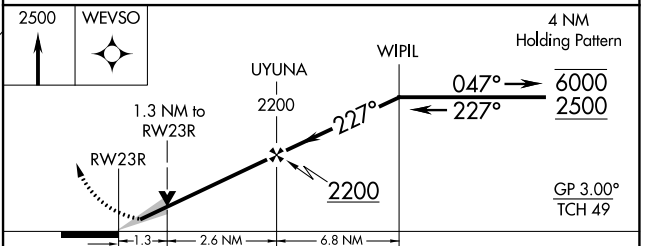
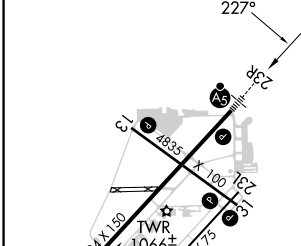
BATTLE CREEK EXEC AT KELLOGG FLD (BTL)

RNP APCH - GPS.			MISSED APPROACH: Climb to 2500 direct WEVSO and hold.
For uncompensated Baro-VNAV systems, LNAV/VNAV NA below -20°C or above 54°C. Circling to Rwy 5R, 23L and 31 NA at night. When local altimeter setting not received, use Grand Rapids altimeter setting: increase all LPV DA to 1236 feet and LNAV/VNAV DA to 1365 feet and visibility to RVR 5000 all Cats; increase all MDA 120 feet, LNAV Cats C and D visibility to 1¼ SM and Circling Cat C visibility to 2 SM and Cat D visibility to 2½ SM. For inop ALS when using Grand Rapids altimeter setting, increase LPV all Cats visibility to RVR 5000 and LNAV Cats C and D to visibility 1½ SM. Baro-VNAV and VDP NA when using Grand Rapids altimeter setting. *RVR 1800 authorized with use of FD or AP or HUD to DA.			

ATIS <b>128.325</b>	GREAT LAKES APP CON* <b>119.2 239.25</b>	BATTLE CREEK TOWER* <b>126.825</b> (CTAF)	GND CON <b>121.7</b>	UNICOM <b>122.95</b>
------------------------	---	--	-------------------------	-------------------------



ELEV 952	<b>D</b>	TDZE 929
----------	----------	----------



CATEGORY	A	B	C	D
LPV DA *		1129/24	200 (200-½)	
LNAV/VNAV DA		1258/32	329 (400-⅝)	
LNAV MDA	1380/24	451 (500-½)	1380/45	451 (500-⅞)
<input checked="" type="checkbox"/> CIRCLING	1420-1 468 (500-1)	1480-1 528 (600-1)	1520-1½ 568 (600-1½)	1520-2 568 (600-2)

HIRL Rwy 5L-23R   
MIRL Rwy 13-31 and 5R-23L   
REIL Rws 5L, 5R, 13, 23L and 31L

EC-1, 28 NOV 2024 to 26 DEC 2024

EC-1, 28 NOV 2024 to 26 DEC 2024