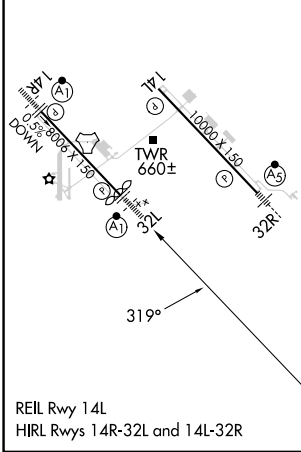
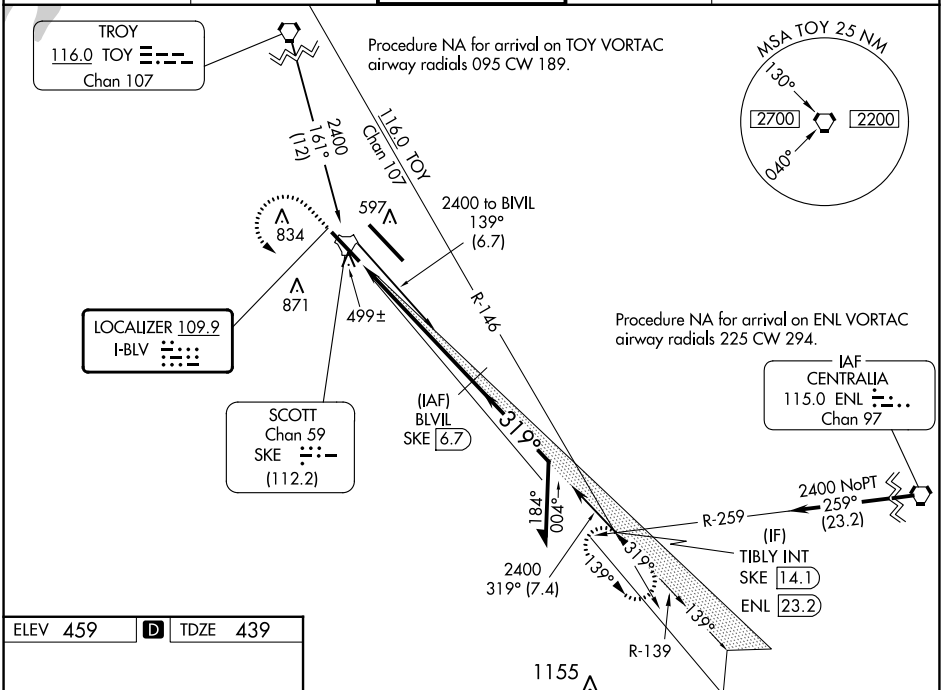


LOC I-BLV 109.9	APP CRS 319°	Rwy Idg 7822
		TDZE 439
		Apt Elev 459

ILS or LOC RWY 32L

SCOTT AFB/MIDAMERICA ST LOUIS (BLV)

DME required.		ALSF-1 	MISSED APPROACH: Climb to 1500 then climbing left turn to 2400 direct SKE TACAN and on SKE R-139 to TIBLY INT/ SKE 14.1 DME and hold.
For inop ALS, increase S-ILS 32L Cat E visibility to RVR 4000 and increase S-LOC 32L Cat C/D/E visibility to 1/2 SM. Procedure turn NA for Cat E aircraft.	DME from SKE TACAN. Simultaneous reception of I-BLV and SKE DME required.		
ASR *RVR 1800 authorized with use of FD or AP or HUD to DA.			
ATIS * 128.7 256.7	ST LOUIS APP CON 125.2 281.5	SCOTT TOWER 128.25 253.5	GND CON 119.2 275.8
			CLNC DEL 119.875 263.025



ELEV 459	D TDZE 439																				
1500 2400 SKE SKE R-139 TIBLY INT BLVIL SKE (6.7)	VGSI and ILS glidepath not coincident (VGSI Angle 3.00/TCH 50). Remain within 10 NM																				
2400 SKE (0.7) SKE (2)	2400 139° 319° 2400 GS 3.00° TCH 57																				
-1.4 NM 4.6 NM																					
CATEGORY S-ILS 32L * S-LOC 32L CIRCLING	<table border="1"> <tr> <th>A</th> <th>B</th> <th>C</th> <th>D</th> <th>E</th> </tr> <tr> <td colspan="5">639/24 200 (200-1/2)</td> </tr> <tr> <td>920/24</td> <td>481 (500-1/2)</td> <td colspan="3">920/50 481 (500-1)</td> </tr> <tr> <td>1000-1 541 (600-1)</td> <td>1120-1 661 (700-1)</td> <td>1240-2 1/4 781 (800-2 1/4)</td> <td>1240-2 1/2 781 (800-2 1/2)</td> <td>1240-2 3/4 781 (800-2 3/4)</td> </tr> </table>	A	B	C	D	E	639/24 200 (200-1/2)					920/24	481 (500-1/2)	920/50 481 (500-1)			1000-1 541 (600-1)	1120-1 661 (700-1)	1240-2 1/4 781 (800-2 1/4)	1240-2 1/2 781 (800-2 1/2)	1240-2 3/4 781 (800-2 3/4)
A	B	C	D	E																	
639/24 200 (200-1/2)																					
920/24	481 (500-1/2)	920/50 481 (500-1)																			
1000-1 541 (600-1)	1120-1 661 (700-1)	1240-2 1/4 781 (800-2 1/4)	1240-2 1/2 781 (800-2 1/2)	1240-2 3/4 781 (800-2 3/4)																	

EC-3, 28 NOV 2024 to 26 DEC 2024

EC-3, 28 NOV 2024 to 26 DEC 2024