

TACAN SKE Chan 59 (112.2)	APP CRS 322°	Rwy Idg TDZE Apt Elev	7822 439 459
--	------------------------	-----------------------------	---

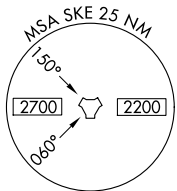
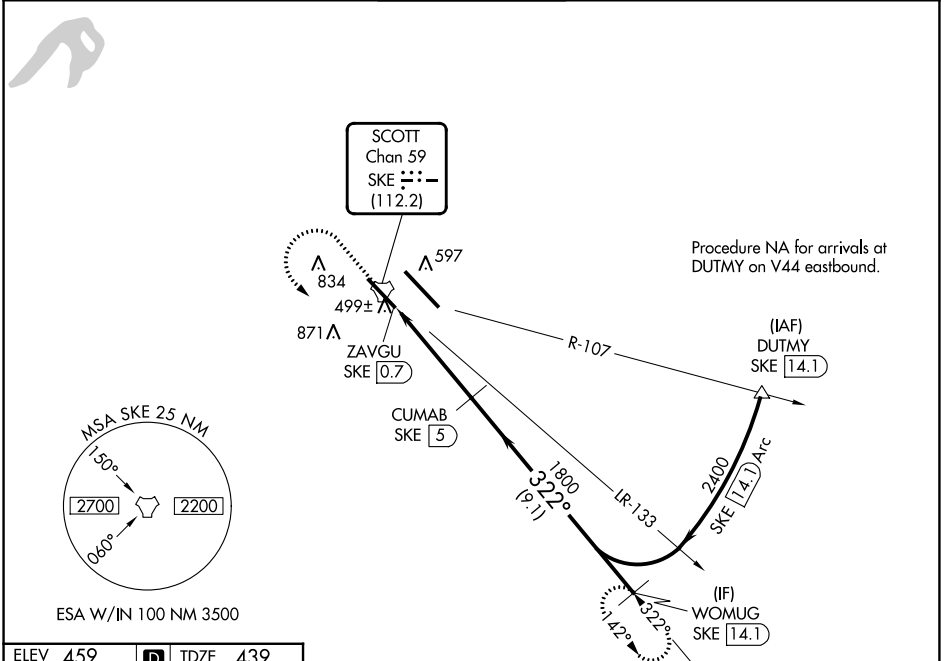
TACAN RWY 32L

SCOTT AFB/MIDAMERICA ST LOUIS (BLV)

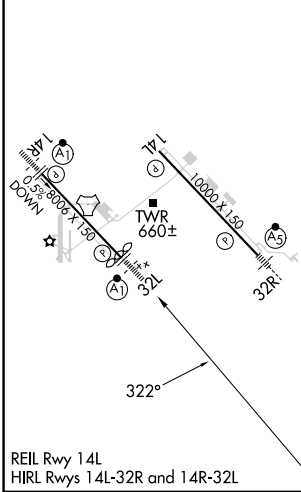
▲ For inop ALS, increase S-32L Cat C/D/E visibility to 1½ SM.

ALS-1 MISSED APPROACH: Climb to 1500 then climbing left turn to 2400 on SKE R-142 to WOMUG/14.1 DME and hold.

ATIS ★ 128.7 256.7	ST LOUIS APP CON 125.2 281.5	SCOTT TOWER 128.25 253.5	GND CON 119.2 275.8	CLNC DEL 119.875 263.025
------------------------------	--	------------------------------------	-------------------------------	------------------------------------



ELEV 459	D	TDZE 439
----------	----------	----------



1500	2400	WOMUG SKE [14.1]	VGSI and descent angles not coincident (VGSI Angle 3.00/TCH 50).		
↑	SKE R-142		CUMAB SKE [5]	2400	WOMUG SKE [14.1]
	ZAVGU SKE [0.7]	2.81° TCH 72	1800	322°	2400
	1.4 NM	3 NM	9.1 NM		
CATEGORY	A	B	C	D	E
S-32L	920/24	481 (500-½)	920/50	481 (500-1)	920/60 481 (500-1½)
<input checked="" type="checkbox"/> CIRCLING	1000-1 541 (600-1)	1120-1 661 (700-1)	1240-2¼ 781 (800-2¼)	1240-2½ 781 (800-2½)	1240-2¾ 781 (800-2¾)

EC-3, 28 NOV 2024 to 26 DEC 2024

EC-3, 28 NOV 2024 to 26 DEC 2024