

WAAS CH <b>86332</b> <b>W06A</b>	APP CRS <b>060°</b>	Rwy Idg TDZE Apt Elev	<b>4601</b> <b>2563</b> <b>2573</b>
--	------------------------	-----------------------------	---

# RNAV (GPS) RWY 6

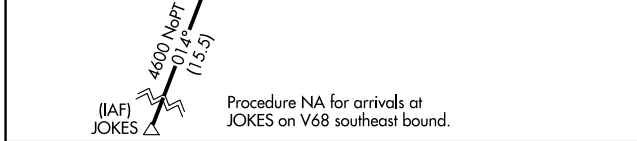
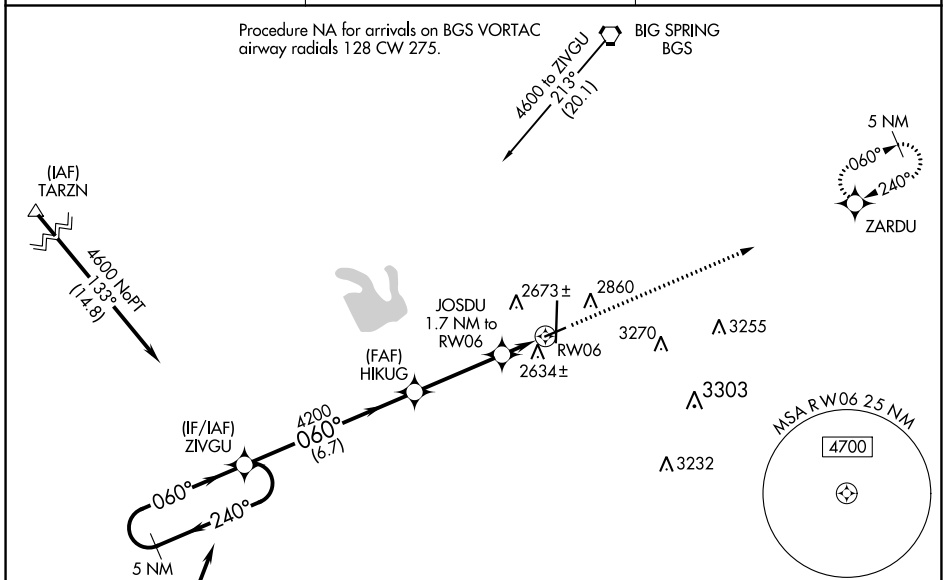
BIG SPRING/MC MAHON-WRINKLE (BPG)

RNP APCH.

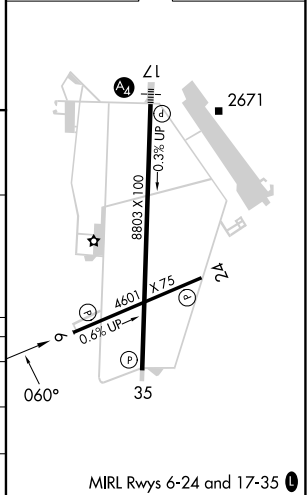
▼ For uncompensated Baro-VNAV systems, LNAV/VNAV NA below -20°C or above 54°C.  
 ▲ When local altimeter setting not received, use Midland Intl Air and Space Port altimeter setting and increase all DA 130 feet, all MDA 140 feet, and increase LPV all Cats visibility 3/8 mile and LNAV/VNAV all Cats visibility 1/2 mile. Baro-VNAV and VDP NA with Midland Intl Air and Space Port altimeter setting.

MISSED APPROACH: Climb to 4600 direct ZARDU and hold.

AWOS-3PT <b>118.025</b>	FORT WORTH CENTER <b>133.7 350.2</b>	UNICOM <b>122.8 (CTAF) 0</b>
----------------------------	---	---------------------------------



ELEV 2573	TDZE 2563
-----------	-----------



5 NM Holding Pattern	ZVIGU	VGSi and RNAV glidepath not coincident (VGSi Angle 3.00/TCH 40).	4600	ZARDU
GP 3.00° TCH 47	4200	HIKUG	JOSDU 1.7 NM to RW06	*LNAV only.
			*1 NM to RW06	RW06

CATEGORY	A	B	C	D
LPV DA	2763-3/4	200 (200-3/4)		NA
LNAV/VNAV DA	2813-3/4	250 (300-3/4)		NA
LNAV MDA	2900-1	337 (400-1)		NA

SC-2, 28 NOV 2024 to 26 DEC 2024

SC-2, 28 NOV 2024 to 26 DEC 2024