

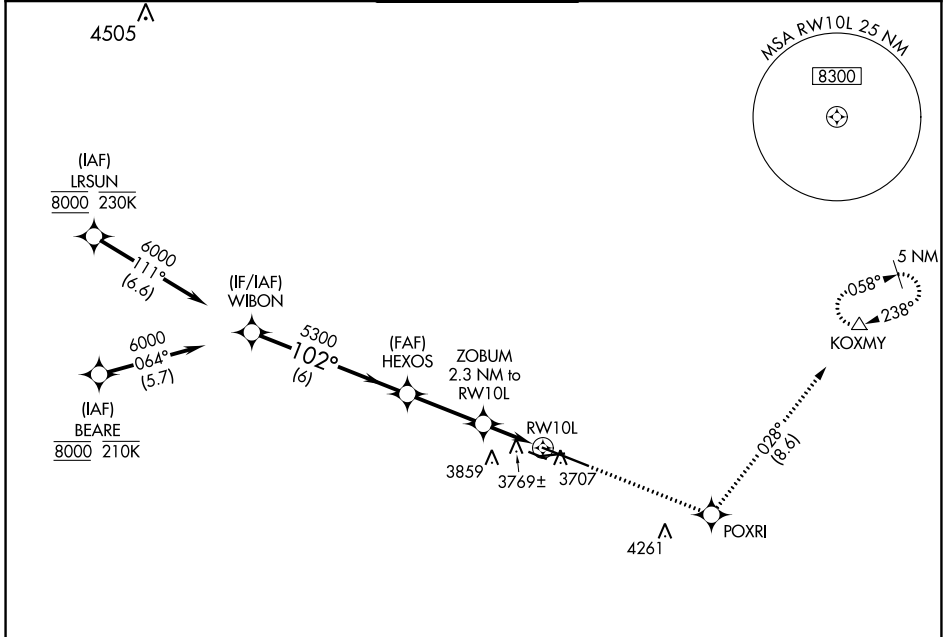
WAAS CH 50122 W10A	APP CRS 102°	Rwy Idg TDZE 3585 Apt Elev 3662
--	------------------------	---

RNAV (GPS) RWY 10L

BILLINGS LOGAN INTL (BIL)

RNP APCH - GPS	MALSR	MISSED APPROACH: Climb to 6000 direct POXRI and on track 028° to KOXMY and hold.
<p>V For uncompensated Baro-VNAV systems, LNAV/VNAV NA below -24°C or above 50°C. #RVR 1800 authorized with use of FD or AP or HUD to DA.</p>		

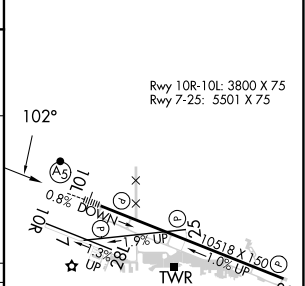
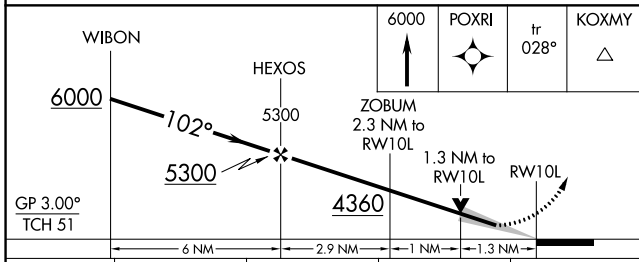
ATIS 126.3	BILLINGS APP CON 120.5 284.6	BILLINGS TOWER 127.2 257.8	GND CON 121.9	CLNC DEL 121.9
----------------------	--	--------------------------------------	-------------------------	--------------------------



NW-1, 28 NOV 2024 to 26 DEC 2024

NW-1, 28 NOV 2024 to 26 DEC 2024

ELEV 3662	D TDZE 3585
-----------	--------------------



CATEGORY	A	B	C	D
LPV DA#	3785/24		200 (200-½)	
LNAV/VNAV DA	4041/45		456 (400-¾)	
LNAV MDA	4020/24	435 (400-½)	4020/40	435 (400-¾)
C CIRCLING	4160-1	498 (500-1)	4180-1½ 518 (600-1½)	4580-3 918 (1000-3)

REIL Rwy 25 and 28R
HIRL Rwy 10L-28R
MIRL Rwy 7-25 and 10R-28L