

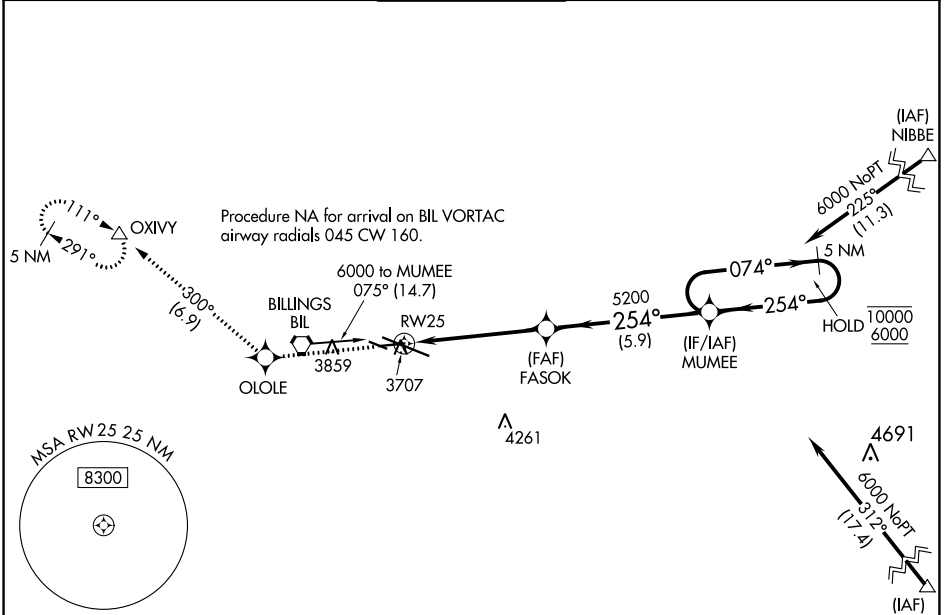
WAAS CH <b>78028</b> <b>W25A</b>	APP CRS <b>254°</b>	Rwy Idg TDZE Apt Elev	<b>5501</b> <b>3586</b> <b>3662</b>
--	------------------------	-----------------------------	---

# RNAV (GPS) RWY 25

BILLINGS LOGAN INTL (BIL)

RNP APCH - GPS.	MISSED APPROACH: Climb to 6000 direct OLOLE and on track 300° to OXIVY and hold.
<p>▼ For uncompensated Baro-VNAV systems, LNAV/VNAV NA below -25°C or above 54°C.</p> <p>▲</p>	

ATIS <b>126.3</b>	BILLINGS APP CON <b>120.5 284.6</b>	BILLINGS TOWER <b>127.2 257.8</b>	GND CON <b>121.9</b>	CLNC DEL <b>121.9</b>
----------------------	--	--------------------------------------	-------------------------	--------------------------



NW-1, 28 NOV 2024 to 26 DEC 2024

NW-1, 28 NOV 2024 to 26 DEC 2024

ELEV 3662	<b>D</b>	TDZE 3586
-----------	----------	-----------

