

BILOXI, MISSISSIPPI

TACAN-B

VORTAC GPT 109.0 Chan 27	APCH CRS 266°	Rwy ldg TDZE Arpt Elev N/A 33
--	-------------------------	--

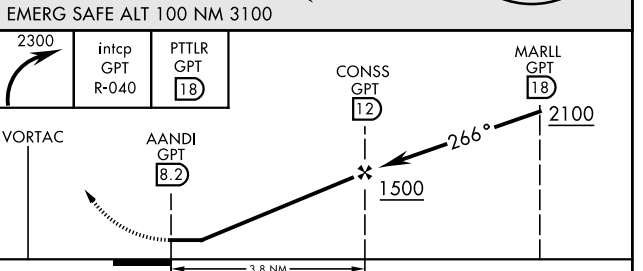
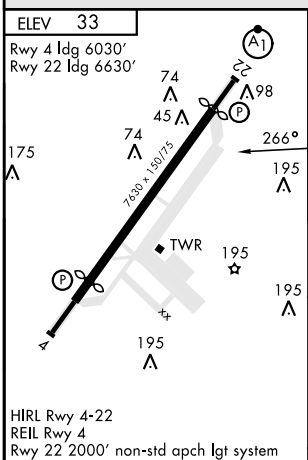
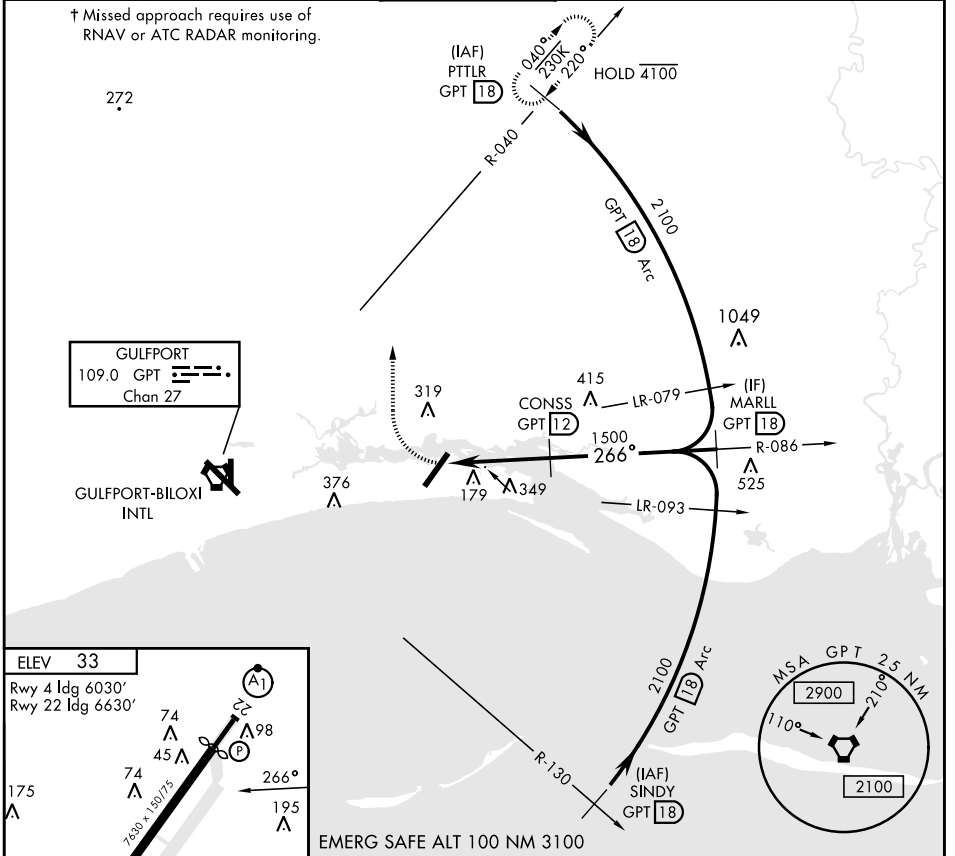
AL-49 [USAF]

KEESLER AFB (KBIX)

† MISSED APPROACH: Climbing right turn to 2300 inctd GPT VORTAC R-040 to PTTLR (R-040/18 DME) and hold.

ATIS 281.55	GULFPORT APP CON 124.6 354.1 (130°- 309°) 127.5 254.25 (310°- 129°)	TOWER ★ 120.75 269.075	GND CON 121.8 275.8	CLNC DEL 121.8 275.8
-----------------------	---	----------------------------------	-------------------------------	--------------------------------

† Missed approach requires use of RNAV or ATC RADAR monitoring.



FAF to MAP 3.8 NM								
Knots	60	90	120	150	180			
Min:Sec	3:48	2:32	1:54	1:31	1:16			
CATEGORY	A		B		C		D	
CIRCLING	620-1		660-1		680-1¾		680-2	
	587 (600-1)		627 (700-1)		647 (700-1¾)		647 (700-2)	

BILOXI, MISSISSIPPI

30° 25' N-88° 55' W

KEESLER AFB (KBIX)

Amdt 3 03NOV22

TACAN-B

SC-4, 28 NOV 2024 to 26 DEC 2024

SC-4, 28 NOV 2024 to 26 DEC 2024