

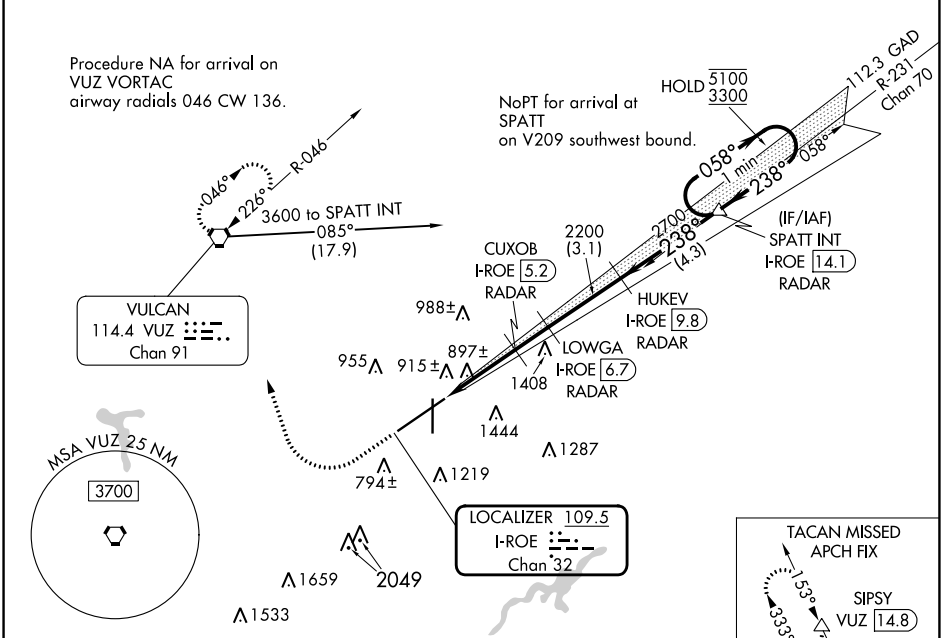
LOC/DME I-ROE 109.5 Chan 32	APP CRS 238°	Rwy Idg 10801 TDZE 641 Apt Elev 650
---	------------------------	--

ILS or LOC RWY 24

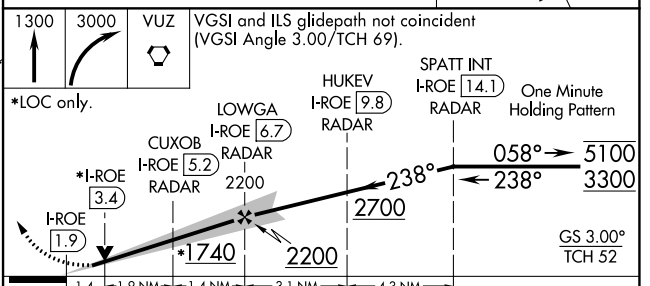
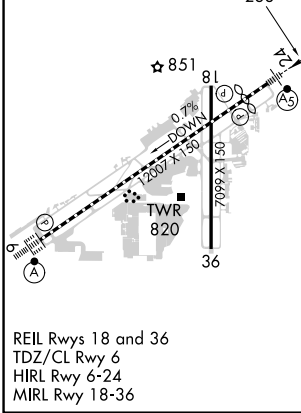
BIRMINGHAM-SHUTTLESWORTH INTL (BHM)

DME or RADAR required.	MALSR 	MISSED APPROACH: Climb to 1300 then climbing right turn to 3000 direct VUZ VORTAC and hold. (TACAN aircraft continue on VUZ VORTAC R-333 to SIPSY/VUZ 14.8 DME and hold NW, right turn, 153° inbound).
<p>▼ Rwy 24 helicopter visibility reduction below RVR 4000 NA. For inop ALS, increase S-ILS 24 Cat E visibility to RVR 4000 and increase S-LOC 24 Cat A/B visibility to RVR 5500, and Cat C/D/E to 1 3/8 SM. **RVR 1800 authorized with use of FD or AP or HUD to DA.</p>		

ATIS 119.4 270.1	BIRMINGHAM APP CON 123.8 256.8	BIRMINGHAM TOWER 119.9 317.725	GND CON 121.7 348.6	CLNC DEL 125.675 305.2
----------------------------	--	--	-------------------------------	----------------------------------



ELEV 650	D	TDZE 641
-----------------	----------	-----------------



CATEGORY	A	B	C	D	E
S-ILS 24**	841/24 200 (200-1/2)				
S-LOC 24	1160/40	519 (600-3/4)	1160/55	519 (600-1)	

SE-4, 28 NOV 2024 to 26 DEC 2024

SE-4, 28 NOV 2024 to 26 DEC 2024