

LOC I-BHM 110.3	APP CRS 058°	Rwy ldg 12007 TDZE 606 Apt Elev 650
---------------------------	------------------------	--

ILS or LOC RWY 6

BIRMINGHAM-SHUTTLESWORTH INTL (BHM)

RNP APCH-GPS. From OKW VORTAC.

For inop ALS, increase S-ILS 6 Cat E visibility to RVR 4000 and S-LOC 6 Cat C, D, E visibility to 1 1/2 SM. Cat E procedure turn NA.

ALSF-2



MISSED APPROACH: Climb to 2000 then climbing left turn to 3000 direct VUZ VORTAC and hold.

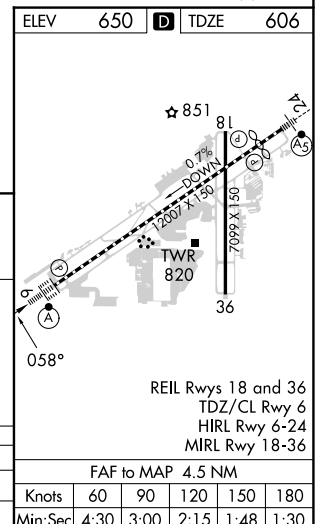
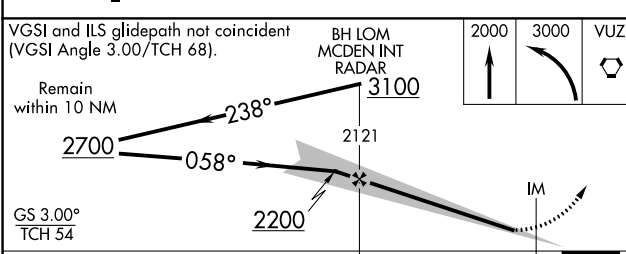
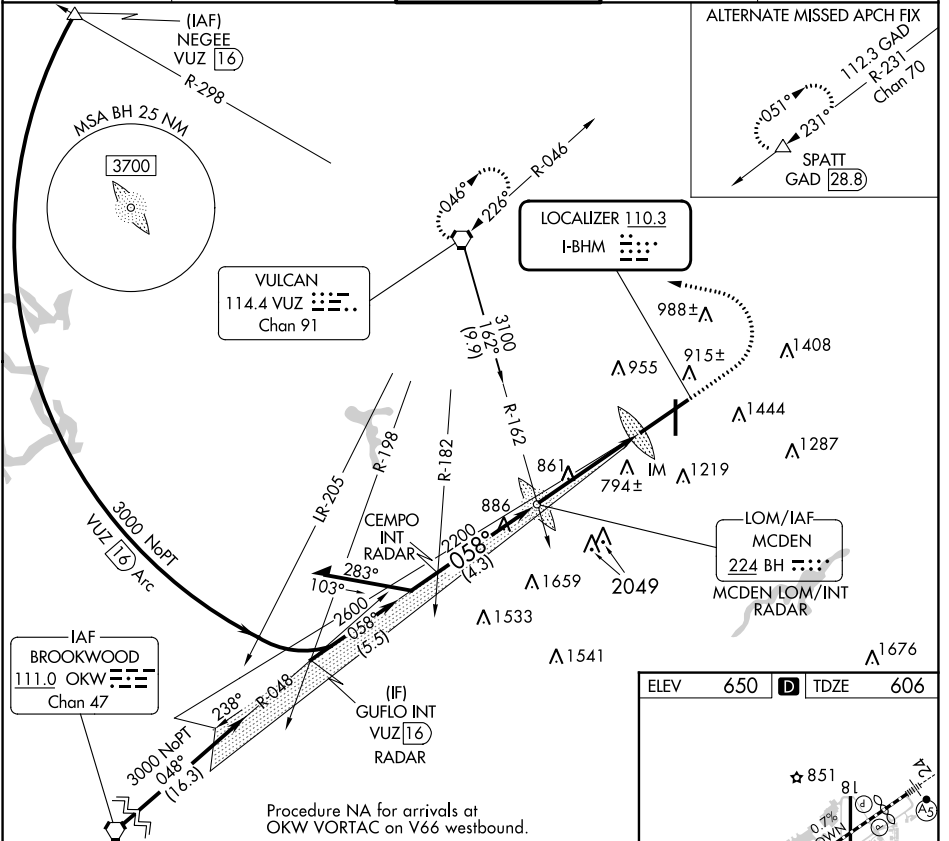
ATIS
119.4 270.1

BIRMINGHAM APP CON
123.8 256.8

BIRMINGHAM TOWER
119.9 317.725

GND CON
121.7 348.6

CLNC DEL
125.675 305.2



CATEGORY	A	B	C	D	E
S-ILS 6	806/18		200 (200-1/2)		
S-LOC 6	1160/24	554 (600-1/2)	1160/60	554 (600-1 1/4)	

FAF to MAP 4.5 NM					
Knots	60	90	120	150	180
Min:Sec	4:30	3:00	2:15	1:48	1:30

ILS or LOC RWY 6

SE-4, 28 NOV 2024 to 26 DEC 2024

SE-4, 28 NOV 2024 to 26 DEC 2024