

APP CRS **058°**
 Rwy ldg **12007**
 TDZE **606**
 Apt Elev **650**

RNAV (RNP) Z RWY 6

BIRMINGHAM-SHUTTLESWORTH INTL (BHM)

RNP AR APCH. RF required.

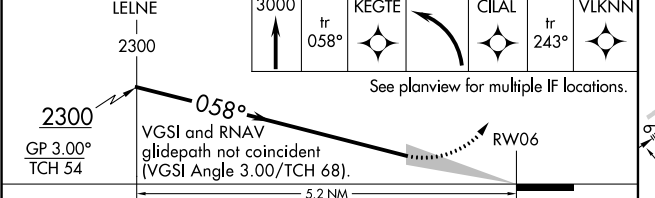
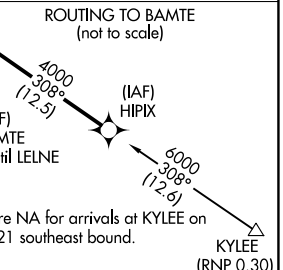
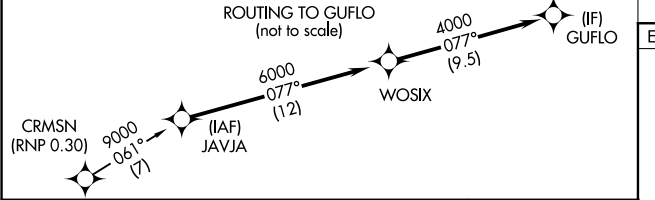
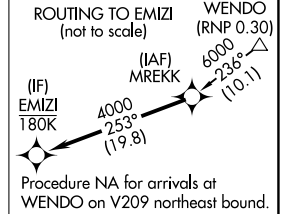
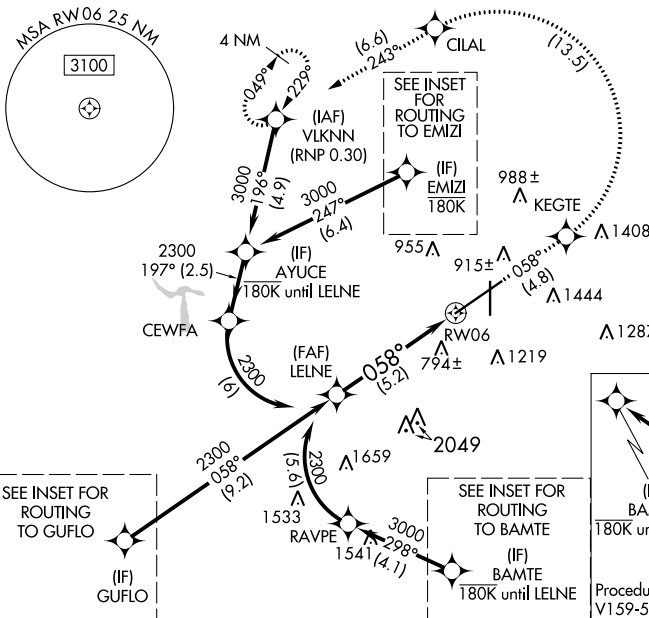
ALSF-2

▼ For uncompensated Baro-VNAV systems, procedure NA below -8°C or above 54°C.

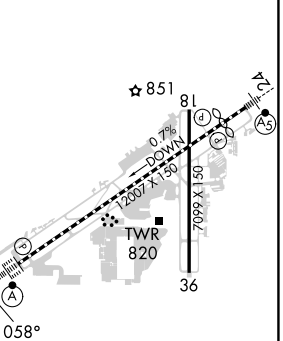


MISSED APPROACH: Climb to 3000 on track 058° to KEGTE left turn to CILAL and track 243° to VLKNN and hold.

ATIS 119.4 270.1	BIRMINGHAM APP CON 123.8 256.8	BIRMINGHAM TOWER 119.9 317.725	GND CON 121.7 348.6	CLNC DEL 125.675 305.2
----------------------------	--	--	-------------------------------	----------------------------------



ELEV 650 TDZE 606



CATEGORY	A	B	C	D
RNP 0.30 DA		1138/55	532 (500-1)	

AUTHORIZATION REQUIRED

REIL Rwy 18 and 36
 TDZ/CL Rwy 6
 HIRL Rwy 6-24
 MIRL Rwy 18-36

SE-4, 28 NOV 2024 to 26 DEC 2024

SE-4, 28 NOV 2024 to 26 DEC 2024